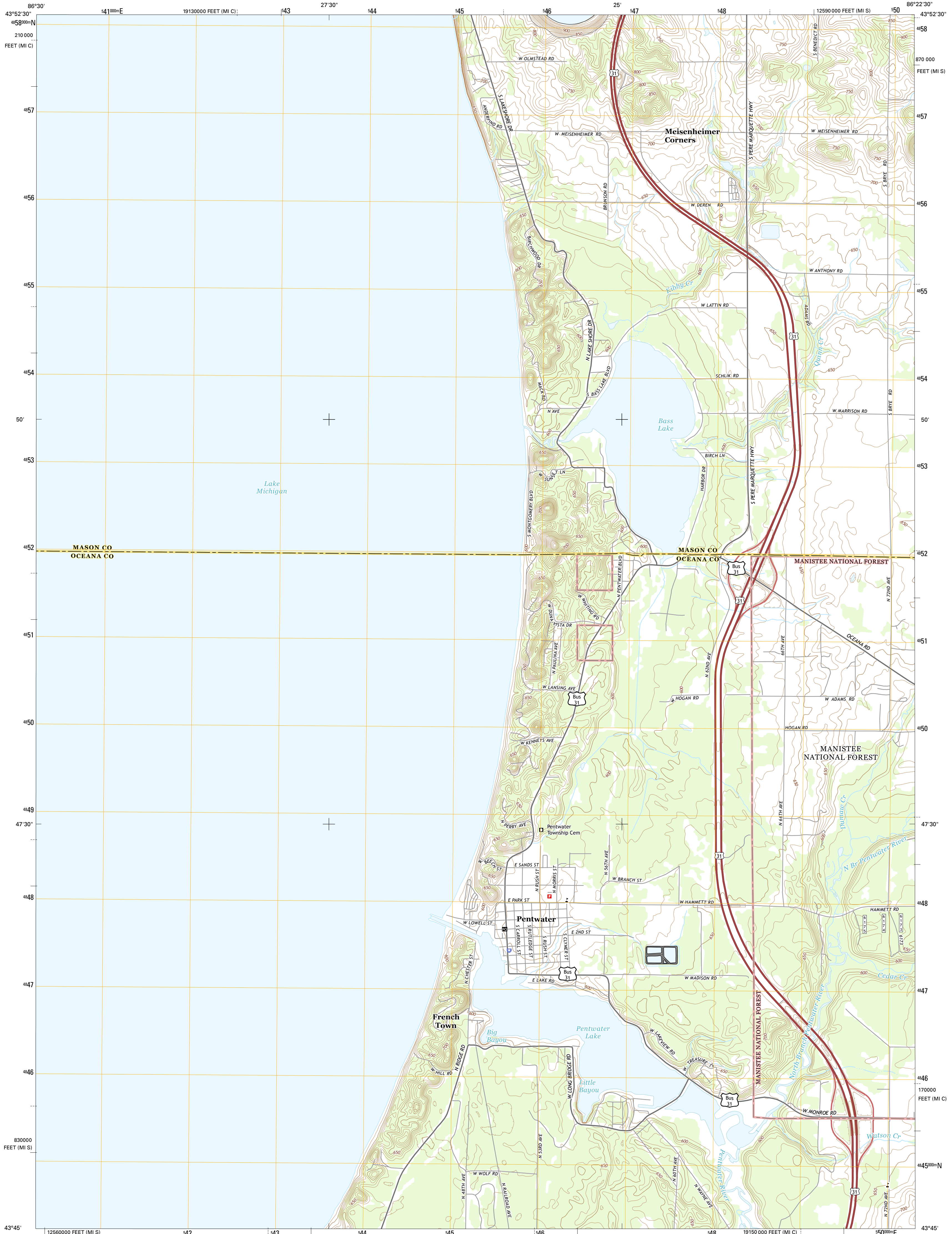




U.S. DEPARTMENT OF THE INTERIOR
U.S. GEOLOGICAL SURVEY



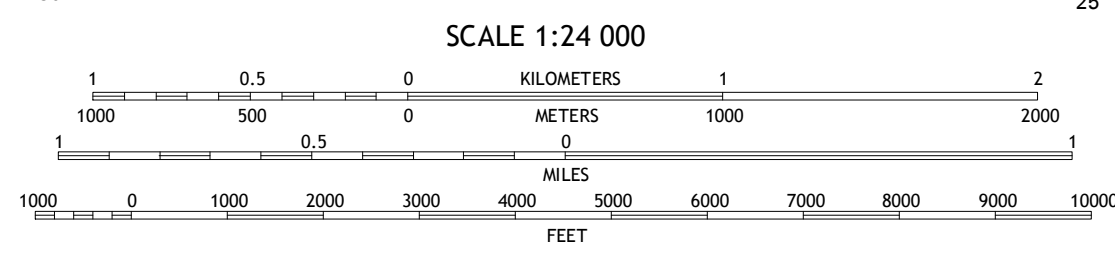
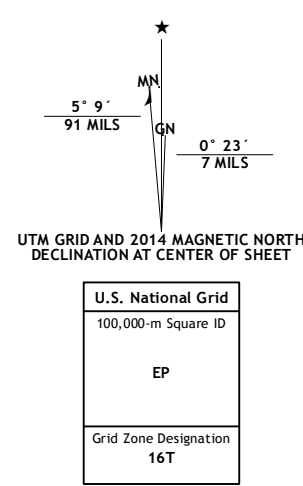
PENTWATER QUADRANGLE
MICHIGAN
7.5-MINUTE SERIES



Produced by the United States Geological Survey
North American Datum of 1983 (NAD83)
World Geodetic System of 1984 (WGS84). Projection and
1000-meter grid: Universal Transverse Mercator, Zone 16T
10 000-foot ticks: Michigan Coordinate System of 1983 (south
and central zones)

This map is not a legal document. Boundaries may be
generalized for this map scale. Private lands within government
reservations may not be shown. Obtain permission before
entering private lands.

Imagery: N.A.I.P., June 2012 - July 2012
Roads: HERE, ©2013
Roads within US Forest Service Lands: FSTopo Data
with limited Forest Service updates, 2013
Names: ©2013
Hydrography: National Hydrography Dataset, 2012
Contours: National Elevation Dataset, 2006
Boundaries: Multiple sources; see metadata file 1972 - 2013
Public Land Survey System: BLM, 2011



QUADRANGLE LOCATION

CONTOUR INTERVAL 10 FEET
NORTH AMERICAN VERTICAL DATUM OF 1988

This map was produced to conform with the
National Geospatial Program US Topo Product Standard, 2011.
A metadata file associated with this product is draft version 0.6.16

1	2	3	1 Ludington
			3 Scottville
4	5	6	5 Wiley
			6 Little Point Sable
6	7	8	7 Menards
			8 Hart

ADJOINING QUADRANGLES

ROAD CLASSIFICATION

Expressway	Local Connector	State Route
Secondary Hwy	Local Road	FS Primary Route
Ramp	4WD	FS Passenger Route
Interstate Route	US Route	FS High Clearance Route

Check with local Forest Service unit
for current travel conditions and restrictions.

PENTWATER, MI
2014

