

(Peacock NW) 85° 52' 30" 44° 07' 30"

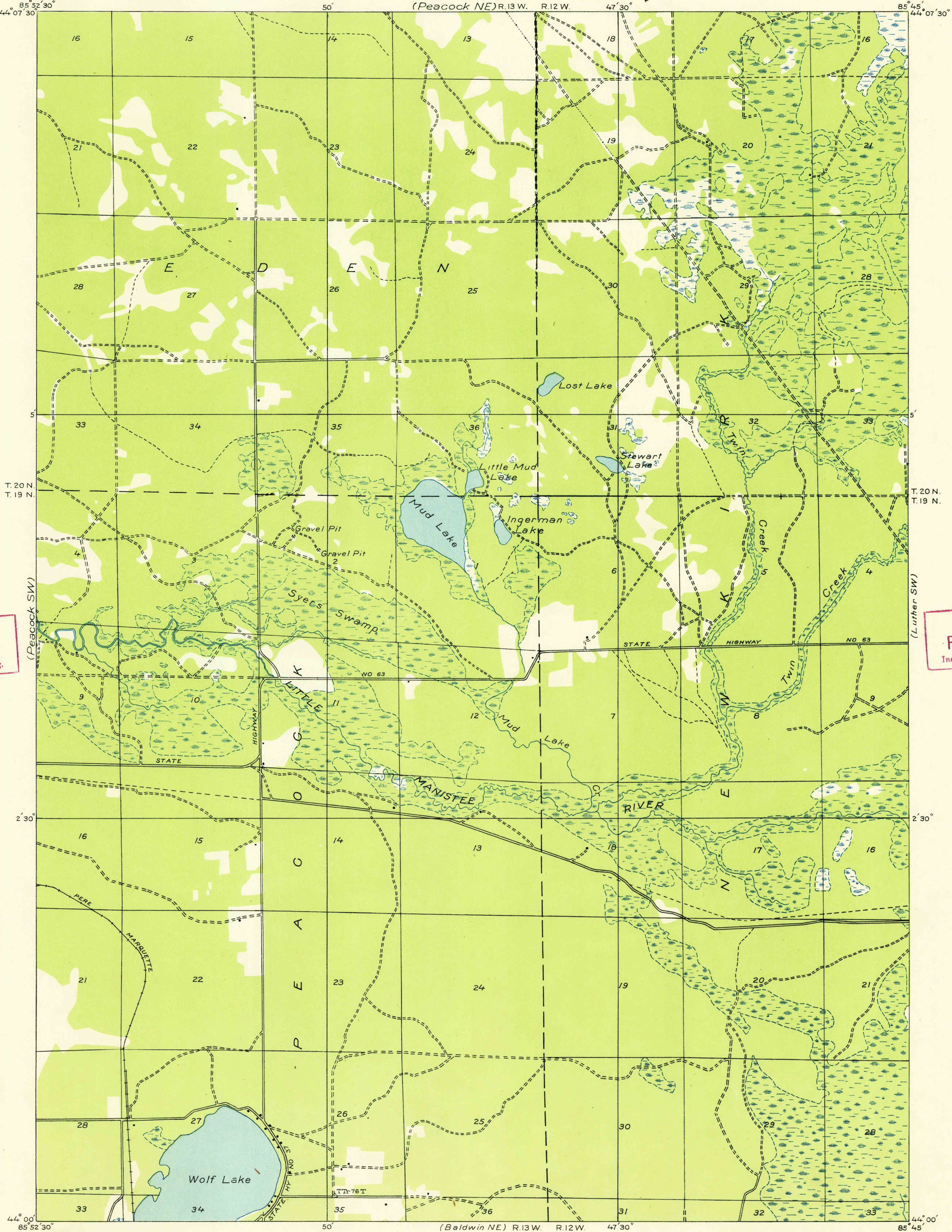
DEPARTMENT OF THE INTERIOR
U. S. GEOLOGICAL SURVEY

STATE OF MICHIGAN
DEPARTMENT OF CONSERVATION
GEO. R. HOGARTH, DIRECTOR
GEOLOGICAL SURVEY DIVISION, R. A. SMITH, STATE GEOLOGIST
(Peacock NE) R. 13 W. R. 12 W. 47' 30"

Advance sheet
Subject to correction

MICHIGAN
(LAKE COUNTY)
PEACOCK QUADRANGLE
(SE QUARTER)

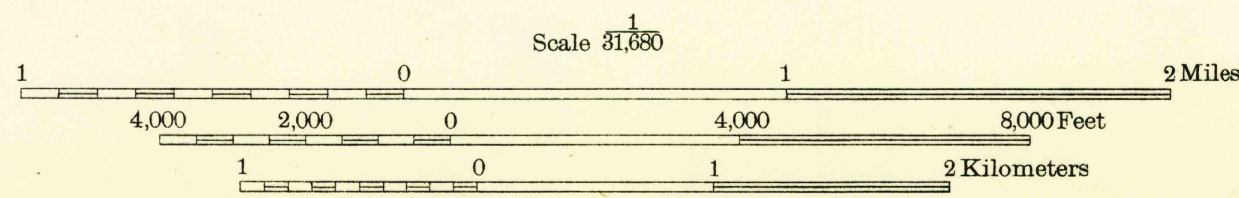
(Luther NW) 85° 45' 44° 07' 30"



U. S. G. S.
FILE COPY
Inspection and Editing.

U. S. G. S.
FILE COPY
Inspection and Editing.

Glenn S. Smith, Division Engineer
Compiled by U. S. Geological Survey after field examination
of aerial photographs taken by Air Corps, U. S. Army
Control by U. S. Geological Survey
Field examination in 1931 and 1933



Polygonic projection. North American datum

TRUE NORTH
MAGNETIC NORTH

U. S. G. S.
Historical
Topographic
Division
Inspection and Editing

APPROXIMATE MEAN DECLINATION, 1933
PEACOCK, MICH (SE)

APR 12 1948

575