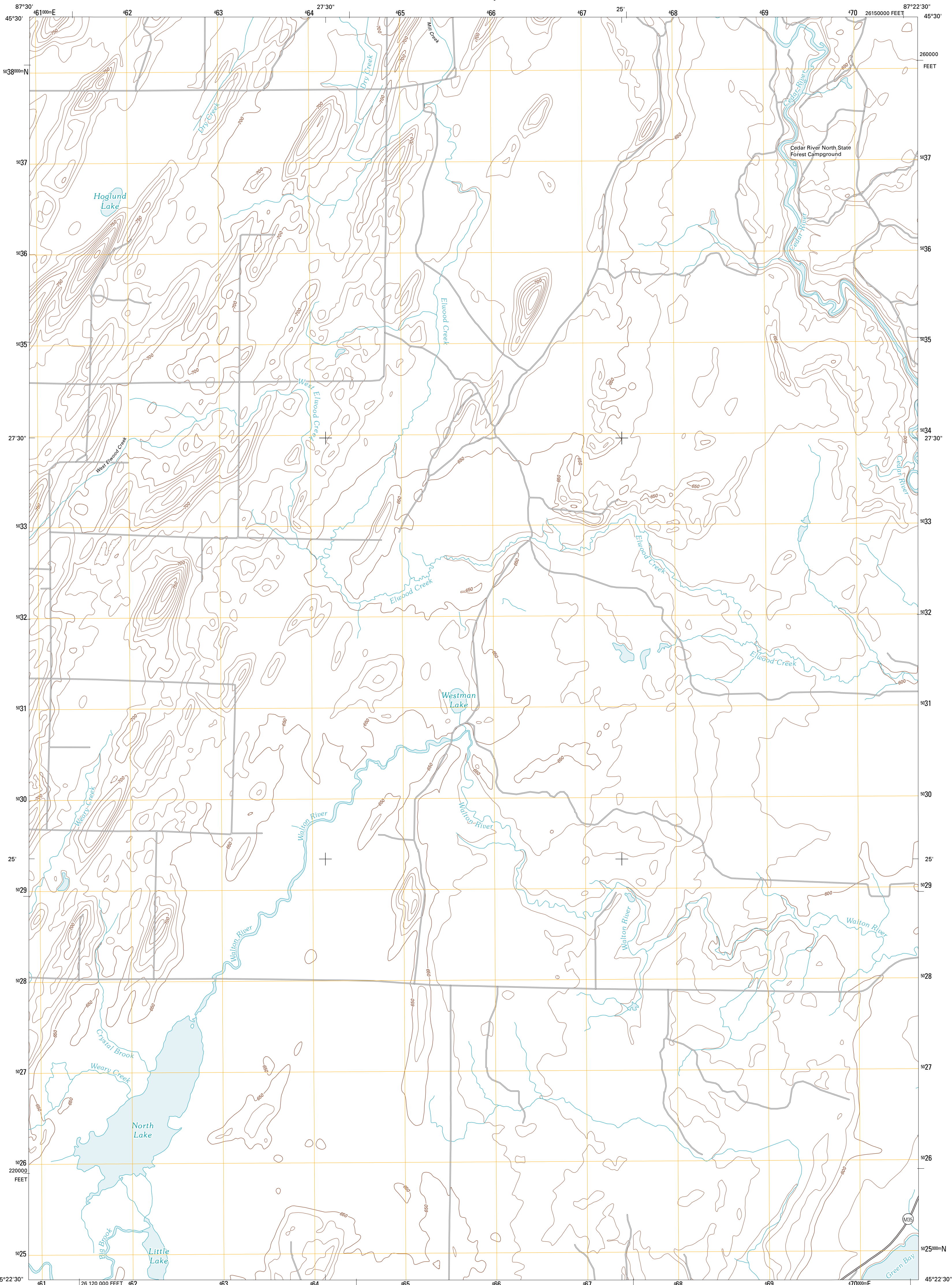




U.S. DEPARTMENT OF THE INTERIOR  
U. S. GEOLOGICAL SURVEY

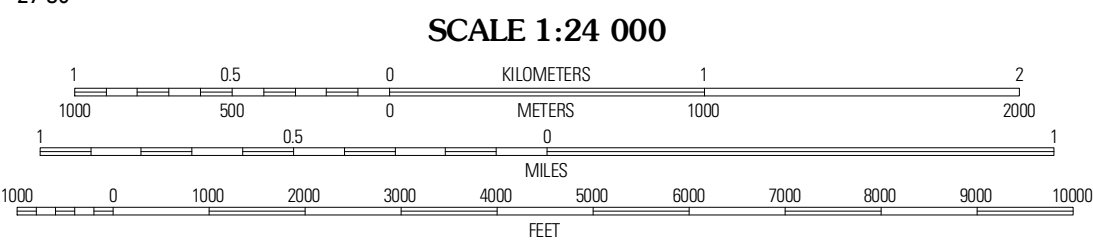
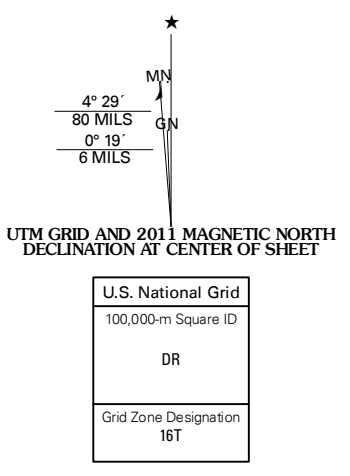


NORTH LAKE QUADRANGLE  
MICHIGAN-MENOMINEE CO.  
7.5-MINUTE SERIES



Produced by the United States Geological Survey  
North American Datum of 1983 (NAD83)  
World Geodetic System of 1984 (WGS84). Projection and  
1 000-meter grid: Universal Transverse Mercator, Zone 16T  
10 000-foot ticks: Michigan Coordinate System of 1983  
(north zone)

Imagery.....NAP, July 2009  
Roads.....©2006-2010 Tele Atlas  
Names.....GNS, 2010  
Hydrography.....National Hydrography Dataset, 2009  
Contours.....National Elevation Dataset, 1998  
Boundaries.....Census, IBWC, IBC, USGS, 1972 - 2010



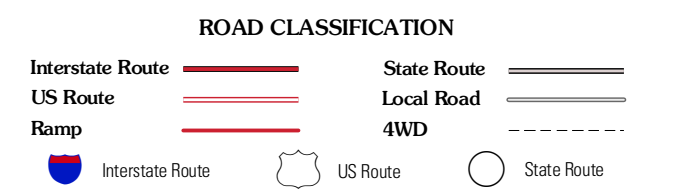
CONTOUR INTERVAL 10 FEET  
NORTH AMERICAN VERTICAL DATUM OF 1988  
This map was produced to conform with version 0.5.10  
of the USGS US Topo Product Standard.  
A metadata file associated with this product is draft version 0.5.16



QUADRANGLE LOCATION

Nideau	Gourley	Saugull Point
Stephenson	North Lake	Cedar River
Wallace	Arthur Bay	

ADJOINING 7.5' QUADRANGLES



NORTH LAKE, MI  
2011