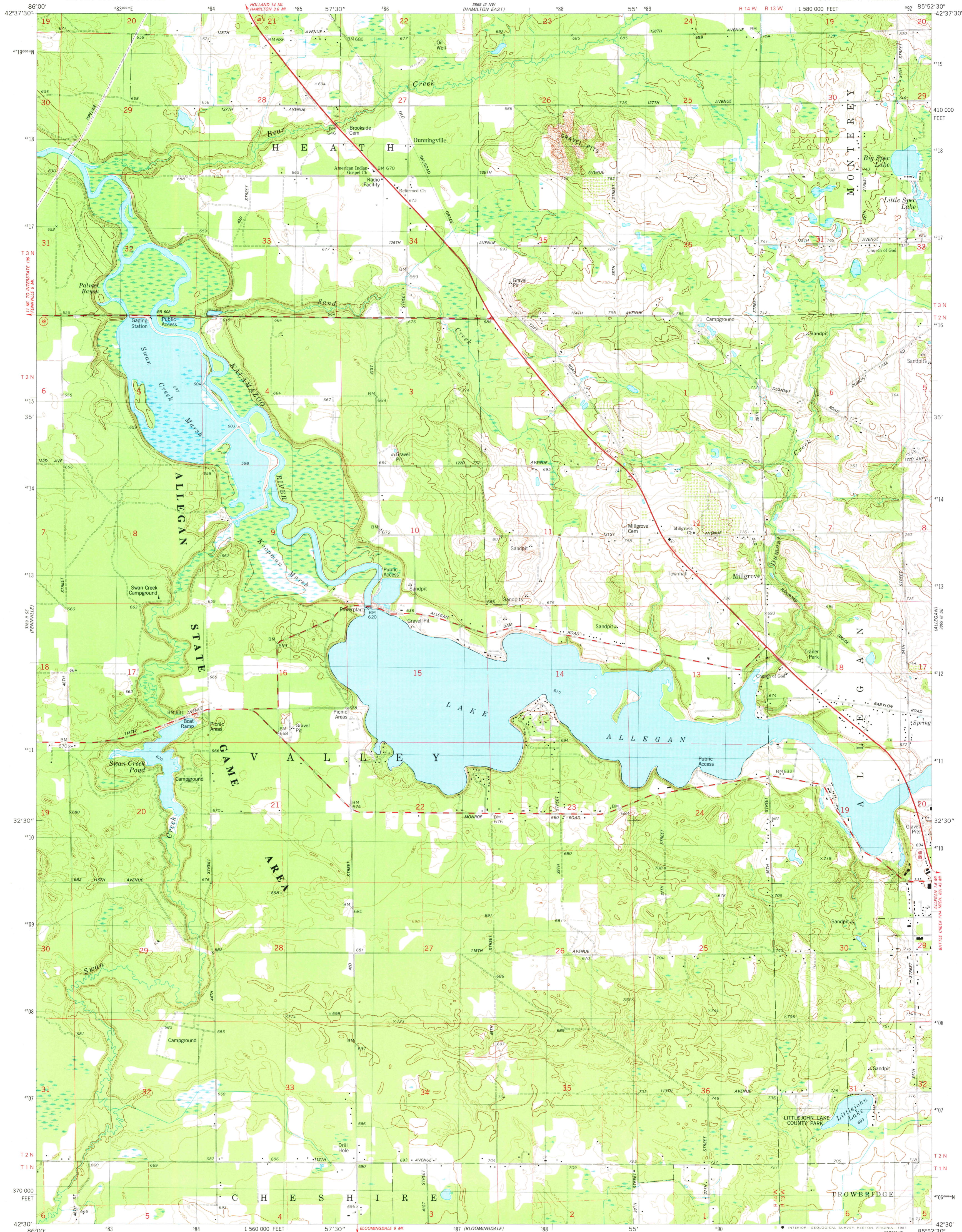
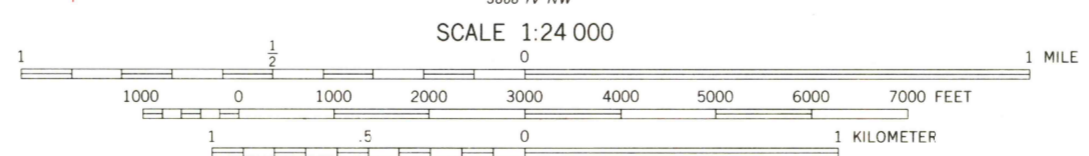
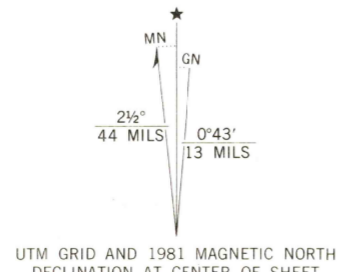


UNITED STATES  
DEPARTMENT OF THE INTERIOR  
GEOLOGICAL SURVEY

MILLGROVE QUADRANGLE  
MICHIGAN-ALLEGAN CO.  
7.5 MINUTE SERIES (TOPOGRAPHIC)  
SW 4 ALLEGAN 15' QUADRANGLE



Mapped, edited, and published by the Geological Survey  
Control by USGS and NOS/NOAA  
Topography by photogrammetric methods from aerial photographs taken 1976. Field checked 1978. Map edited 1981  
Projection and 10,000-foot grid ticks: Michigan coordinate system, south zone (Lambert conformal conic)  
1000-meter Universal Transverse Mercator grid, zone 16 1927 North American Datum  
To place on the predicted North American Datum 1983 move the projection lines 1 meter north and 2 meters east as shown by dashed corner ticks  
There may be private inholdings within the boundaries of the National or State reservations shown on this map  
Fine red dashed lines indicate selected fence and field lines where generally visible on aerial photographs. This information is unchecked



CONTOUR INTERVAL 10 FEET  
DOTTED LINES REPRESENT 5-FOOT CONTOURS  
NATIONAL GEODETIC VERTICAL DATUM OF 1929  
THIS MAP COMPLIES WITH NATIONAL MAP ACCURACY STANDARDS  
FOR SALE BY U. S. GEOLOGICAL SURVEY, RESTON, VIRGINIA 22092  
AND BY THE GEOLOGICAL SURVEY DIVISION  
MICHIGAN DEPARTMENT OF NATURAL RESOURCES, LANSING, MICHIGAN 48909  
A FOLDER DESCRIBING TOPOGRAPHIC MAPS AND SYMBOLS IS AVAILABLE ON REQUEST



ROAD CLASSIFICATION

Primary highway, hard surface	Light duty road, hard or improved surface
Secondary highway, hard surface	Unimproved road
Interstate Route	U. S. Route
	State Route

MILLGROVE, MICH.  
SW 4 ALLEGAN 15' QUADRANGLE  
N4230-W8552.5/7.5  
1981  
DMA 3869 III SW-SERIES V862

DL-100  
1981