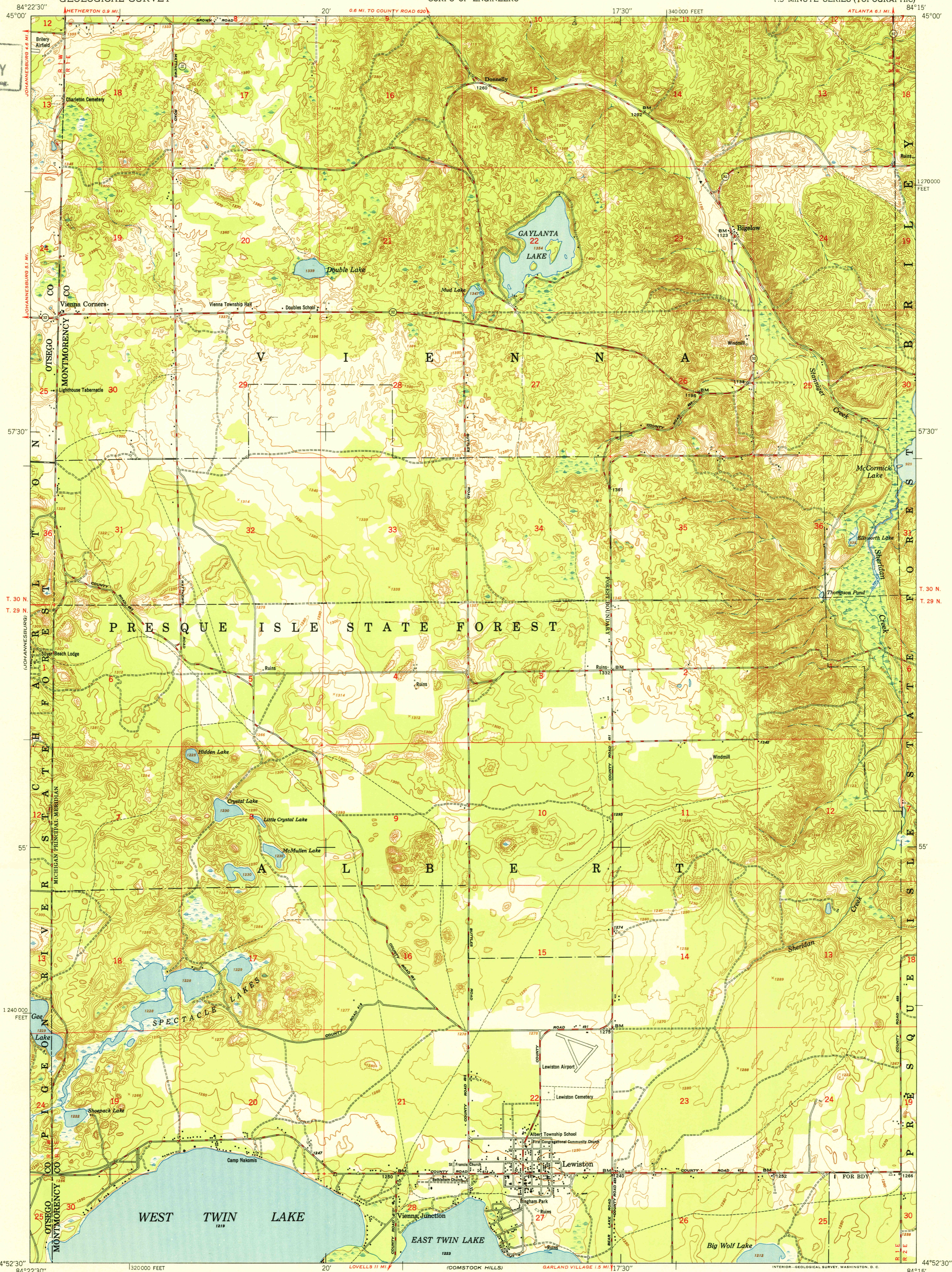
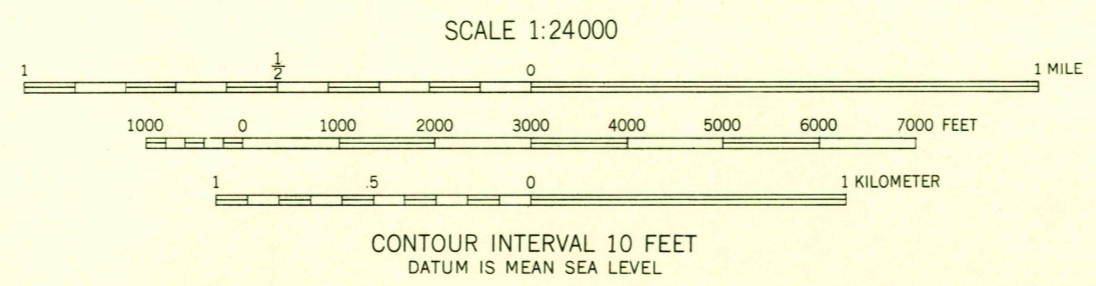


U.S.G.S.
FILE COPY
Inspection and Printing



Map by the Army Map Service
Published for civil use by the Geological Survey
Control by US&GS, USGS, and CE
Topography from aerial photographs by multiplex methods
Aerial photographs taken 1949. Field check 1950
Polyconic projection. 1927 North American datum
10,000-foot grid based on Michigan coordinates system
east zone
Unchecked elevations are shown in brown

TRUE NORTH
MAGNETIC NORTH
APPROXIMATE MEAN
DECLINATION, 1950



USGS
Historical File
Topographic Division

ROAD CLASSIFICATION

HARD-SURFACE ALL WEATHER ROADS	DRY WEATHER ROADS
heavy-duty ———+ LANE IS LANE	Improved dirt ———+ LANE IS LANE
Medium-duty ———+ LANE IS LANE	Unimproved dirt ———+ LANE IS LANE
Loose-surface, graded, or narrow hard-surface - - -	
U. S. Route	State Route

THIS MAP COMPLIES WITH NATIONAL MAP ACCURACY STANDARDS
FOR SALE BY U. S. GEOLOGICAL SURVEY, WASHINGTON 25, D. C.
A FOLDER DESCRIBING TOPOGRAPHIC MAPS AND SYMBOLS IS AVAILABLE ON REQUEST

U.S.G.S.
FILE COPY
Inspection and Printing

LEWISTON, MICH.
N4452.5-W8415/7.5
EDITION OF 1951