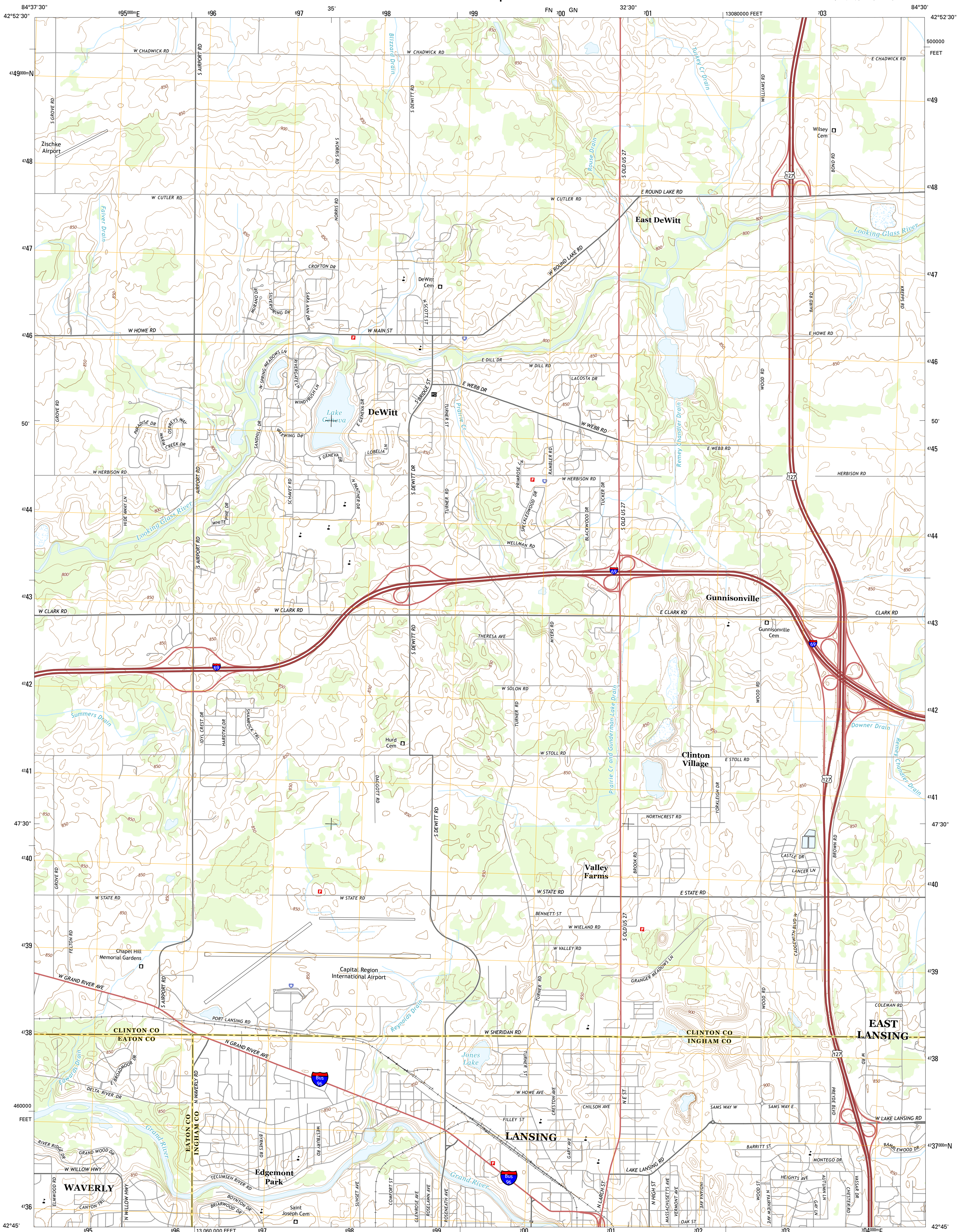




U.S. DEPARTMENT OF THE INTERIOR
U.S. GEOLOGICAL SURVEY



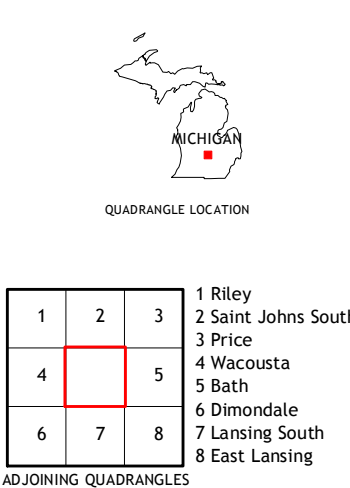
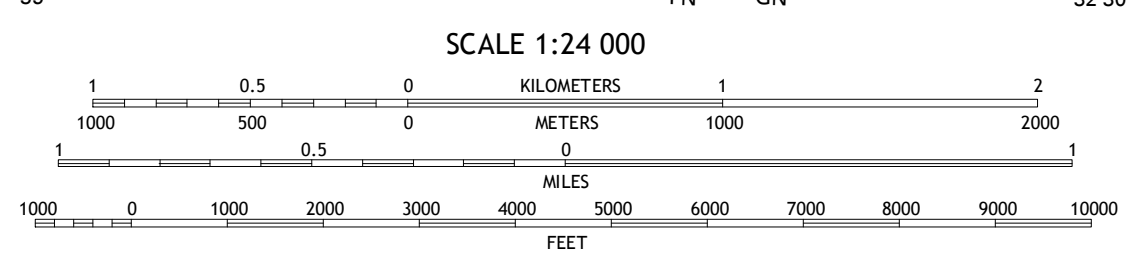
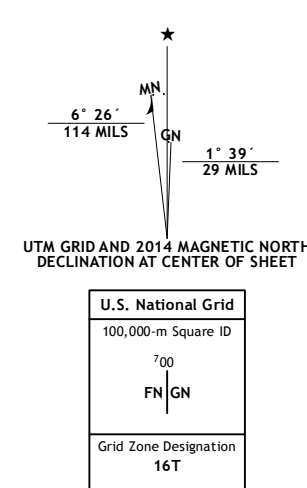
LANSING NORTH QUADRANGLE
MICHIGAN
7.5-MINUTE SERIES



Produced by the United States Geological Survey
North American Datum of 1983 (NAD83)
World Geodetic System of 1984 (WGS84). Projection and
1 000-meter grid: Universal Transverse Mercator, Zone 16T
10 000-foot ticks: Michigan Coordinate System of 1983 (south
zone)

This map is not a legal document. Boundaries may be
generalized for this map scale. Private lands within government
reservations may not be shown. Obtain permission before
entering private lands.

Imagery: NAIP, June 2012
Roads: HERE, ©2013
Names: GNIS, 2013
Hydrography: National Hydrography Dataset, 2012
Contours: National Elevation Dataset, 2007
Boundaries: Multiple sources; see metadata file 1972-2013
Public Land Survey System: BLM, 2011



ROAD CLASSIFICATION

Expressway	Local Connector
Secondary Hwy	Local Road
Ramp	4WD
Interstate Route	US Route
	State Route

1	2	3
4	5	6
7	8	

ADJOINING QUADRANGLES

1 Riley
2 Saint Johns South
3 Price
4 Wicousta
5 Bath
6 Dimondale
7 Lansing South
8 East Lansing

LANSING NORTH, MI
2014

