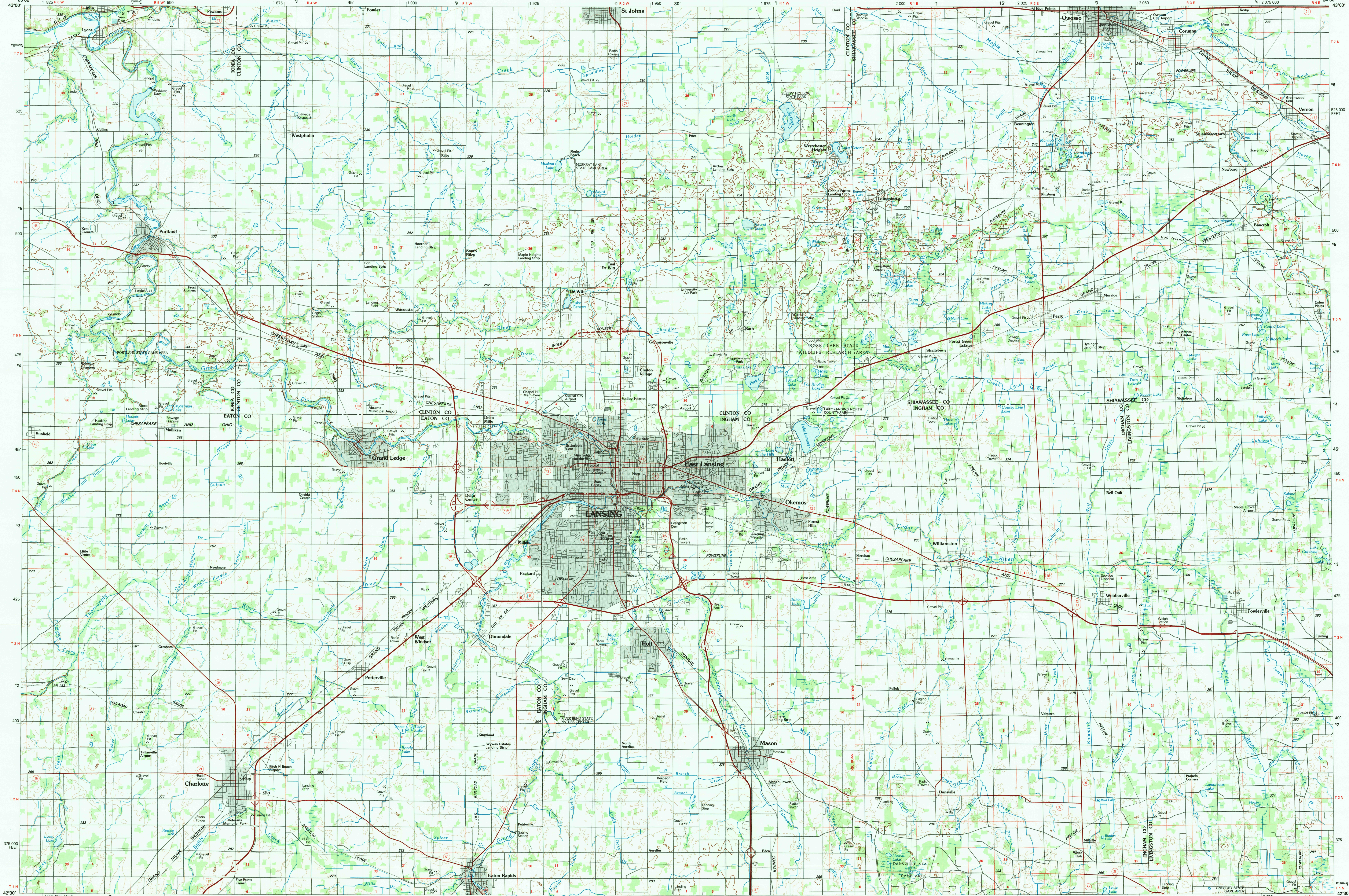


LANSING, MICHIGAN

30 X 60 MINUTE SERIES (TOPOGRAPHIC)



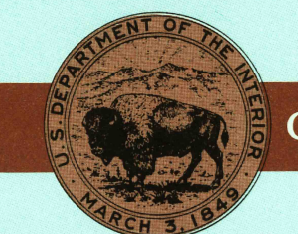
# Lansing MICHIGAN

1:100 000-scale metric topographic map



30 X 60 MINUTE QUADRANGLE SHOWING

- Contours and elevations in meters
- Highways, roads and other manmade structures
- Water features
- Woodland areas
- Geographic names



GEOLOGICAL SURVEY

1983

Produced by the United States Geological Survey  
 Compiled from USGS 1:24 000-scale topographic maps dated 1965-1980. Planimetry revised from aerial photographs taken 1981 and other source data. Revised information not field checked. Map edited 1983.  
 Projection and 10 000-meter grid, zone 16, Universal Transverse Mercator  
 25 000-foot grid ticks based on Michigan coordinate system, south zone  
 1927 North American Datum  
 To place on the predicted North American Datum 1983, move the projection lines 1 meter north and 3 meters west  
 There may be private inholdings within the boundaries of the National or State reservations shown on this map

CONTOUR INTERVAL 10 METERS  
 NATIONAL GEODETIC VERTICAL DATUM OF 1929  
 ELEVATIONS SHOWN TO THE NEAREST METER

THIS MAP COMPLIES WITH NATIONAL MAP ACCURACY STANDARDS

CONVERSION TABLE		DECLINATION DIAGRAM		ADJOINING MAPS		
Meters	Feet	MAGNETIC		1	2	3
1	3.2808	71° 15' N		4	5	
2	6.5617	71° 30' N		5	6	8
3	9.8425	71° 45' N		6	7	8
4	13.1234	72° 00' N		7	8	
5	16.4042	72° 15' N		8		
6	19.6850	72° 30' N				
7	22.9659	72° 45' N				
8	26.2467	73° 00' N				
9	29.5275	73° 15' N				
10	32.8084	73° 30' N				

To convert meters to feet multiply by 3.2808  
 To convert feet to meters multiply by 0.3048

UTM grid convergence (GM) and 100 magnetic declination (MD) at center of map. Diagram is approximate.

1 Cedar Springs  
 2 Alma  
 3 Flint  
 4 Grand Rapids  
 5 Pontiac  
 6 Kalamazoo  
 7 Jackson  
 8 Detroit

FOR SALE BY U.S. GEOLOGICAL SURVEY  
 RESTON, VIRGINIA 22092

## Topographic Map Symbols

- Primary highway, hard surface
- Secondary highway, hard surface
- Light duty road, principal street, hard or improved surface
- Other road or street; trail
- Route marker: Interstate, U.S. State
- Railroad: standard gage; narrow gage
- Bridge, overpass, underpass
- Tunnel: road; railroad
- Built up area; locality, elevation
- Airport; landing field; landing strip
- National boundary
- State boundary
- County boundary
- National or State reservation boundary
- Land grant boundary
- U.S. public lands survey: range, township, section
- Range, township, section line: protracted
- Power transmission line; pipeline
- Dam; dam with lock
- Cemetery; building
- Windmill; water well; spring
- Mine shaft; adit or cave; mine, quarry; gravel pit
- Campground; picnic area; U.S. location monument
- Ruins; cliff dwelling
- Distorted surface: strip mine, lava, sand
- Contours: index, intermediate, supplementary
- Bathymetric contours: index, intermediate
- Stream, lake: perennial, intermittent
- Rapids, large and small; falls, large and small
- Area to be submerged; marsh, swamp
- Land subject to controlled inundation; woodland
- Scrub, mangrove
- Orchard; vineyard

A pamphlet describing topographic maps is available on request

RETURN TO:  
 USGS NHD HISTORICAL MAP ARCHIVES