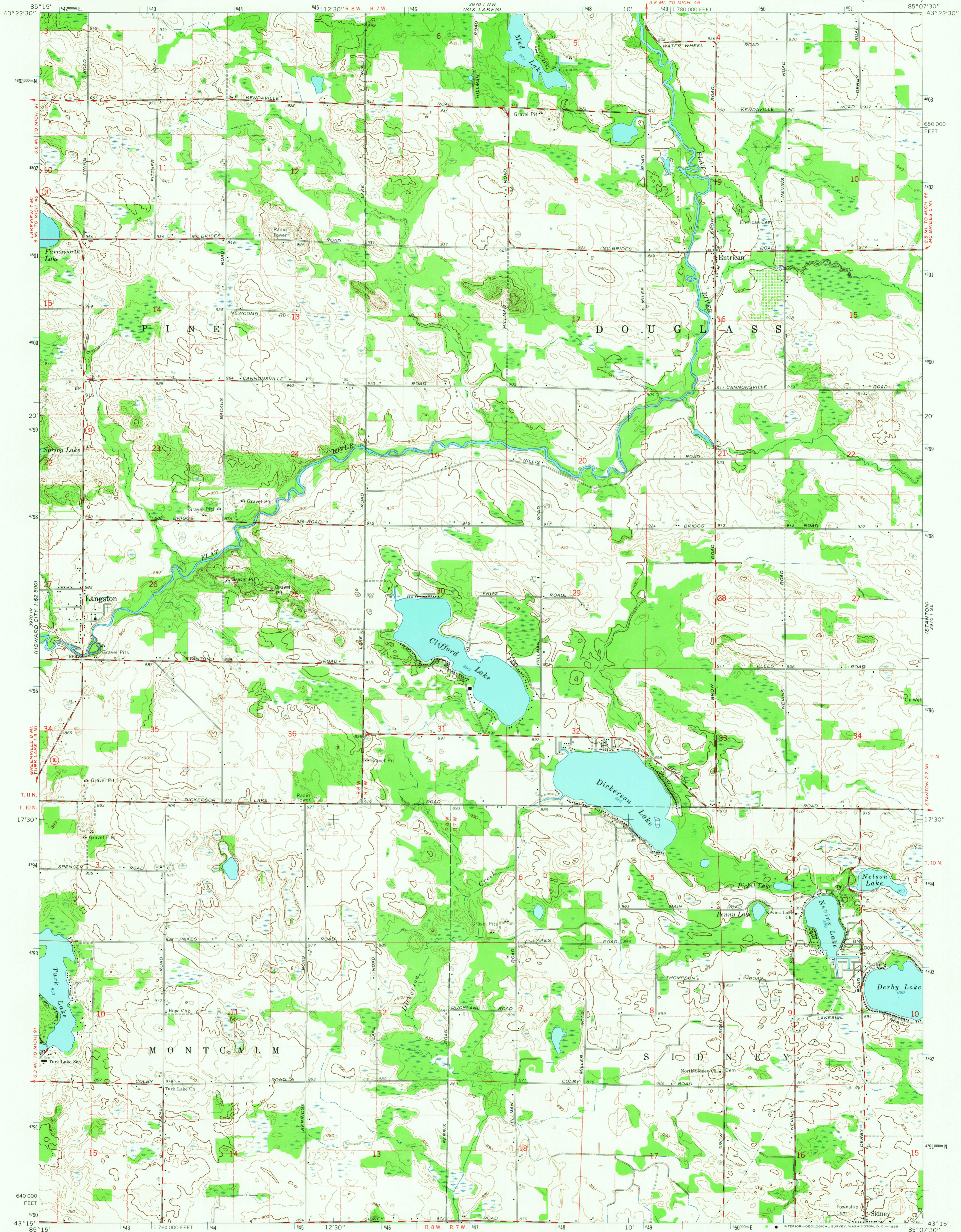
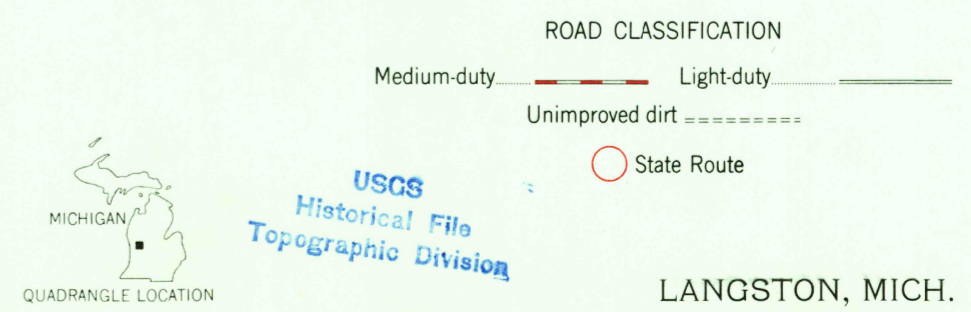
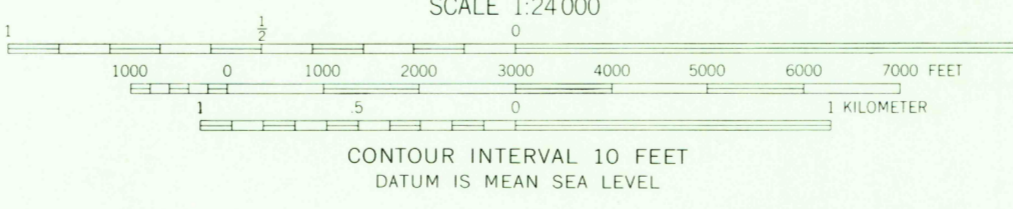
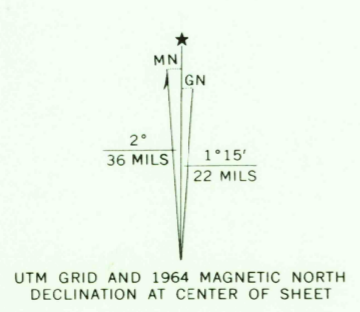


HOWARD CITY
1:25,000

STANTON
1:25,000



Maped, edited, and published by the Geological Survey in cooperation with the Michigan State Highway Department in cooperation with the Michigan State Highway Department Control by USGS and USC&GS
Topography by photogrammetric methods from aerial photographs taken 1963. Field checked 1964
Polyconic projection. 1927 North American datum 10,000-foot grid based on Michigan coordinate system, south zone 1000-meter Universal Transverse Mercator grid ticks, zone 16, shown in blue
Fine red dashed lines indicate selected fence and field lines where generally visible on aerial photographs. This information is unchecked



USGS
Historical File
Topographic Division

THIS MAP COMPLIES WITH NATIONAL MAP ACCURACY STANDARDS
FOR SALE BY U. S. GEOLOGICAL SURVEY, WASHINGTON, D. C. 20242
A FOLDER DESCRIBING TOPOGRAPHIC MAPS AND SYMBOLS IS AVAILABLE ON REQUEST

LANGSTON, MICH.
N4315-W8507.5/7.5

1964
AMS 3970 1 SW - SERIES V862

SEP 28 1965
SEP 28 1965
2605

U.S.G.S.
FILE COPY
TOPOGRAPHIC DIVISION