

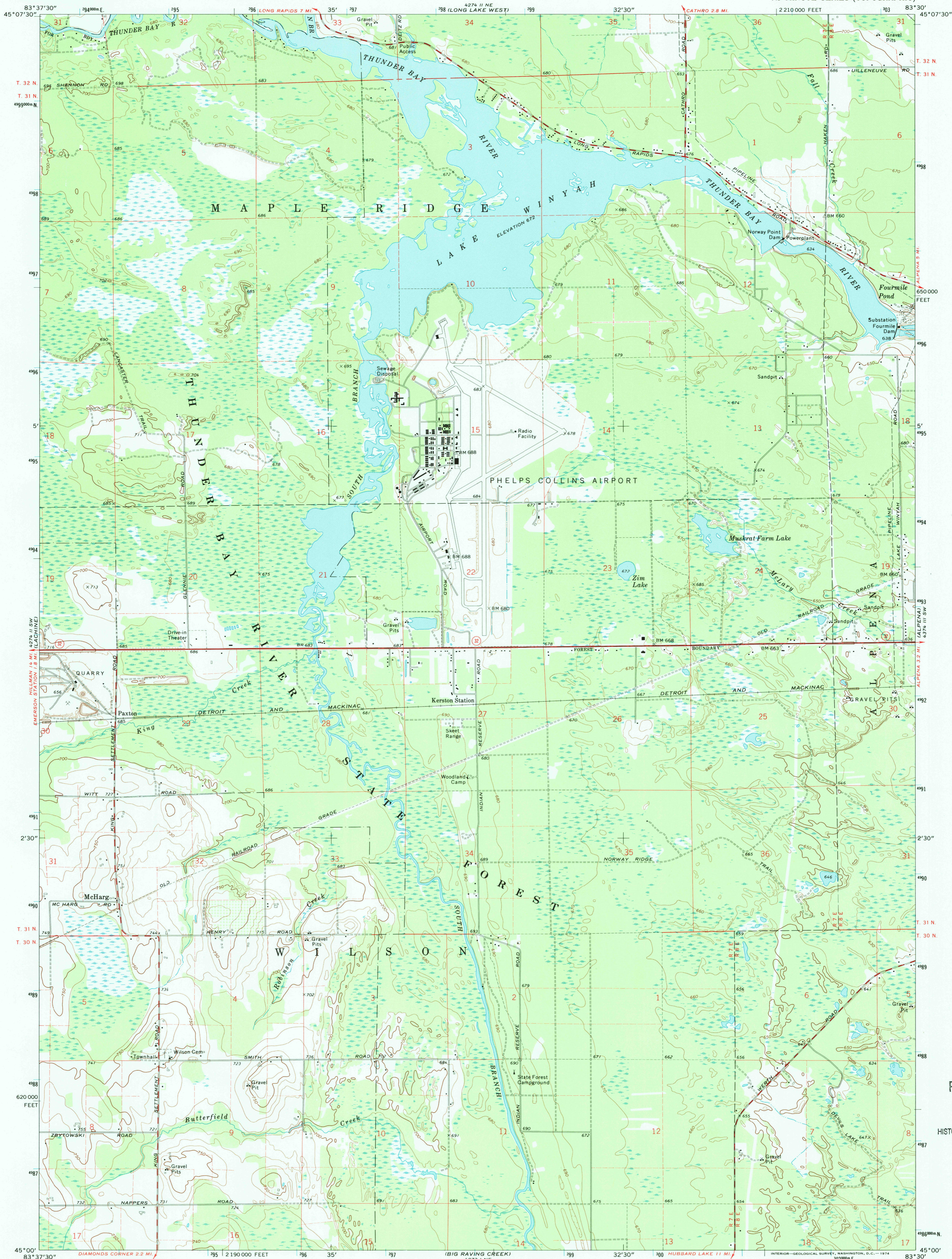
23° 11' 11" N  
104° 51' 11" W



U.S. DEPARTMENT OF THE INTERIOR  
U.S. GEOLOGICAL SURVEY

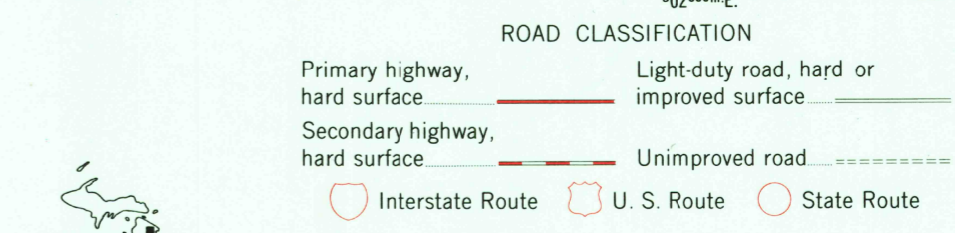
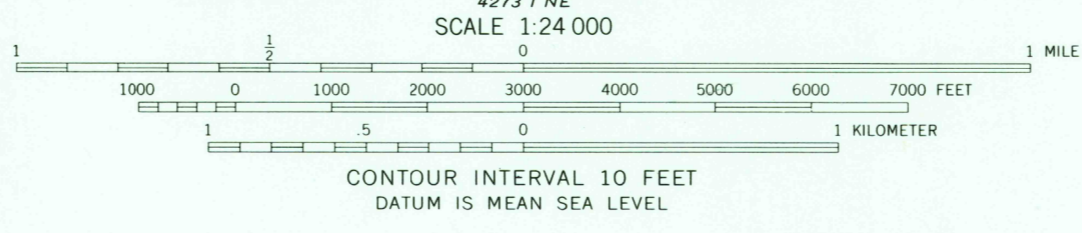
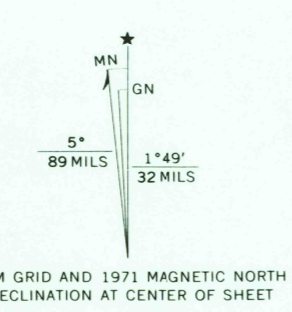
LAKE WINYAH QUADRANGLE  
MICHIGAN—ALPENA CO.  
7.5 MINUTE SERIES (TOPOGRAPHIC)

23° 11' 11" N  
104° 51' 11" W  
LONG LAKE EAST



RECEIVED  
AUG 31 2001  
HISTORICAL MAP ARCHIVES

Mapped, edited, and published by the Geological Survey  
Control by USGS and USC&GS  
Topography by photogrammetric methods from aerial  
photographs taken 1971. Field checked 1971  
Projection and 10,000-foot grid ticks: Michigan coordinate  
system, central zone (Lambert conformal conic)  
1000-meter Universal Transverse Mercator grid ticks,  
zone 17, shown in blue. 1927 North American datum  
Fine red dashed lines indicate selected fence and field lines where  
generally visible on aerial photographs  
This information is unchecked



LAKE WINYAH, MICH.  
N4500—W8330/7.5

1971

AMS 4274 II SE—SERIES V862

THIS MAP COMPLIES WITH NATIONAL MAP ACCURACY STANDARDS  
FOR SALE BY U.S. GEOLOGICAL SURVEY, DENVER, COLORADO 80225, OR RESTON, VIRGINIA 22092  
AND GEOLOGICAL SURVEY DIVISION  
MICHIGAN DEPARTMENT OF NATURAL RESOURCES, LANSING, MICHIGAN 48909  
A FOLDER DESCRIBING TOPOGRAPHIC MAPS AND SYMBOLS IS AVAILABLE ON REQUEST

