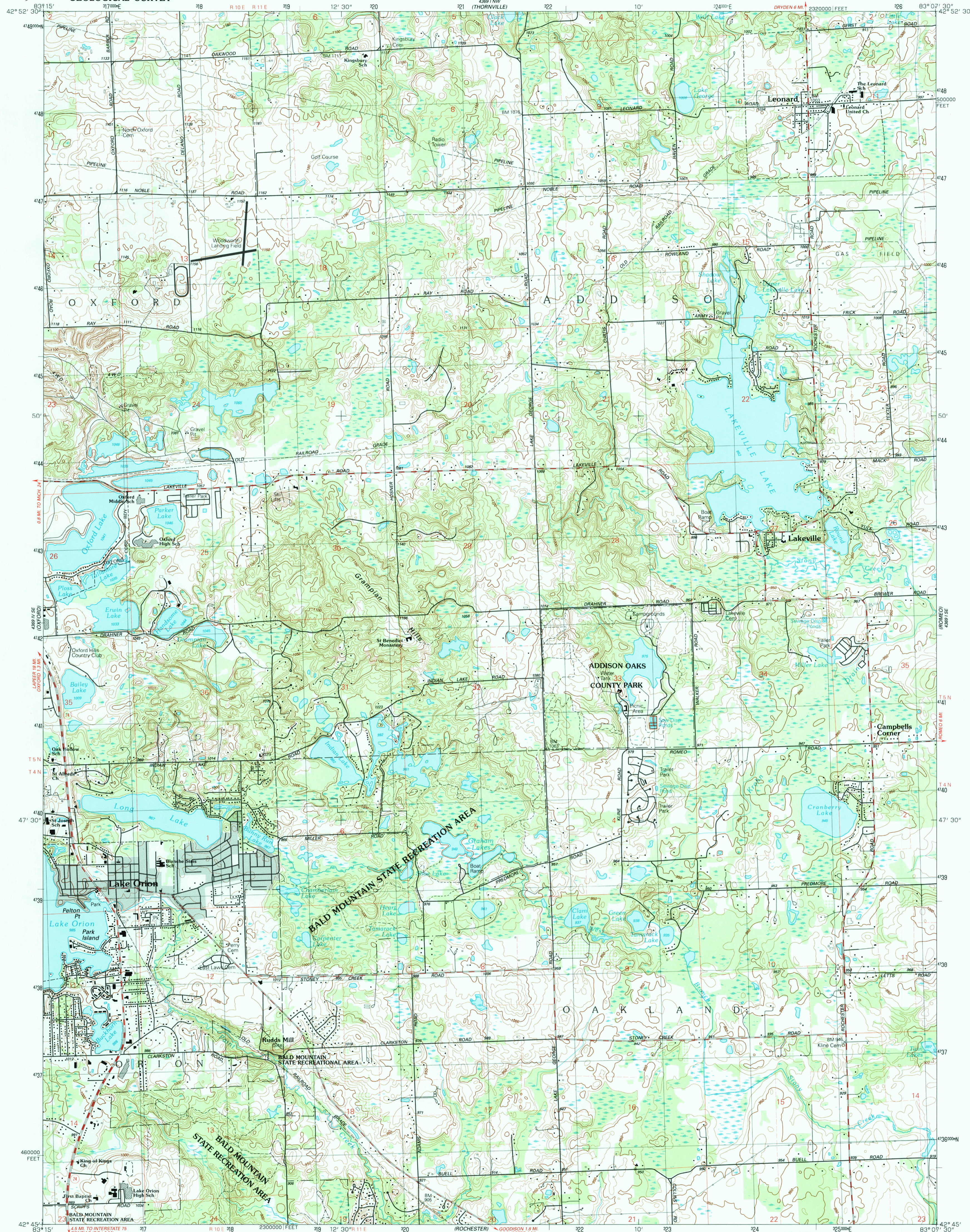


UNITED STATES
DEPARTMENT OF THE INTERIOR
GEOLOGICAL SURVEY

LAKE ORION QUADRANGLE
MICHIGAN-OAKLAND CO.
7.5 MINUTE SERIES (TOPOGRAPHIC)



Produced by the United States Geological Survey

Control by USGS and NOS/NOAA
Compiled from aerial photographs taken 1986
Field checked 1988. Map edited 1991

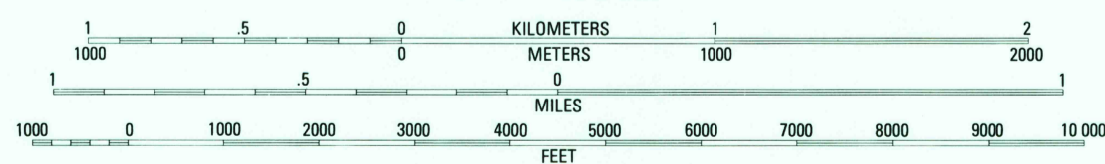
Projection and 10,000-foot grid ticks: Michigan coordinate system, south zone (Lambert conformal conic)
1000-meter Universal Transverse Mercator grid, zone 17
1927 North American Datum

To place on the predicted North American Datum 1983, move the projection line 7 meters west as shown by dashed corner ticks

There may be private inholdings within the boundaries of the National or State reservations shown on this map
Gray tint indicates area in which only landmark buildings are shown

Fine red dashed lines indicate selected fence and field lines where generally visible on aerial photographs. This information is unchecked

SCALE 1:24 000



CONTOUR INTERVAL 10 FEET
NATIONAL GEODETIC VERTICAL DATUM OF 1929

THIS MAP COMPLIES WITH NATIONAL MAP ACCURACY STANDARDS
FOR SALE BY U.S. GEOLOGICAL SURVEY, DENVER, COLORADO 80225, OR RESTON, VIRGINIA 22092
AND GEOLOGICAL SURVEY DIVISION
MICHIGAN DEPARTMENT OF NATURAL RESOURCES, LANSING, MICHIGAN 48909
A FOLDER DESCRIBING TOPOGRAPHIC MAPS AND SYMBOLS IS AVAILABLE ON REQUEST

ROAD CLASSIFICATION

- Primary highway, hard surface
- Secondary highway, hard surface
- Interstate Route
- U.S. Route
- Light-duty road, hard or improved surface
- Unimproved road
- State Route



LAKE ORION, MICH.

42083-G2-TF-024

1991

DMA 4369 I SW-SERIES V862

