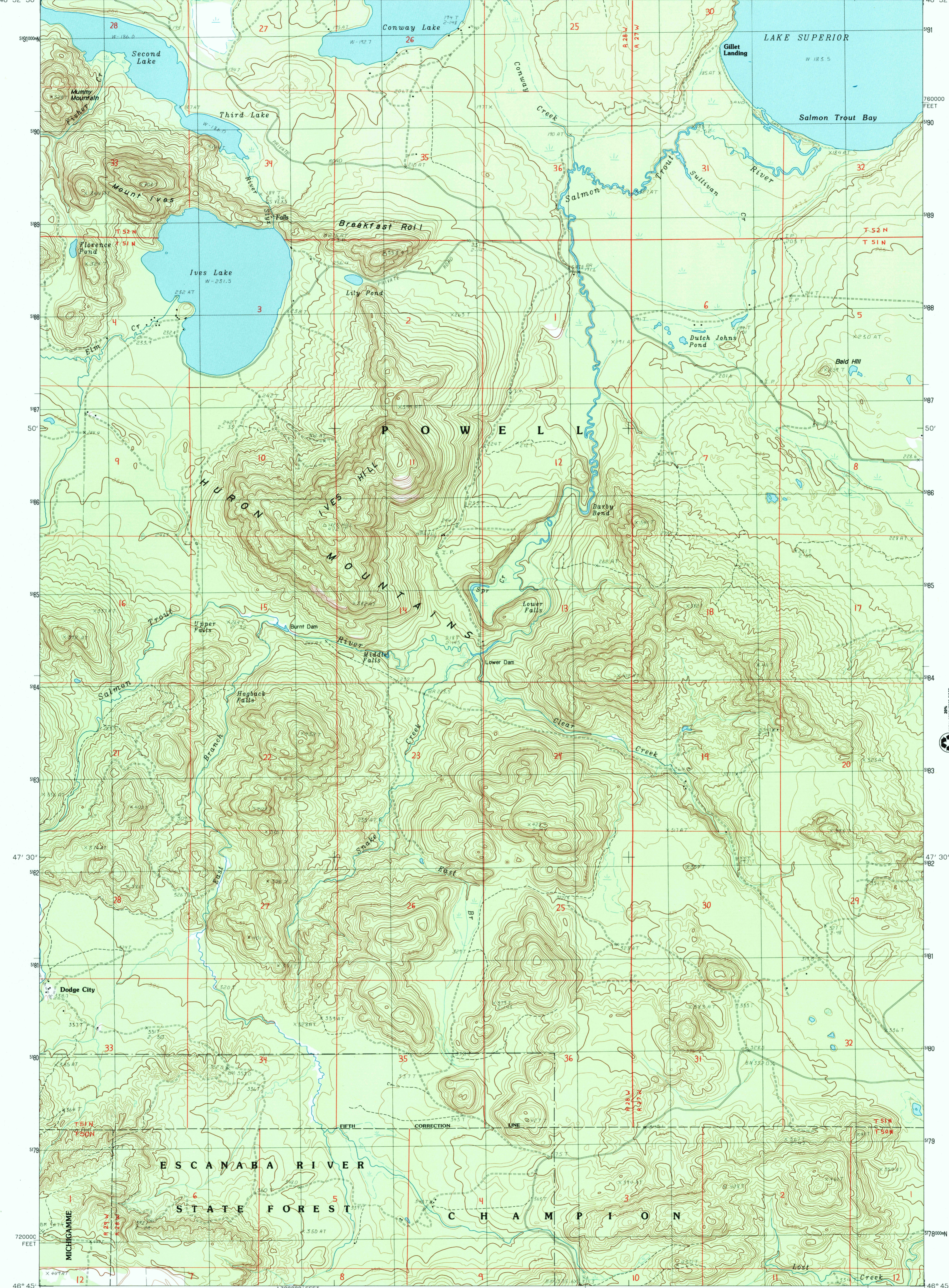
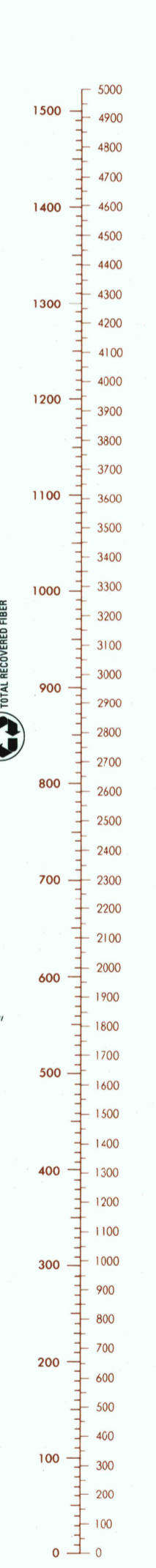


46° 52' 30" 47° 30' 40' 1810 000 FEET 87° 45' 46° 52' 30"



CONVERSION GRAPH  
(1 meter = 3.28 feet)

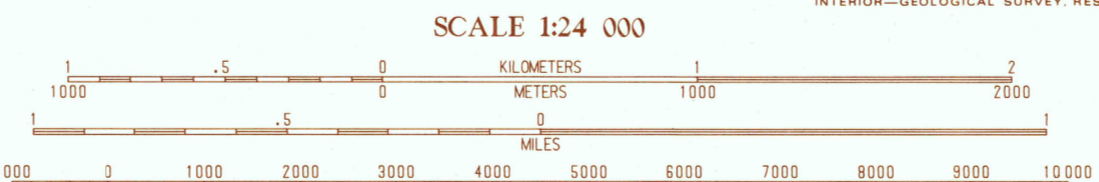


Meters	Feet
1	3.2808
2	6.5617
3	9.8425
4	13.1234
5	16.4042
6	19.6850
7	22.9659
8	26.2467
9	29.5275
10	32.8084

EXAMPLE: Convert 479 meters to feet  
479 = 400 + 70 + 9  
400m = 1312.3ft  
70m = 229.7ft  
9m = 29.5ft  
479m = 1571.5ft

PRODUCED BY THE UNITED STATES GEOLOGICAL SURVEY CONTROL BY: USGS AND NOS/NOAA COMPILED FROM AERIAL PHOTOGRAPHS TAKEN: 1980 FIELD CHECKED: 1982. MAP EDITED: 1984 PROJECTION: UNIVERSAL TRANSVERSE MERCATOR GRID: 1000-METER UNIVERSAL TRANSVERSE MERCATOR ZONE 16 10000-FOOT STATE GRID TICS: MICHIGAN, NORTH ZONE UTM GRID DECLINATION: 0°36' WEST 1984 MAGNETIC NORTH DECLINATION: 2°00' WEST HORIZONTAL DATUM: NATIONAL GEODETIC VERTICAL DATUM OF 1929 VERTICAL DATUM: 1929 NORTH AMERICAN DATUM To place on the predicted North American Datum of 1983, move the projection lines as shown by dashed corner ticks (7 meters north and 8 meters east) There may be private inholdings within the boundaries of any Federal and State Reservations shown on this map No distinction made between houses, barns, and other buildings

**PROVISIONAL MAP**  
Produced from original manuscript drawings. Information shown as of date of photography.



SCALE 1:24 000  
KILOMETERS 0 1 2  
METERS 0 1000 2000 3000 4000 5000 6000 7000 8000 9000 10000  
MILES 0 1 2  
FOOT 0 1000 2000 3000 4000 5000 6000 7000 8000 9000 10000  
CONTOUR INTERVAL 5 METERS  
SUPPLEMENTARY CONTOUR INTERVAL 2.5 METERS  
184.5 METER SUPPLEMENTARY CONTOUR ALONG SHORELINE  
CONTROL AND FIELD ESTABLISHED ELEVATIONS SHOWN TO THE NEAREST 0.1 METER  
OTHER ELEVATIONS SHOWN TO THE NEAREST METER  
To convert meters to feet multiply by 3.2808  
To convert feet to meters multiply by .3048  
THIS MAP COMPLIES WITH NATIONAL MAP ACCURACY STANDARDS FOR SALE BY U.S. GEOLOGICAL SURVEY, RESTON, VIRGINIA 22092 AND GEOLOGICAL SURVEY DIVISION MICHIGAN DEPARTMENT OF NATURAL RESOURCES, LANSING, MICHIGAN 48909



QUADRANGLE LOCATION

1	2	3	1 Ives Lake
4	5	2 Huron Mountain	3 Mountain Lake
6	7	4 Big Bay	5 Bulldog Lake
	8	6 Silver Lake Basin	7 Negaunee NW

CONTOURS AND ELEVATIONS IN METERS  
ROAD LEGEND  
Improved Road . . . . .  
Unimproved Road . . . . .  
Trail . . . . .  
Interstate Route U.S. Route State Route  
IVES HILL, MICHIGAN  
PROVISIONAL EDITION 1984  
46087-G7M-024

RECEIVED  
JAN 31 2000  
USGS WWL  
HISTORICAL MAP ARCHIVES  
ISBN 0-607-3554-8  
9 780607 255669