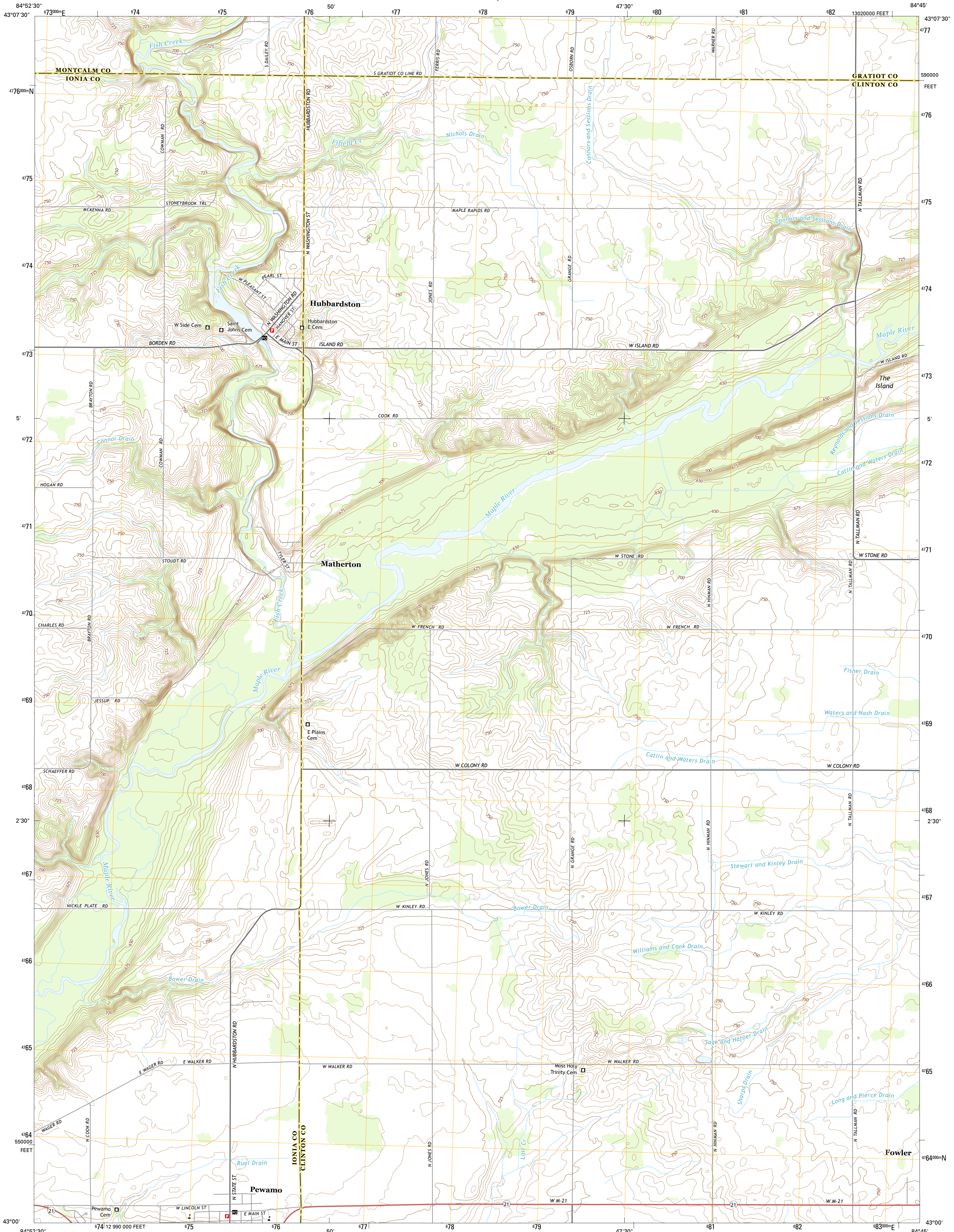




U.S. DEPARTMENT OF THE INTERIOR
U.S. GEOLOGICAL SURVEY



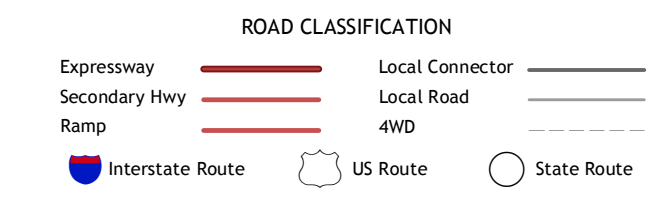
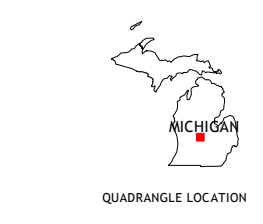
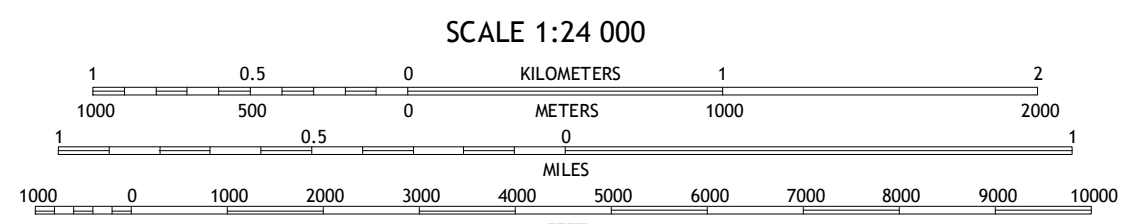
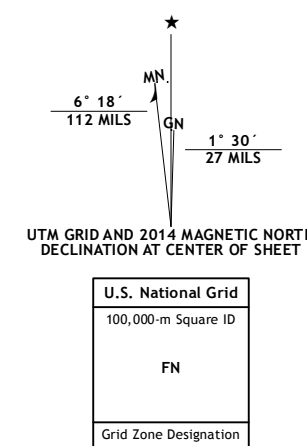
HUBBARDSTON QUADRANGLE
MICHIGAN
7.5-MINUTE SERIES



Produced by the United States Geological Survey
North American Datum of 1983 (NAD83)
World Geodetic System of 1984 (WGS84), Projection and
1 000-meter grid; Universal Transverse Mercator, Zone 16T
10 000-foot ticks; Michigan Coordinate System of 1983 (south
zone)

This map is not a legal document. Boundaries may be
generalized for this map scale. Private lands within government
reservations may not be shown. Obtain permission before
entering private lands.

Imagery:.....N.A.P., June 2012
Roads:.....HERE, 62013
Names:.....G.N.S., 2013
Hydrography:.....National Hydrography Dataset, 2012
Contours:.....National Elevation Dataset, 2011
Boundaries:.....Multiple sources; see metadata file 1972 - 2013
Public Land Survey System:.....B.L.M., 2011



1	2	3
4	5	6
7	8	

ADJOINING QUADRANGLES

1 Butternut
2 Carson City
3 Perrinton
4 Palo
5 Maple Rapids
6 Portland North
7 Westphalia
8 Riley

HUBBARDSTON, MI
2014

