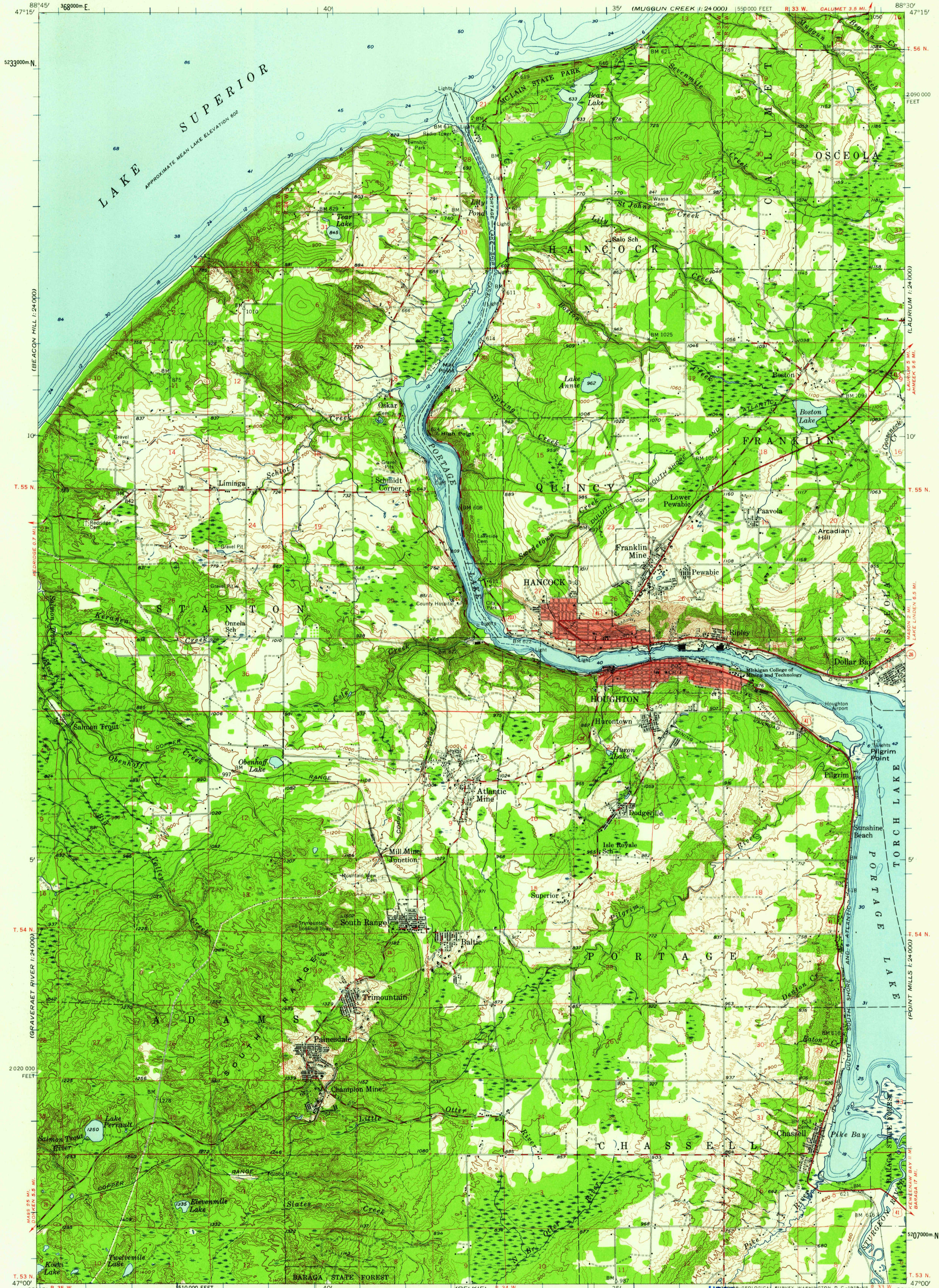


(AHMEEK 1:24,000)



Mapped, edited, and published by the Geological Survey  
Control by USGS, USC&GS, and USCE  
Compiled in 1959 from 1:24,000-scale maps of  
Hancock, Oskar, South Range and Chassell  
7.5 minute quadrangles, surveyed 1946 and 1954  
Topography from aerial photographs by photogrammetric methods  
Hydrography compiled from U. S. Lake Survey charts 944 (1952)  
and 94 (1952)  
Polyconic projection. 1927 North American datum  
10,000-foot grid based on Michigan coordinate system, west zone  
1000-meter Universal Transverse Mercator grid ticks,  
zone 16, shown in blue  
Red tint indicates areas in which only  
landmark buildings are shown

SCALE 1:62,500

1 2 3 4 5 6 7 8 9 10 11 12 13 14 15 16 17 18 19 20 21 22 23 24 25 26 27 28 29 30 31 32 33 34 35

3000 6000 9000 12000 15000 18000 21000 FEET

3 4 5 6 7 8 9 10 11 12 13 14 15 16 17 18 19 20 21 22 23 24 25 26 27 28 29 30 31 32 33 34 35

3 4 5 6 7 8 9 10 11 12 13 14 15 16 17 18 19 20 21 22 23 24 25 26 27 28 29 30 31 32 33 34 35

CONTOUR INTERVAL 20 FEET  
DATUM IS MEAN SEA LEVEL  
DEPTH CURVES AND SOUNDINGS IN FEET—DATUM IS 601 FEET

TRUE NORTH  
MAGNETIC NORTH

APPROXIMATE MEAN  
DECLINATION, 1954

THIS MAP COMPLIES WITH NATIONAL MAP ACCURACY STANDARDS  
FOR SALE BY U. S. GEOLOGICAL SURVEY, WASHINGTON 25, D. C.  
A FOLDER DESCRIBING TOPOGRAPHIC MAPS AND SYMBOLS IS AVAILABLE ON REQUEST

USGS  
Historical File  
Topographic Division

ROAD CLASSIFICATION

Light-duty  
Unimproved dirt

U. S. Route  
State Route

This area also covered by 1:24,000-scale maps of  
Hancock 1946, Oskar 1954, South Range 1946 and  
Chassell 1946 7.5 minute quadrangles

HOUGHTON, MICH.  
N 4700—W 8830/15

1954  
MINOR CORRECTIONS MADE 1959

U.S.G.S.  
FILE COPY  
TOPOGRAPHIC DIVISION

JUL 28 1959

3445