

U. S. G. S. SW  
HELENA  
Inspect and Editing

Advance sheet  
Subject to correction

87°22'30" R.25 W. R.24 W.  
46°15'

(Harvey SE)

17'30"

46°15'

T.45 N.  
T.44 N.

T.45 N.  
T.44 N.

12'30"

12'30"

10'

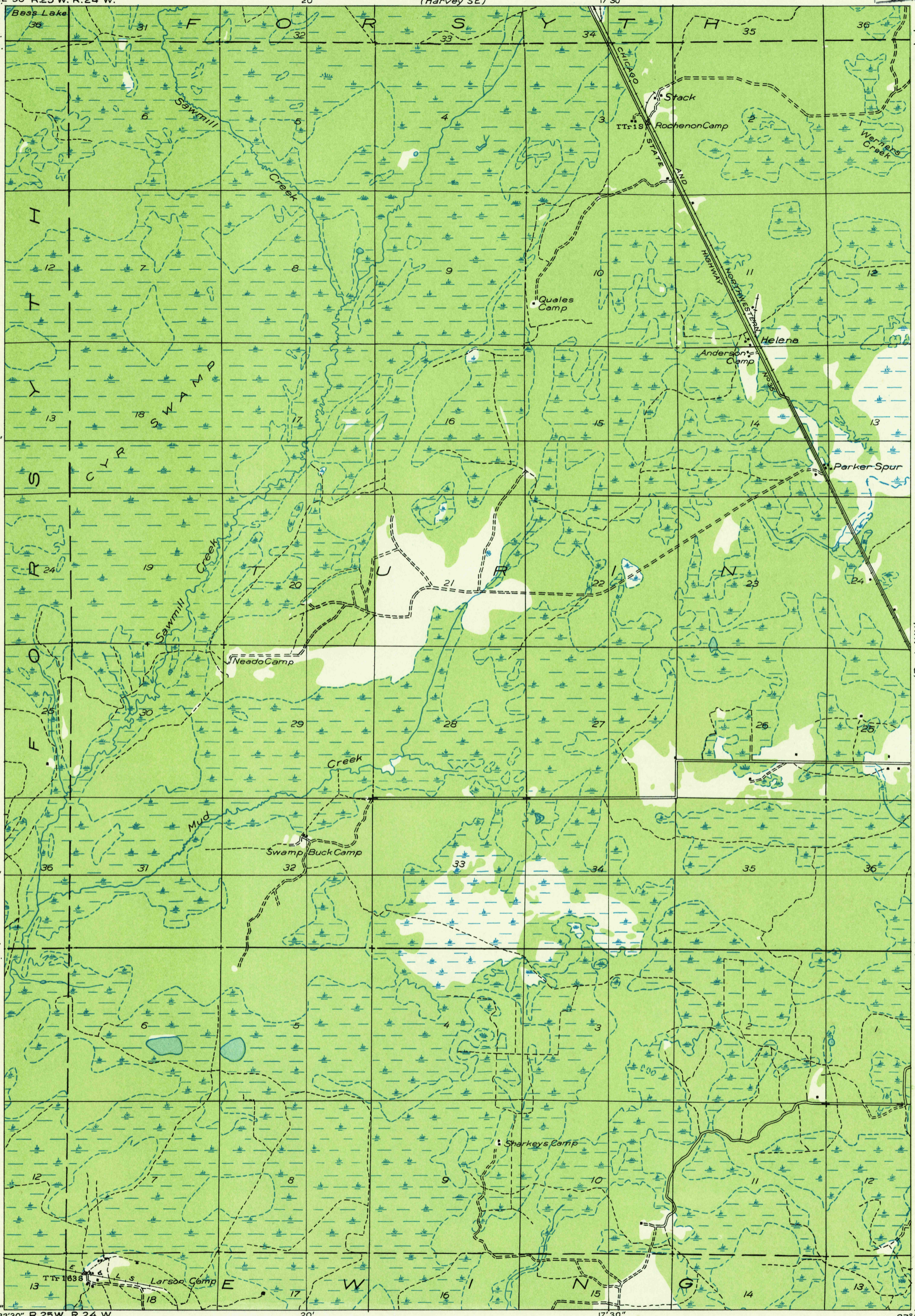
10'

T.44 N.  
T.43 N.

T.44 N.  
T.43 N.

46°07'30"  
87°22'30" R.25 W. R.24 W.

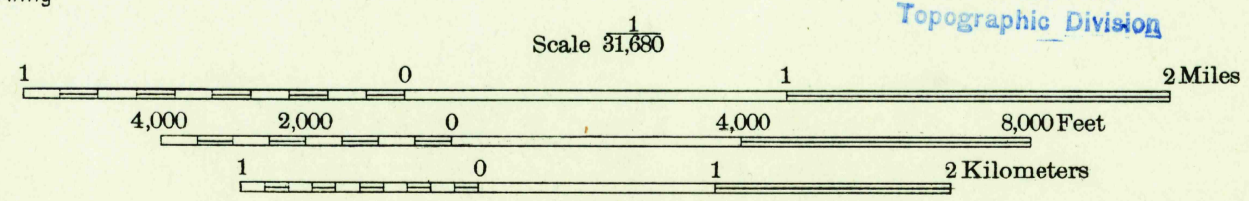
46°07'30"  
87°15'



Glenn S. Smith, Division Engineer  
Compiled by U. S. Geological Survey after field examination  
of aerial photographs taken by Air Corps, U. S. Army  
Control by U. S. Geological Survey  
Field examination in 1932

USGS  
Historical File  
Topographic Division

Polyconic projection. North American datum



TRUE NORTH  
MAGNETIC NORTH  
APPROXIMATE MEAN  
DECLINATION, 1932

HELENA, MICH.  
(NE)

(Rock SW)