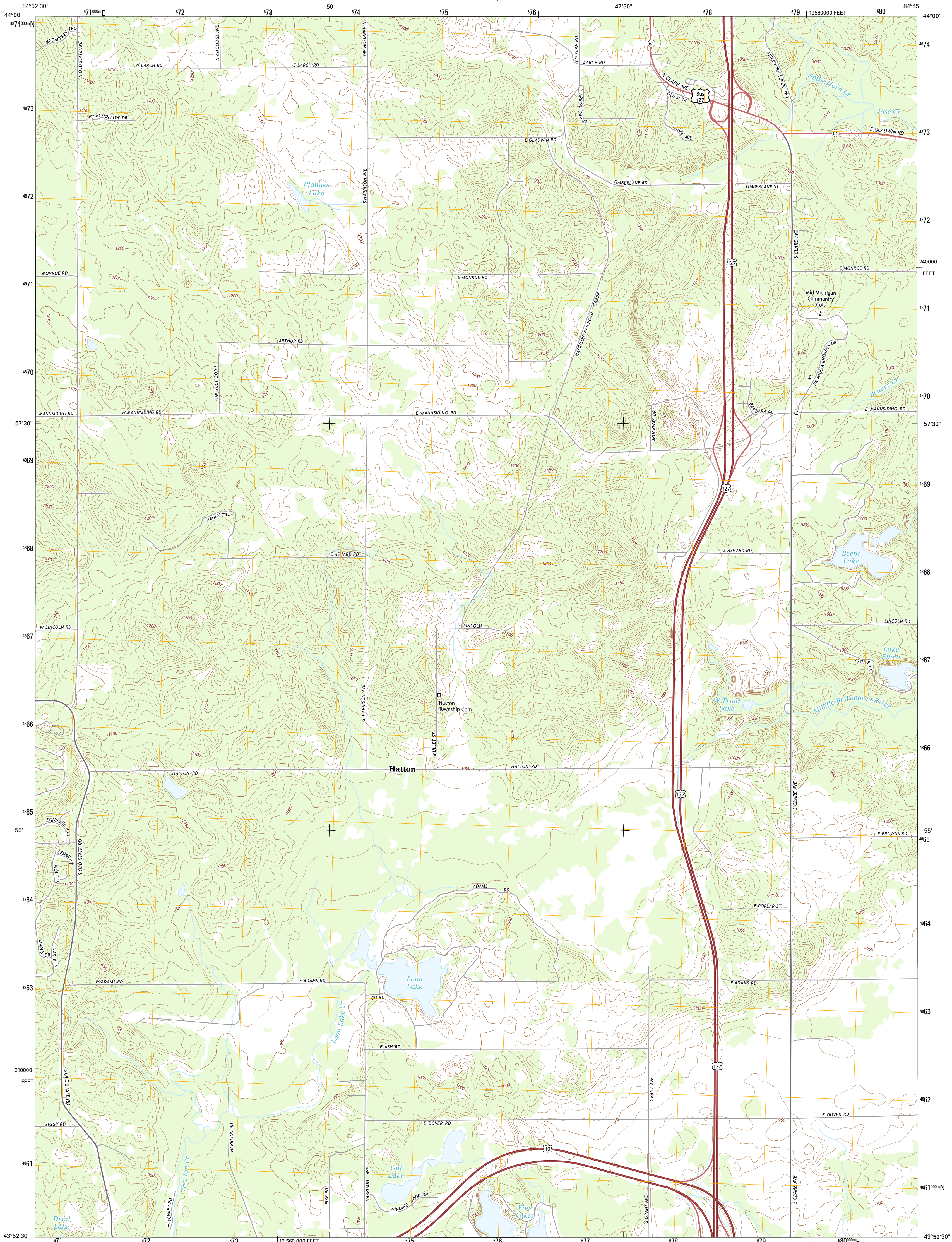




U.S. DEPARTMENT OF THE INTERIOR  
U.S. GEOLOGICAL SURVEY



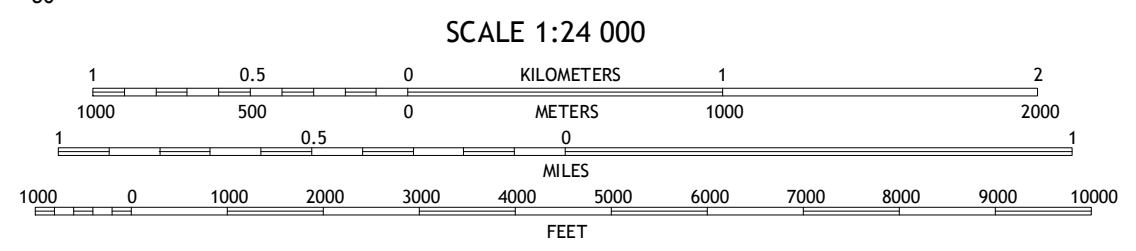
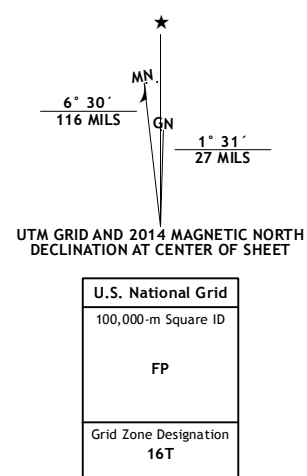
HATTON QUADRANGLE  
MICHIGAN-CLARE CO.  
7.5-MINUTE SERIES



Produced by the United States Geological Survey  
North American Datum of 1983 (NAD83)  
World Geodetic System of 1984 (WGS84) Projection and  
1 000-meter grid: Universal Transverse Mercator, Zone 16T  
10 000-foot ticks: Michigan Coordinate System of 1983 (central zone)

This map is not a legal document. Boundaries may be generalized for this map scale. Private lands within government reservations may not be shown. Obtain permission before entering private lands.

Imagery.....NAIP July 2012  
Roads.....HERE ©2013  
Names.....GNS 2013  
Hydrography.....National Hydrography Dataset, 2012  
Contours.....National Elevation Dataset, 1999  
Boundaries.....Multiple sources; see metadata file 1972 - 2013  
Public Land Survey System.....BLM, 2011



ROAD CLASSIFICATION

|                  |                 |
|------------------|-----------------|
| Expressway       | Local Connector |
| Secondary Hwy    | Local Road      |
| Ramp             | 4WD             |
| Interstate Route | US Route        |
|                  | State Route     |

|   |   |   |
|---|---|---|
| 1 | 2 | 3 |
| 4 | 5 | 6 |
| 7 | 8 | 9 |

ADJOINING QUADRANGLES

1 Prestle Creek  
2 Harrison  
3 Meredith SW  
4 Lake George  
5 Browns Corners  
6 Woods  
7 Clare  
8 Loomis

HATTON, MI  
2014

