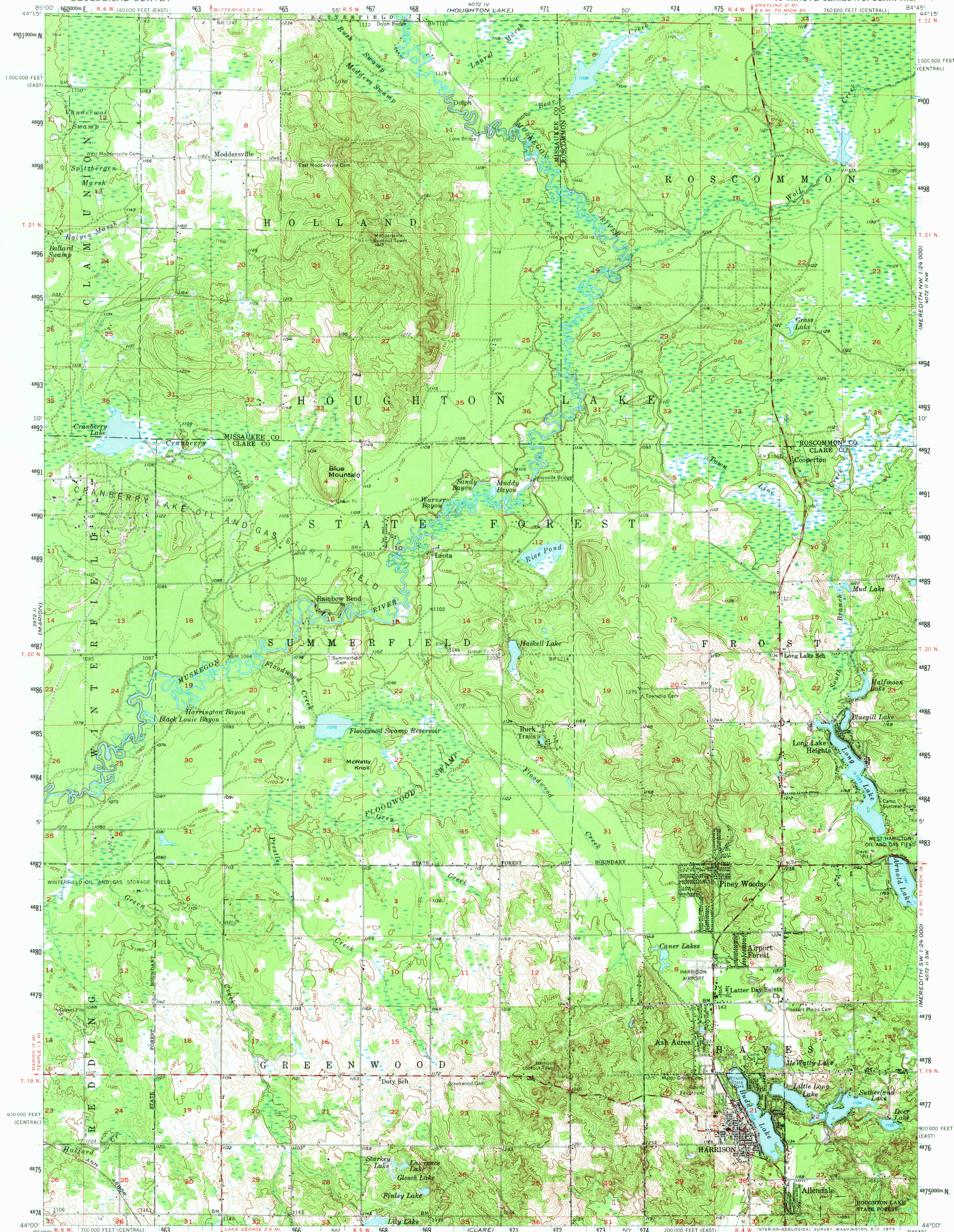


LAKE CITY

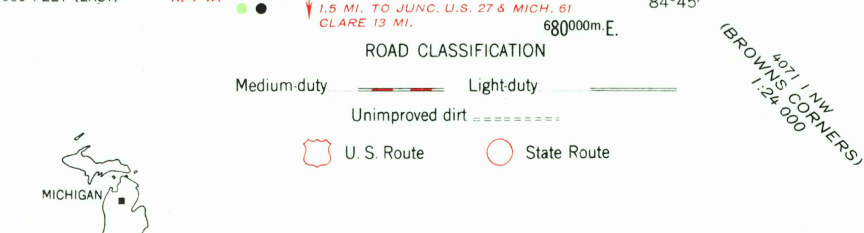
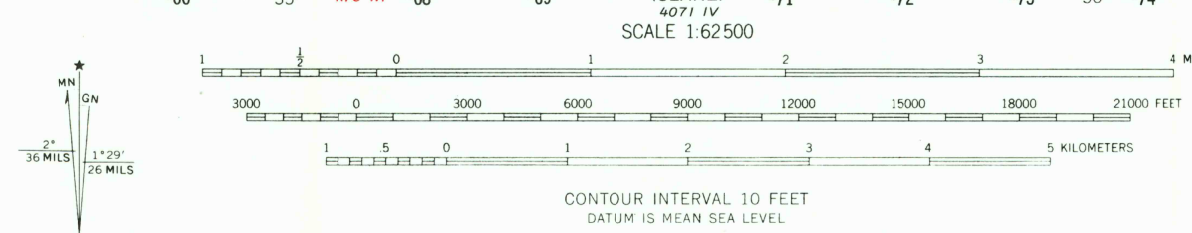
UNITED STATES
DEPARTMENT OF THE INTERIOR
GEOLOGICAL SURVEY

HARRISON QUADRANGLE
MICHIGAN
15 MINUTE SERIES (TOPOGRAPHIC)

4072 I SW
PROJONVILLE
1:24,000



Maped, edited, and published by the Geological Survey
Control by USGS and USC&GS
Topography from aerial photographs by Kelsh plotter
Aerial photographs taken 1954-1955. Field check 1957
Polyconic projection. 1927 North American datum
10,000-foot grids based on Michigan coordinate system,
east and central zones
1000-meter Universal Transverse Mercator grid ticks,
zone 16, shown in blue



THIS MAP COMPLIES WITH NATIONAL MAP ACCURACY STANDARDS
FOR SALE BY U.S. GEOLOGICAL SURVEY, WASHINGTON, D. C. 20242
A FOLDER DESCRIBING TOPOGRAPHIC MAPS AND SYMBOLS IS AVAILABLE ON REQUEST

HARRISON, MICH.
N 4400- W 8445/15
1957
AMS 4072 III-SERIES V762

NOV 27 1981

1910