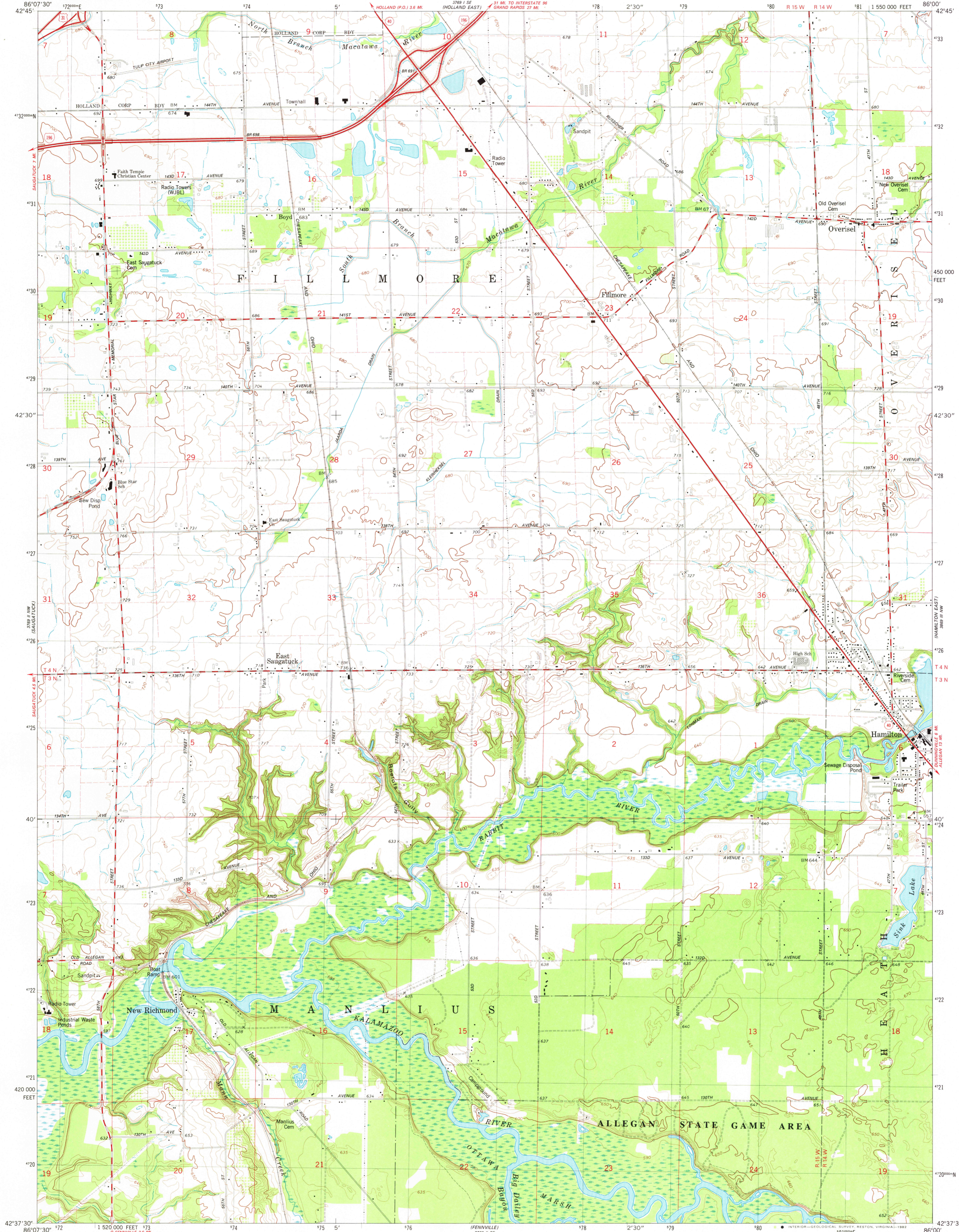
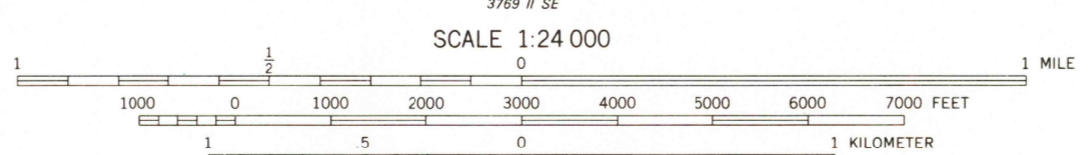
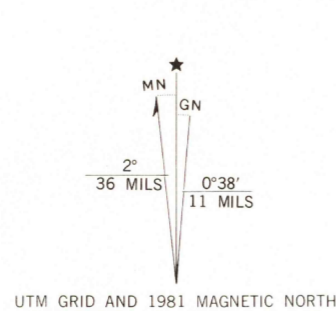


UNITED STATES
DEPARTMENT OF THE INTERIOR
GEOLOGICAL SURVEY

HAMILTON WEST QUADRANGLE
MICHIGAN-ALLEGAN CO.
7.5 MINUTE SERIES (TOPOGRAPHIC)
NE 1/4 FENNVILLE 15' QUADRANGLE



Mapped, edited, and published by the Geological Survey
Control by USGS and NOS/NOAA
Topography by photogrammetric methods from aerial photographs taken 1976. Field checked 1978. Map edited 1981
Projection and 10,000-foot grid ticks: Michigan coordinate system, south zone (Lambert conformal conic)
1000-meter Universal Transverse Mercator grid, zone 16 1927 North American Datum
To place on the predicted North American Datum 1983 move the projection lines 1 meter north and 2 meters east as shown by dashed corner ticks
There may be private inholdings within the boundaries of the National or State reservations shown on this map
Fine red dashed lines indicate selected fence and field lines where generally visible on aerial photographs. This information is unchecked



CONTOUR INTERVAL 10 FEET
DOTTED LINES REPRESENT 5-FOOT CONTOURS
NATIONAL GEODETIC VERTICAL DATUM OF 1929

THIS MAP COMPLIES WITH NATIONAL MAP ACCURACY STANDARDS
FOR SALE BY U. S. GEOLOGICAL SURVEY, RESTON, VIRGINIA 22092
AND BY THE GEOLOGICAL SURVEY DIVISION
MICHIGAN DEPARTMENT OF NATURAL RESOURCES, LANSING, MICHIGAN 48909
A FOLDER DESCRIBING TOPOGRAPHIC MAPS AND SYMBOLS IS AVAILABLE ON REQUEST



ROAD CLASSIFICATION

Primary highway, hard surface	Light-duty road, hard or improved surface
Secondary highway, hard surface	Unimproved road
Interstate Route	U. S. Route
	State Route

HAMILTON WEST, MICH.
NE 1/4 FENNVILLE 15' QUADRANGLE
N4237.5-W8600/7.5

1981
DMA 3769 II NE-SERIES V862

MAR 3 1982

2252