

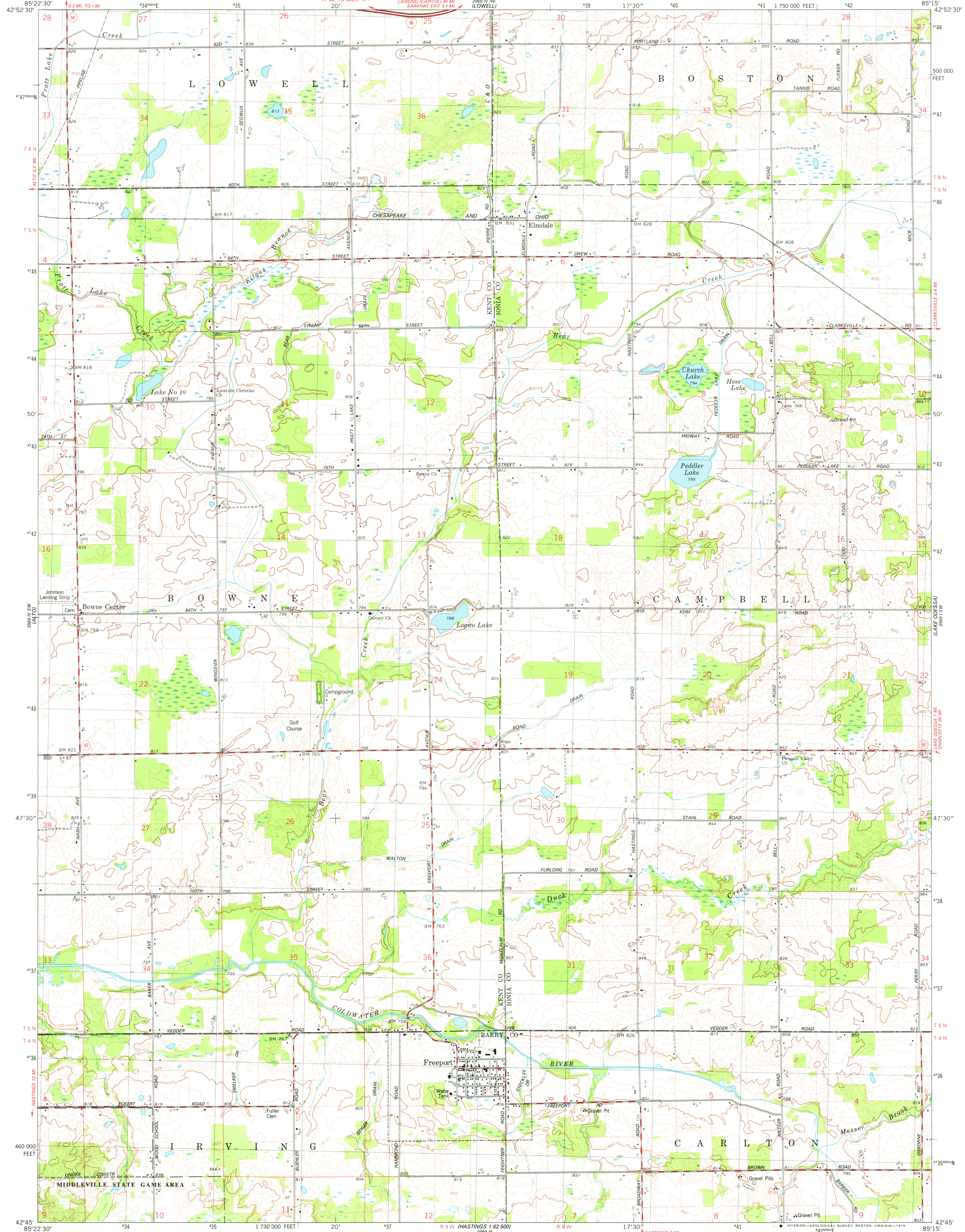
3869 N.W. (CAROLINE)

UNITED STATES DEPARTMENT OF THE INTERIOR GEOLOGICAL SURVEY

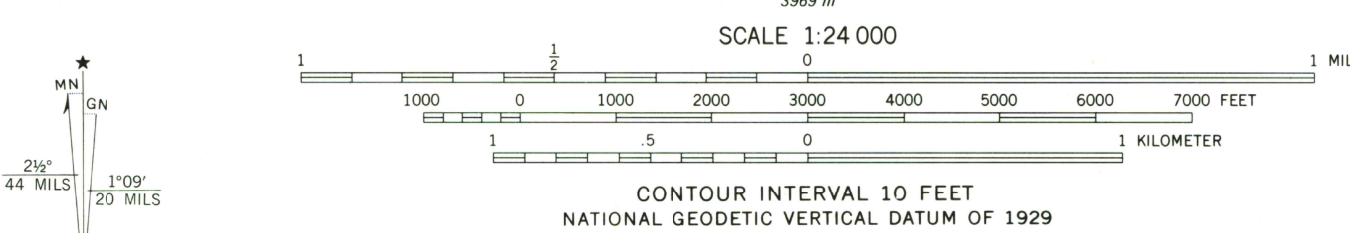


FREEPORT QUADRANGLE MICHIGAN 7.5 MINUTE SERIES (TOPOGRAPHIC)

3869 N.W. (CAROLINE)



Mapped, edited, and published by the Geological Survey Control by USGS and NOS/NOAA Topography by photogrammetric methods from aerial photographs taken 1974. Field checked 1975. Map edited 1978 Projection and 10,000-foot grid ticks. Michigan coordinate system, south zone (Lambert conformal conic) 1000-meter Universal Transverse Mercator grid, zone 16 1927 North American datum Fine red dashed lines indicate selected fence and field lines where generally visible on aerial photographs. This information is unchecked There may be private inholdings within the boundaries of the National or State reservations shown on this map



ROAD CLASSIFICATION Primary highway, hard surface Light-duty road, hard or improved surface Secondary highway, hard surface Unimproved road Interstate Route U. S. Route State Route

THIS MAP COMPLIES WITH NATIONAL MAP ACCURACY STANDARDS FOR SALE BY U.S. GEOLOGICAL SURVEY, RESTON, VIRGINIA 22092 AND BY THE GEOLOGICAL SURVEY DIVISION MICHIGAN DEPARTMENT OF NATURAL RESOURCES, LANSING, MICHIGAN 48909 A FOLDER DESCRIBING TOPOGRAPHIC MAPS AND SYMBOLS IS AVAILABLE ON REQUEST

FREEPORT, MICH. SE/4 LOWELL 15' QUADRANGLE N4245-W8515/7.5 1978 AMS 3969 IV SE-SERIES V862