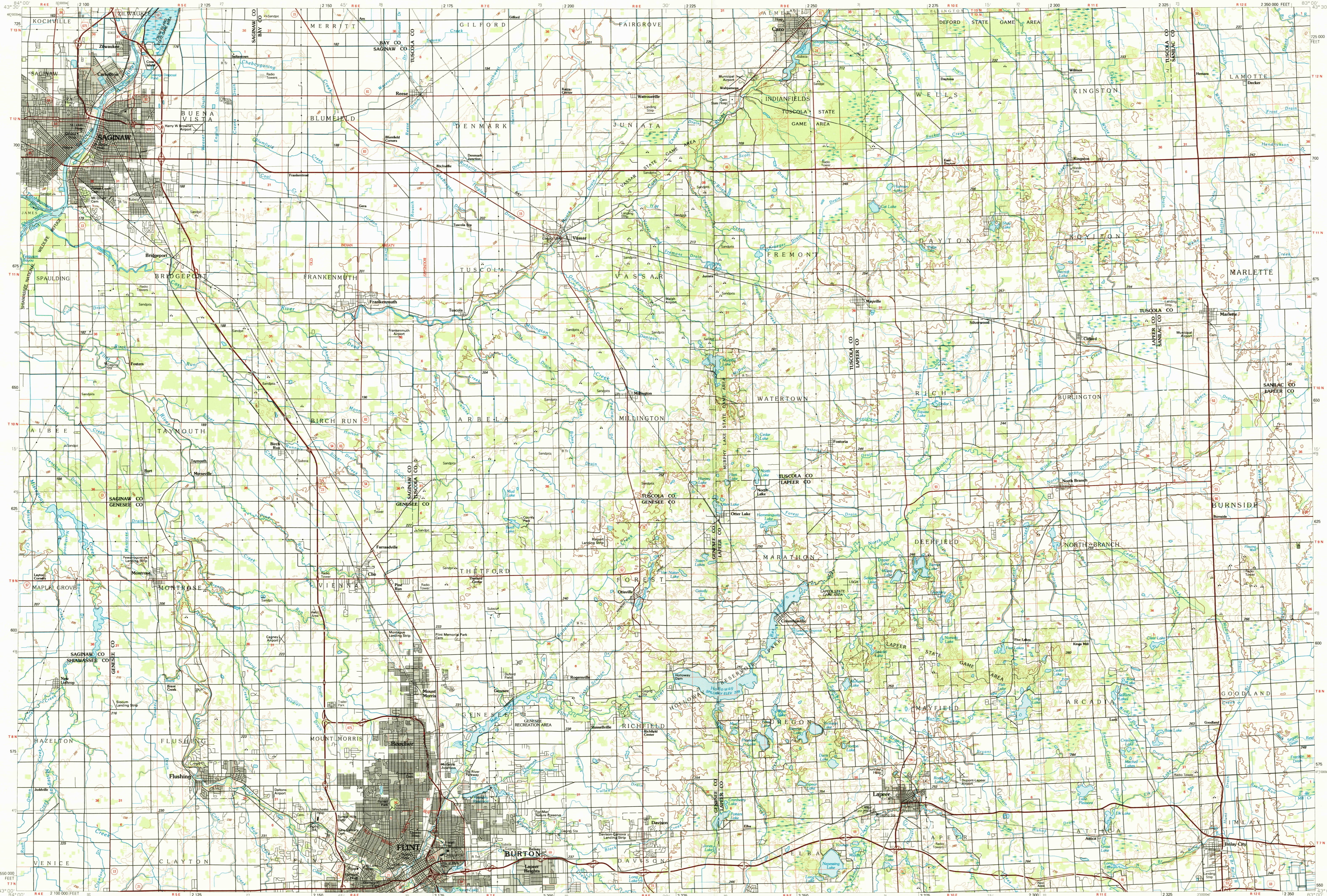


FLINT, MICHIGAN

30 X 60 MINUTE SERIES (TOPOGRAPHIC)



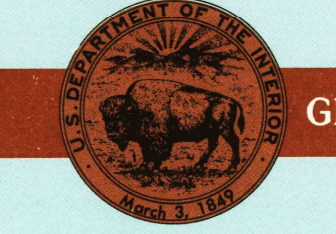
Flint MICHIGAN

1:100 000-scale metric topographic map



30 X 60 MINUTE QUADRANGLE SHOWING

- Contours and elevations in meters
- Highways, roads and other manmade structures
- Water features
- Woodland areas
- Geographic names



GEOLOGICAL SURVEY

1990

Produced by the United States Geological Survey
 Compiled from USGS 1:24 000 and 1:62 500-scale topographic maps dated 1963-1980. Planimetry revised from aerial photographs taken 1982 and 1987 and other source data. Revised information not field checked. Map edited 1990.
 Projection and 10 000-meter grid, zone 17.
 Universal Transverse Mercator
 25 000-foot grid ticks based on Michigan coordinate system, south zone
 1927 North American Datum
 To place on the predicted North American Datum 1983, move the projection lines 1 meter north and 6 meters west.
 There may be private inholdings within the boundaries of the National or State reservations shown on this map.

CONTOUR INTERVAL 10 METERS
 SUPPLEMENTARY CONTOUR INTERVAL 5 METERS
 NATIONAL GEODESIC VERTICAL DATUM OF 1929
 ELEVATIONS SHOWN TO THE NEAREST METER

THIS MAP COMPLIES WITH NATIONAL MAP ACCURACY STANDARDS

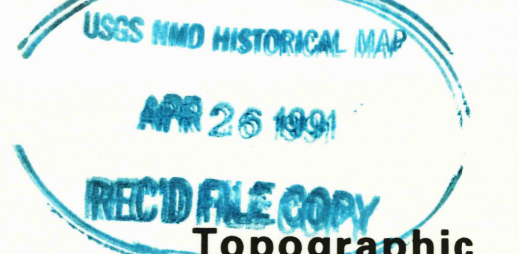
CONVERSION TABLE		DECLINATION DIAGRAM		ADJOINING MAPS		
Meters	Feet	Miles	Feet	1	2	3
1	3.2808	0	0	1	2	3
2	6.5617	0	0	4	5	
3	9.8425	0	0	6	7	8
4	13.1234	0	0			
5	16.4042	0	0			
6	19.6850	0	0			
7	22.9659	0	0			
8	26.2467	0	0			
9	29.5275	0	0			
10	32.8084	0	0			

To convert meters to feet multiply by 3.2808
 To convert feet to meters multiply by 0.3048

UTM grid convergence (GM) and topographic declination (M) at center of map. Diagram is approximate.

1 Midland
 2 Bay City
 3 Harbor Beach
 4 Alma
 5 Crosswell
 6 Lansing
 7 Pontiac
 8 Lake St. Clair North

FOR SALE BY U.S. GEOLOGICAL SURVEY
 DENVER, COLORADO 80225, OR RESTON, VIRGINIA 22092



Topographic Map Symbols

Primary highway, hard surface	—————
Secondary highway, hard surface	—————
Light duty road, principal street, hard or improved surface	—————
Other road or street, trail	—————
Road marker: Interstate, U.S. State	—————
Railroad: standard gage, narrow gage	—————
Bridge: overpass, underpass	—————
Tunnel: road, railroad	—————
Built-up area, locality, elevation	—————
Airport: landing field, landing strip	—————
National boundary	—————
State boundary	—————
County boundary	—————
National or State reservation boundary	—————
Land grant boundary	—————
U.S. public lands survey: range, township, section	—————
Range, township, section line: protected	—————
Power transmission line: pipeline	—————
Dam: dam with lock	—————
Canal: holding	—————
Windmill, water well; spring	—————
Mine shaft; adit or cave; mine, quarry, gravel pit	—————
Campground; picnic area; U.S. location monument	—————
Ruin; cliff dwelling	—————
Distorted surface: strip mine, lava, sand	—————
Contours: index, intermediate, supplementary	—————
Bathymetric contours: index, intermediate	—————
Stream, lake: perennial, intermittent	—————
Ripids, large and small; falls, large and small	—————
Area to be submerged; marsh, swamp	—————
Land subject to controlled inundation; woodland	—————
Scrub; mangrove	—————
Orchard; vineyard	—————

A pamphlet describing topographic maps is available on request