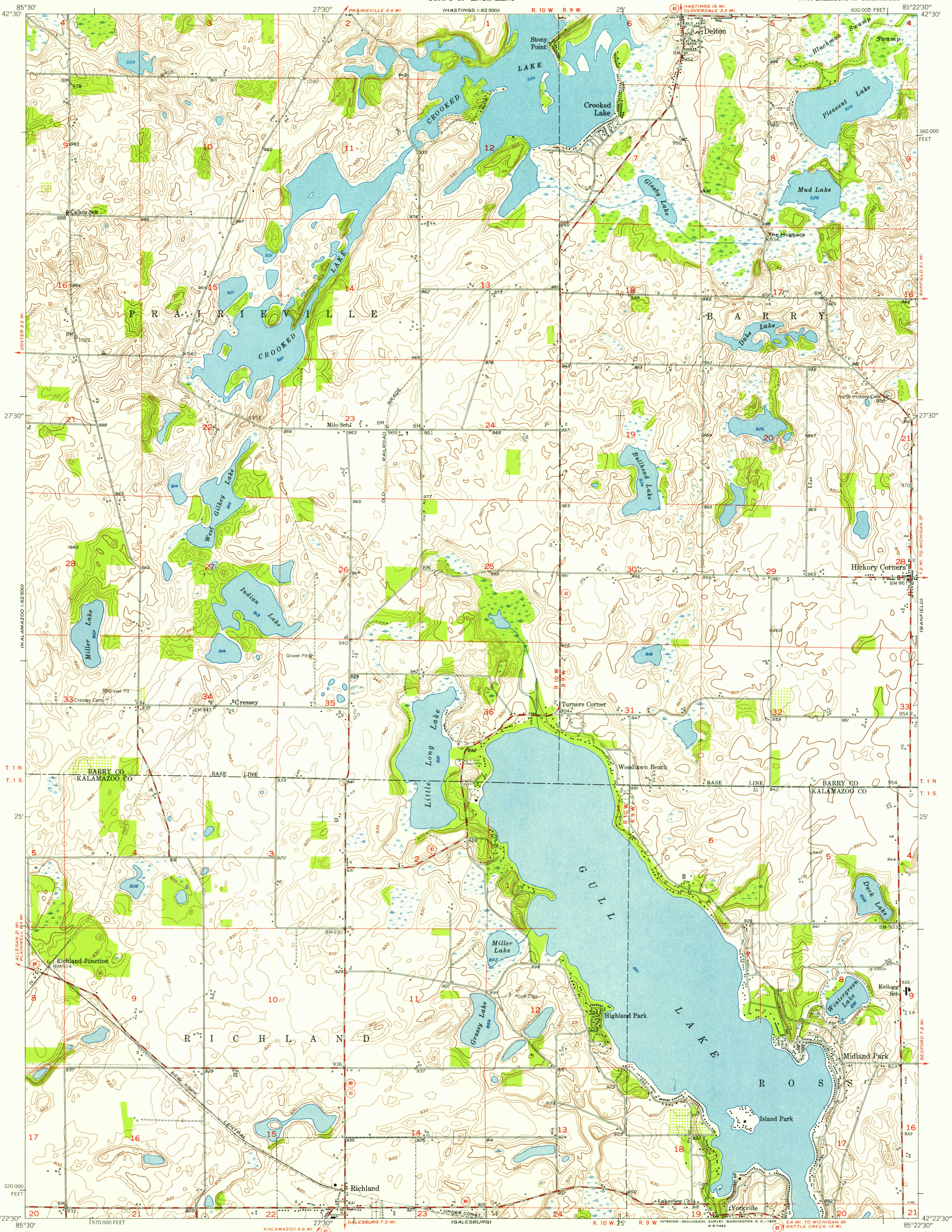


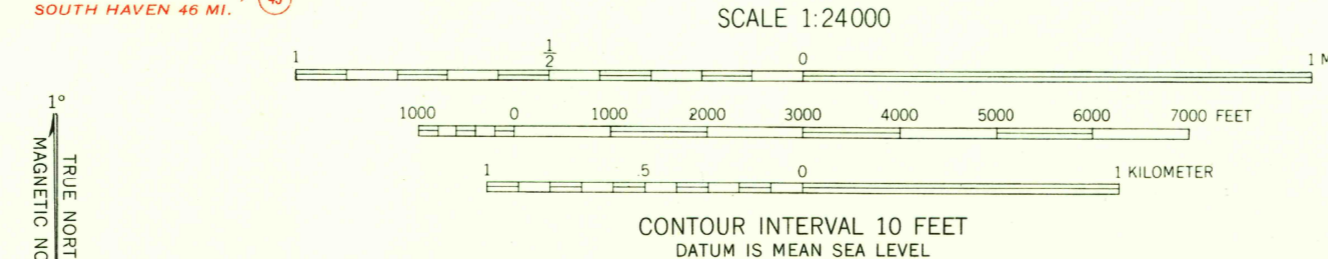
1:62,500



U.S.G.S.
FILE COPY
TOPOGRAPHIC DIVISION

U.S.G.S.
FILE COPY
TOPOGRAPHIC DIVISION

Maped, edited, and published by the Geological Survey
Control by USGS and USC&GS
Culture and drainage in part compiled from aerial photographs
taken 1946. Topography by plane-table surveys 1947
Polyconic projection. 1927 North American datum
10,000-foot grid based on Michigan coordinate system,
central zone



USGS
Historical File
Topographic Division

ROAD CLASSIFICATION	
Heavy-duty	4 LANE 16 LANE
Medium-duty	4 LANE 16 LANE
Light-duty	Unimproved dirt

U. S. Route State Route



DELTON, MICH.
NW/4 GALESBURG 15' QUADRANGLE
N4222.5—W8522.5/7.5

1947

JUL 22 1955

THIS MAP COMPLIES WITH NATIONAL MAP ACCURACY STANDARDS
FOR SALE BY U. S. GEOLOGICAL SURVEY, WASHINGTON 25, D. C.
A FOLDER DESCRIBING TOPOGRAPHIC MAPS AND SYMBOLS IS AVAILABLE ON REQUEST

2625