

83° 37' 30" 42° 52' 30" 520000 FEET 35' 32' 30" 83° 30' 42° 52' 30"

500000
FEET

50'

(Holly 62500)

47' 30"

2280000
YARDS

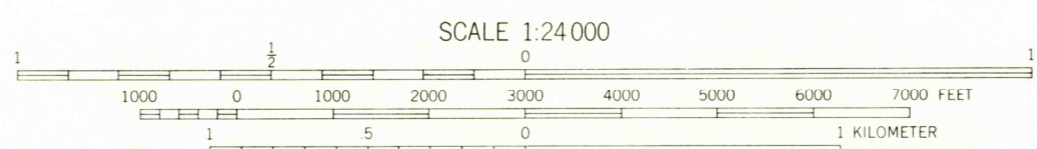
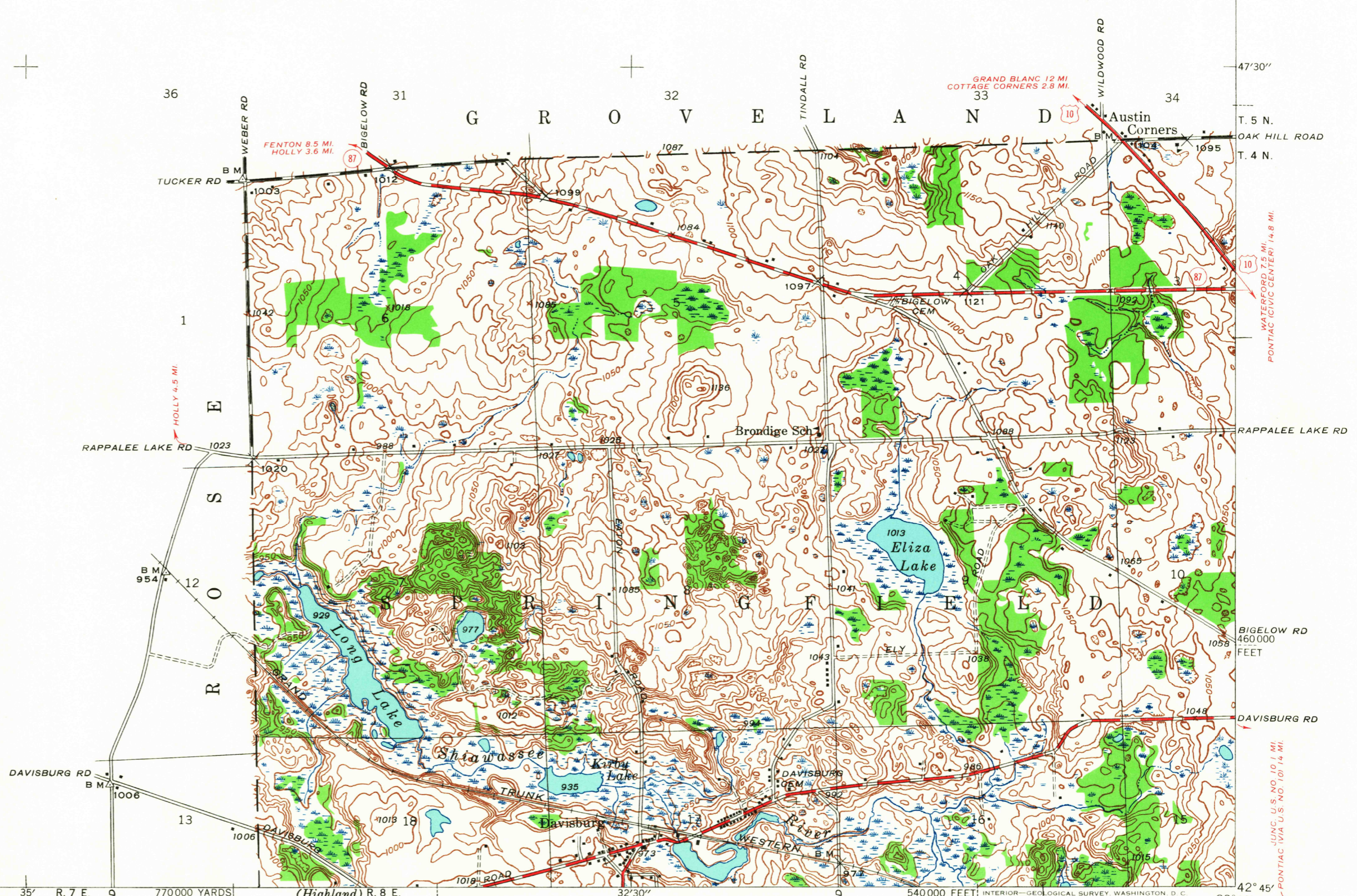
42° 45'

Mapped by the Geological Survey
1942

(Maj) (Holly)
62500

TRUE NORTH
MAGNETIC NORTH
APPROXIMATE MEAN
DECLINATION, 1942

THIS AREA IS SHOWN ON THE MAP OF THE HOLLY
QUADRANGLE SURVEYED IN 1920, SCALE 1:62500



Contour interval 10 feet
Datum is mean sea level

FOR SALE BY U. S. GEOLOGICAL SURVEY, WASHINGTON, D. C. 20242
A FOLDER DESCRIBING TOPOGRAPHIC MAPS AND SYMBOLS IS AVAILABLE ON REQUEST

U.S.G.S.
TOPOGRAPHIC DIVISION

Polyconic projection. 1927 North American datum
5000 yard grid based on U. S. zone system, B
10000 foot grid based on Michigan (East)
rectangular coordinate system

DAVISBURG, MICH.
Edition of 1945
N 4245-W 8330/7.5

950

FILE COPY
TOPOGRAPHIC DIVISION