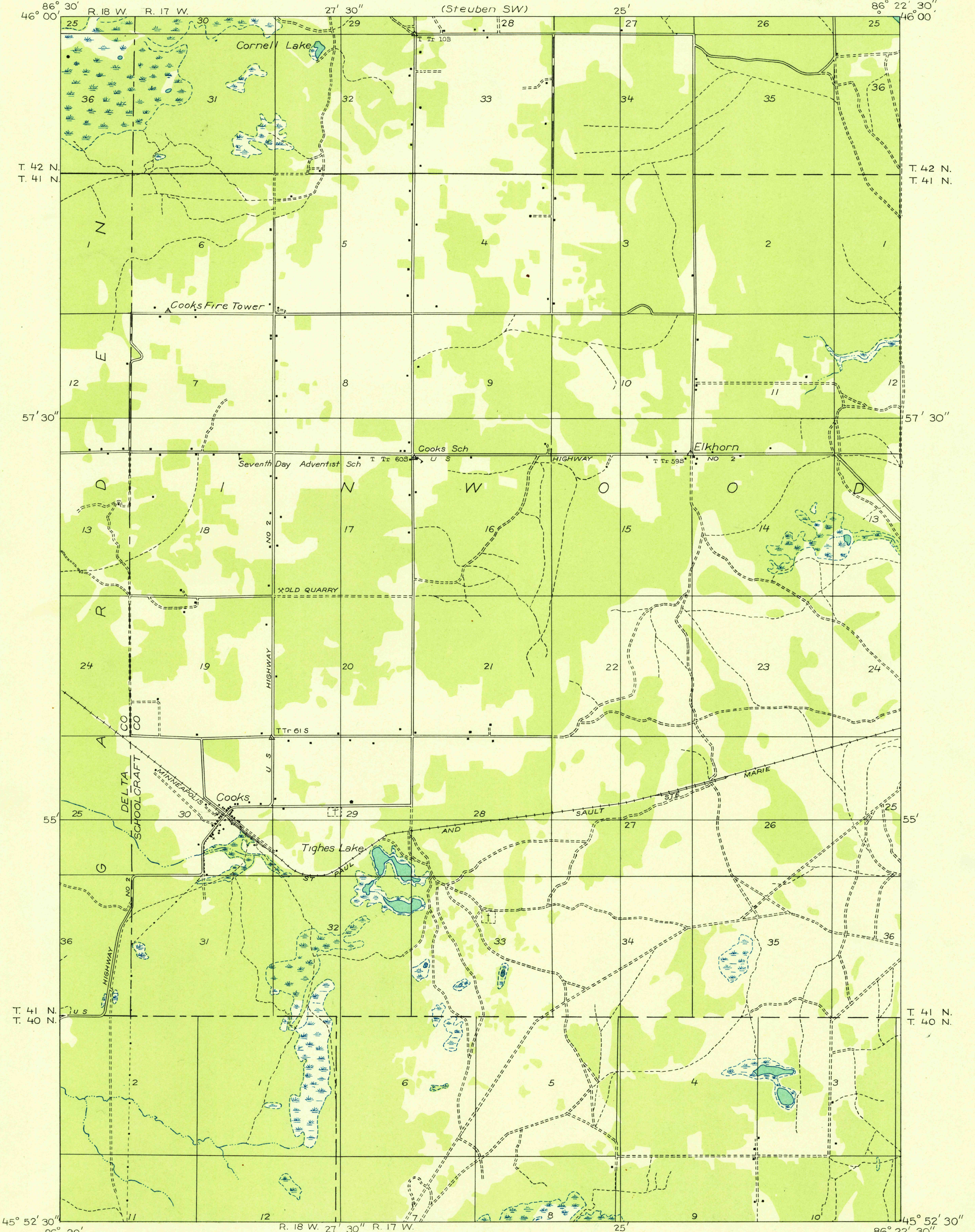


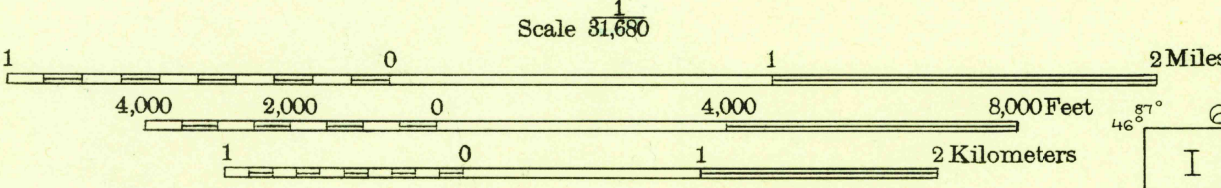
Advance sheet  
Subject to correction

(Steuben, SE)

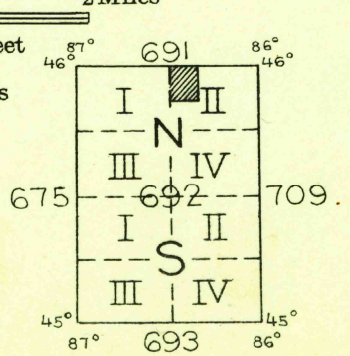


Glenn S. Smith, Division Engineer  
Compiled in part from aerial photographs  
taken by Air Corps, U. S. Army  
Control by U. S. Geological Survey  
Surveyed in 1931

TRUE NORTH  
MAGNETIC NORTH  
APPROXIMATE MEAN  
DECLINATION, 1931



Polyconic projection. North American datum



USGS  
Historical File  
Topographic Division

COOKS, MICH.  
NW QUARTER