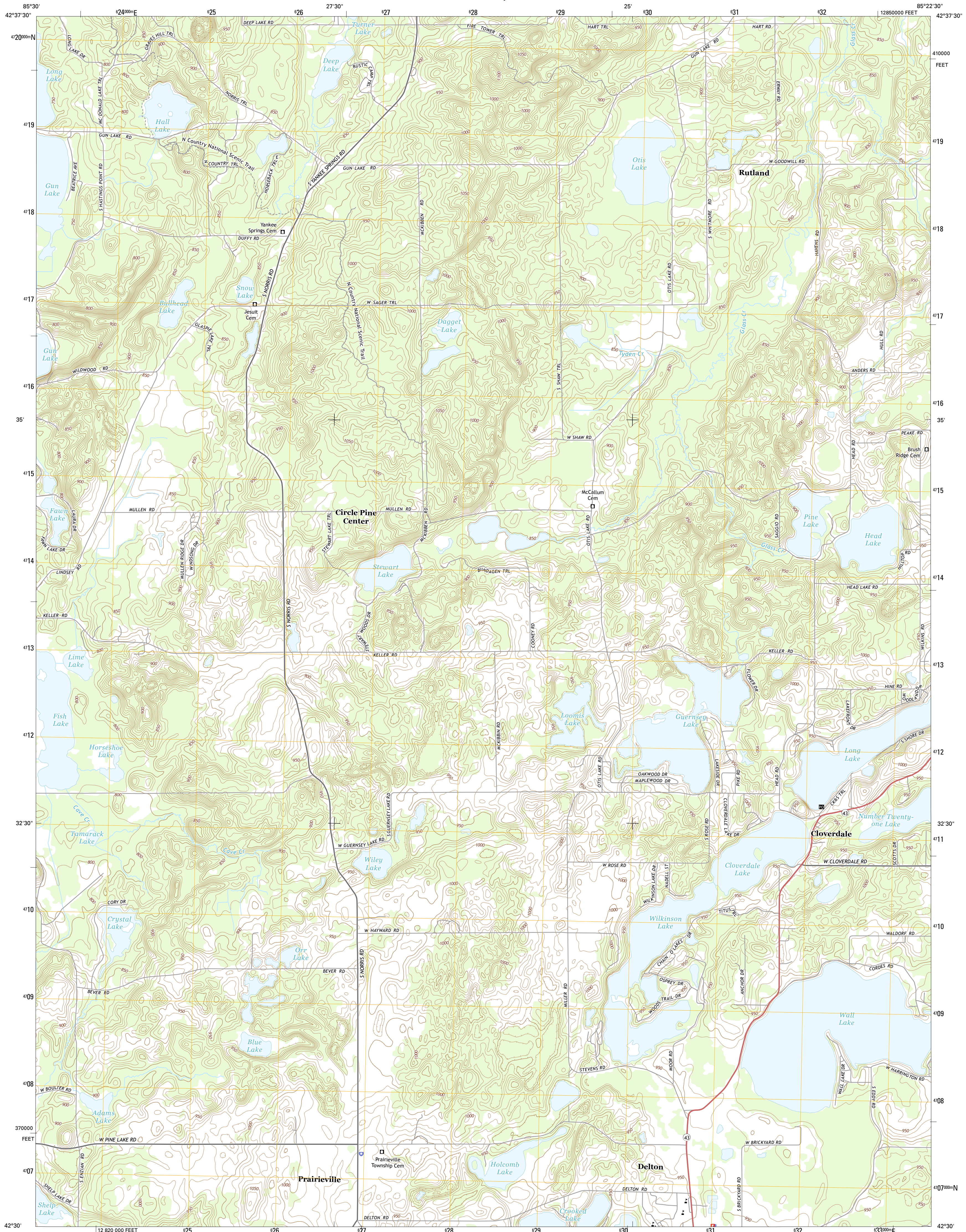




U.S. DEPARTMENT OF THE INTERIOR
U.S. GEOLOGICAL SURVEY



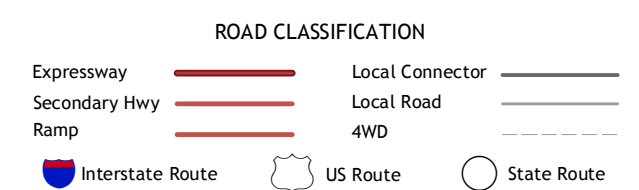
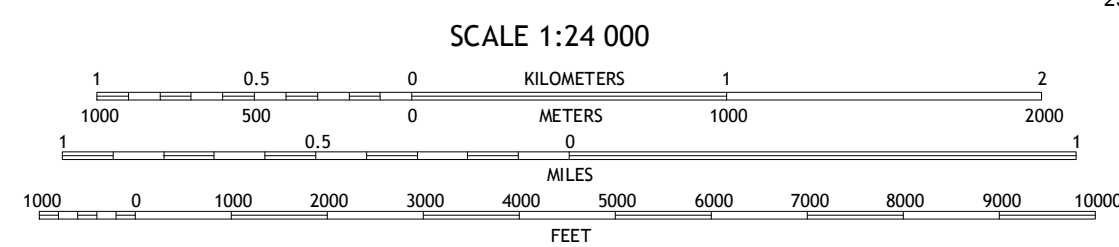
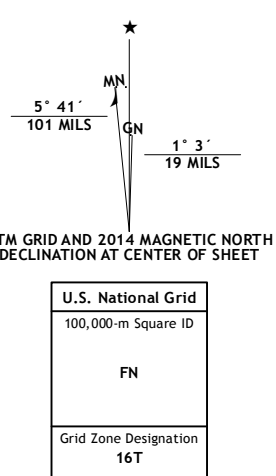
CLOVERDALE QUADRANGLE
MICHIGAN-BARRY CO.
7.5-MINUTE SERIES



Produced by the United States Geological Survey
North American Datum of 1983 (NAD83)
World Geodetic System of 1984 (WGS84), Projection and
1000-meter grid: Universal Transverse Mercator, Zone 16T
10 000-foot ticks: Michigan Coordinate System of 1983 (south zone)

This map is not a legal document. Boundaries may be generalized for this map scale. Private lands within government reservations may not be shown. Obtain permission before entering private lands.

Imagery: NAIIP, June 2012
Roads: HERE, ©2013
Names: GNIS, 2013
Hydrography: National Hydrography Dataset, 2012
Contours: National Elevation Dataset, 1999
Boundaries: Multiple sources; see metadata file 1972 - 2013
Public Land Survey System: BLM, 2011



1	2	3
4	5	
6	7	8

ADJOINING QUADRANGLES

CLOVERDALE, MI
2014

