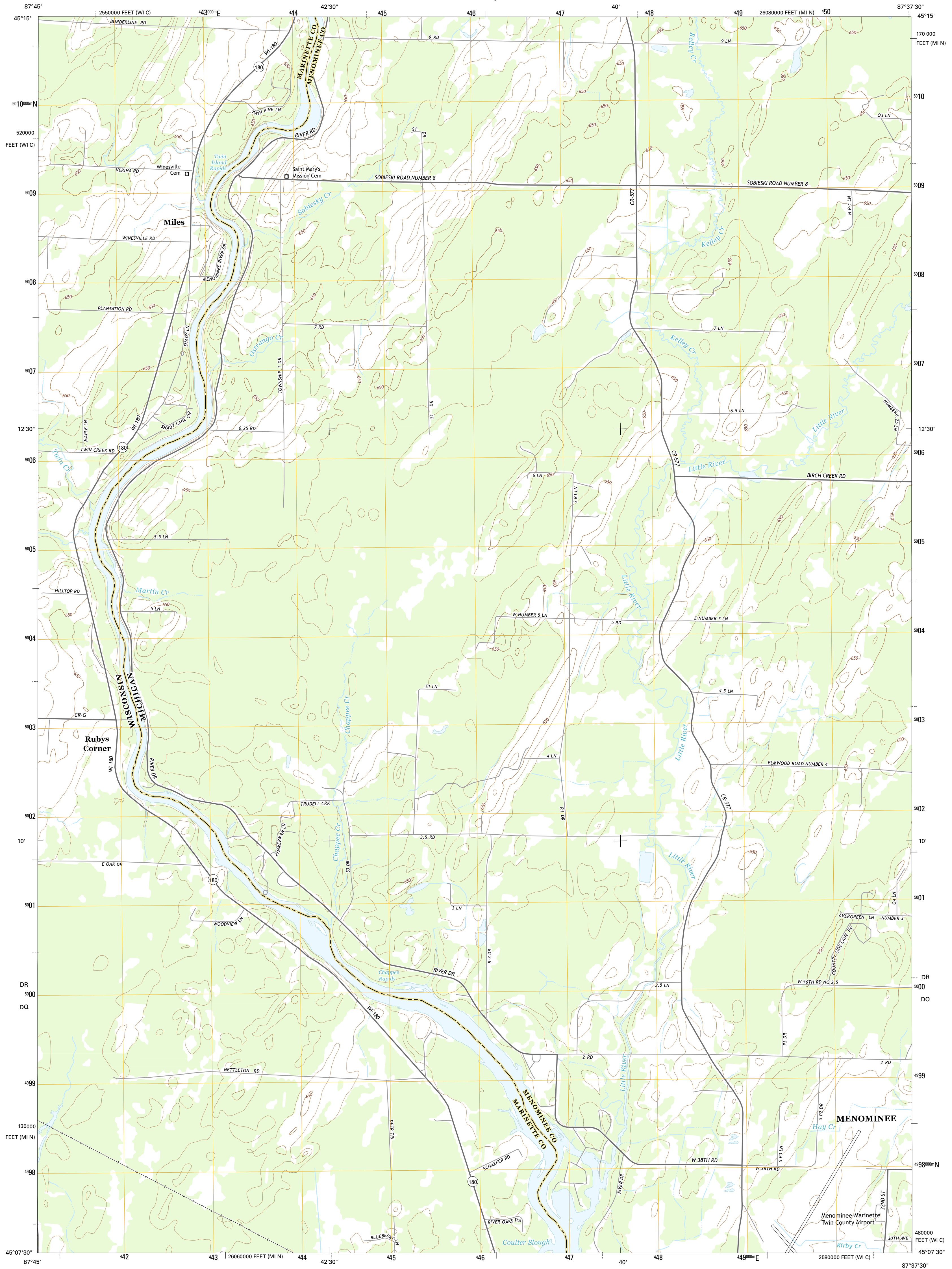




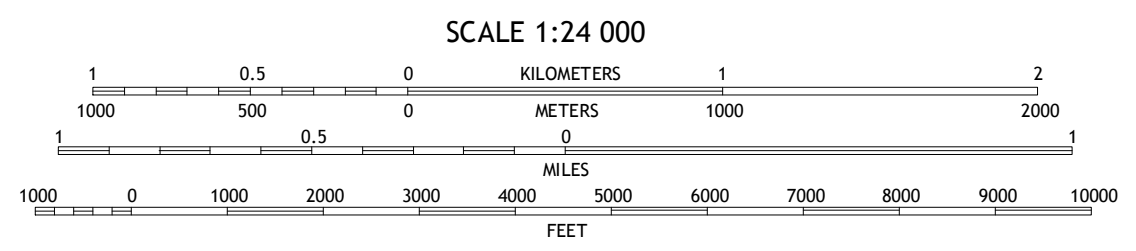
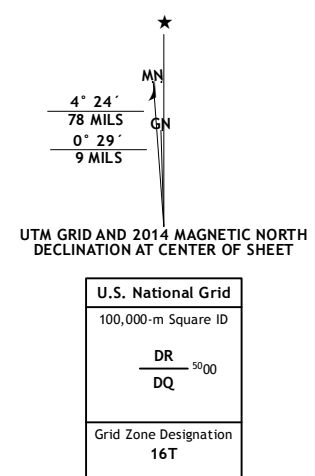
U.S. DEPARTMENT OF THE INTERIOR  
U.S. GEOLOGICAL SURVEY



CHAPPEE RAPIDS QUADRANGLE  
MICHIGAN-WISCONSIN  
7.5-MINUTE SERIES



**Produced by the United States Geological Survey**  
 North American Datum of 1983 (NAD83)  
 World Geodetic System of 1984 (WGS84). Projection and  
 1 000-meter grid: Universal Transverse Mercator, Zone 16T  
 10 000-foot ticks: Michigan Coordinate System of 1983 (north  
 zone), Wisconsin Coordinate System of 1983 (central zone)  
 This map is not a legal document. Boundaries may be  
 generalized for this map scale. Private lands within government  
 reservations may not be shown. Obtain permission before  
 entering private lands.  
 Imagery: NAIP, July 2012  
 Roads: HERE, ©2013  
 Names: GNIS, 2013  
 Hydrography: National Hydrography Dataset, 2012  
 Contours: National Elevation Dataset, 2008  
 Boundaries: Multiple sources; see metadata file 1972-2013  
 Public Land Survey System: BLM, 2011



ROAD CLASSIFICATION

Expressway	Local Connector
Secondary Hwy	Local Road
Ramp	4WD
Interstate Route	US Route
	State Route

ADJOINING QUADRANGLES

1	2	3
4	5	6
7	8	

1 Bear Point  
2 McAllister  
3 Wallace  
4 Porterfield  
5 Birch Creek  
6 Harmony  
7 Marquette West  
8 Marquette East

CHAPPEE RAPIDS, MI-WI  
2014

