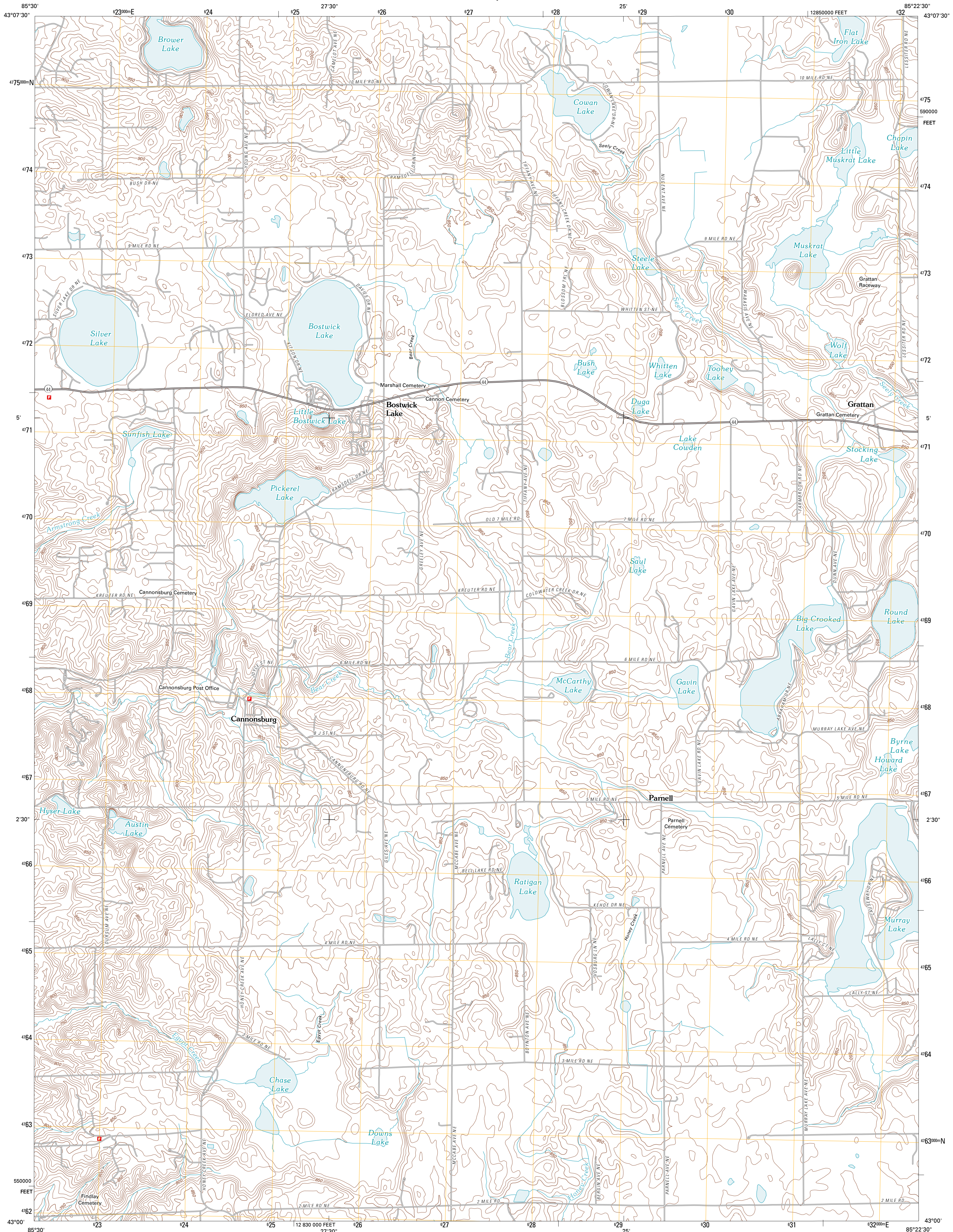




U.S. DEPARTMENT OF THE INTERIOR  
U. S. GEOLOGICAL SURVEY

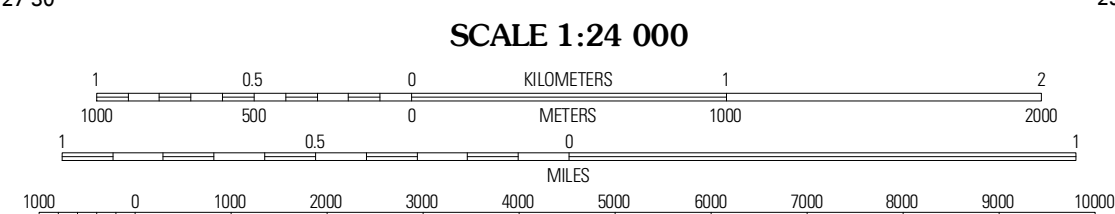
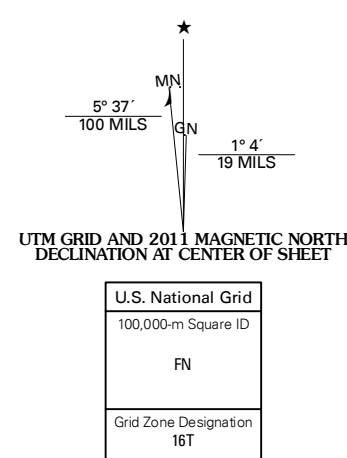


CANNONBURG QUADRANGLE  
MICHIGAN-KENT CO.  
7.5-MINUTE SERIES



Produced by the United States Geological Survey  
North American Datum of 1983 (NAD83)  
World Geodetic System of 1984 (WGS84). Projection and  
1 000-meter grid: Universal Transverse Mercator, Zone 16T  
10 000-foot ticks: Michigan Coordinate System of 1983  
(south zone)

Imagery.....NAIP, July 2009 - September 2009  
Roads.....©2006-2010 Tele Atlas  
Names.....©2010 GNS, 2010  
Hydrography.....National Hydrography Dataset, 2009  
Contours.....National Elevation Dataset, 2009  
Boundaries.....Census, IBWC, IBC, USGS, 1972 - 2010



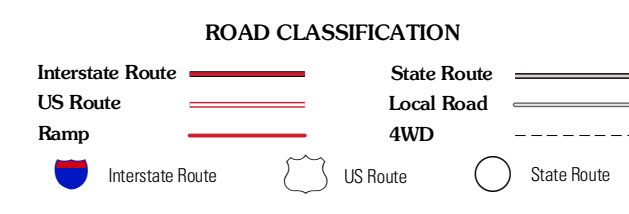
CONTOUR INTERVAL 10 FEET  
NORTH AMERICAN VERTICAL DATUM OF 1988  
This map was produced to conform with version 0.5.10  
of the USGS US Topo Product Standard.  
A metadata file associated with this product is draft version 0.5.16



QUADRANGLE LOCATION

Cedar Springs	Evans	Greenville West
Rockford	Cannonburg	Smyrna
Grand Rapids East	Cascade	Lowell

ADJOINING 7.5 QUADRANGLES



CANNONBURG, MI  
2011