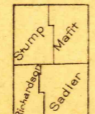


U. S. G. S.
FILE COPY
Inspection and Editing.

U. S. G. S.
FILE COPY
Inspection and Editing.

Woods
Brush

ENGRAVED 1920 BY U. S. G. S.
C. H. Birdseye, Chief Topographic Engineer.
W. H. Hamon, Geographer in charge.
Topography by C. L. Sadler, C. W. Stump, Jr., R. T. Maffit and
G. R. Richardson.
Control by Geo. T. Hawkins, J. H. Wilson, E. E. Harris, and
E. C. Bibbee.
Surveyed in 1919.



Scale 62500
4 Miles
5 Kilometers
Contour interval 5 feet.
Datum is mean sea level.

USGS
Historical File
Topographic Division

Polyconic projection, North American datum.

SEP 7 1921 3530

SURVEYED IN COOPERATION WITH THE STATE OF MICHIGAN.

BURT MICH.
Edition of 1921.