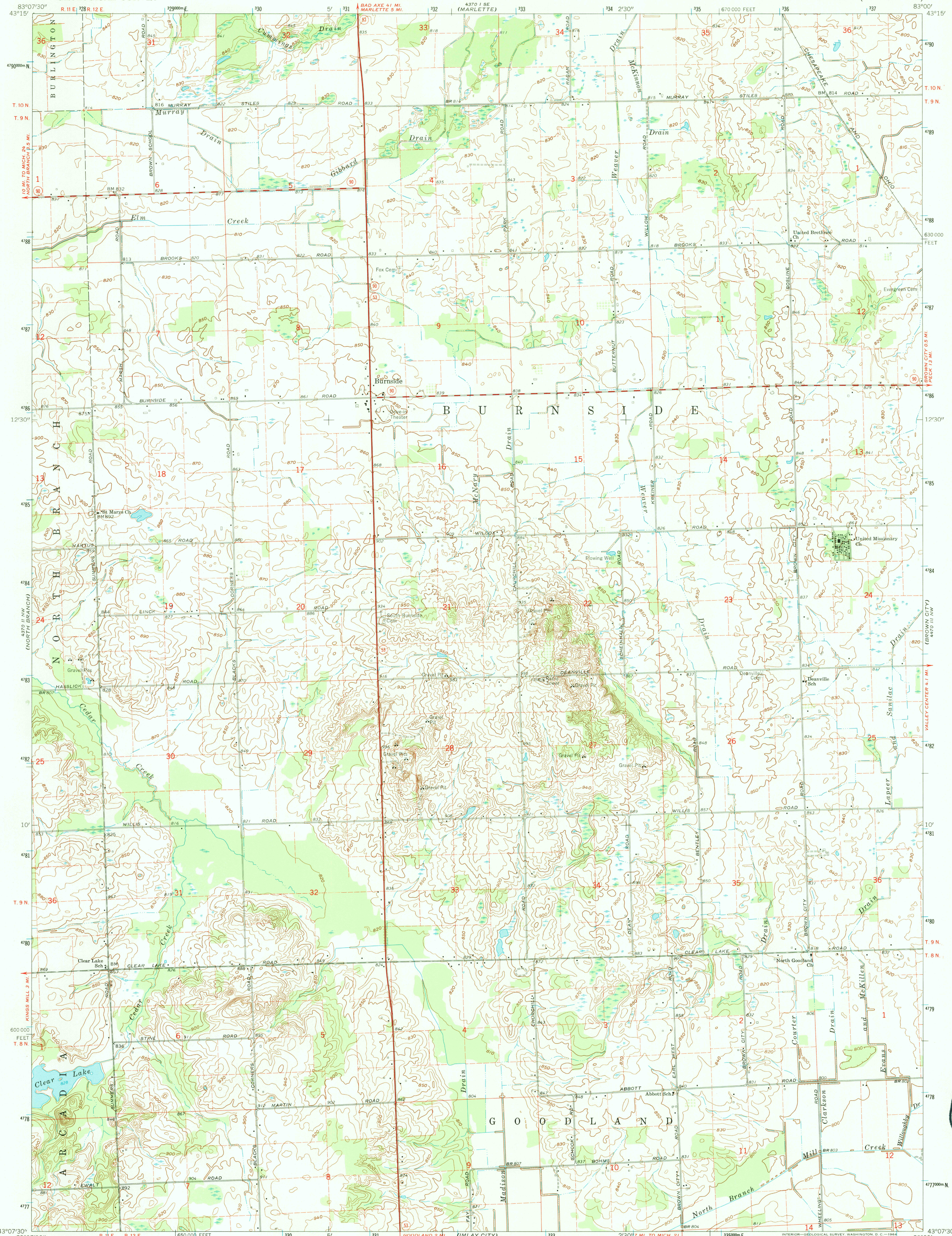


43°07'30" N
83°07'30" W

UNITED STATES
DEPARTMENT OF THE INTERIOR
GEOLOGICAL SURVEY

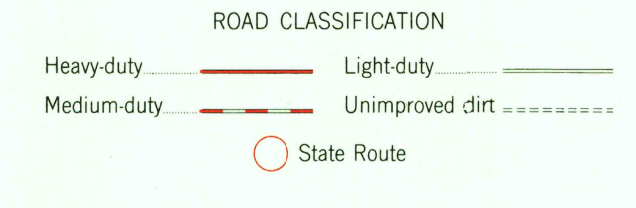
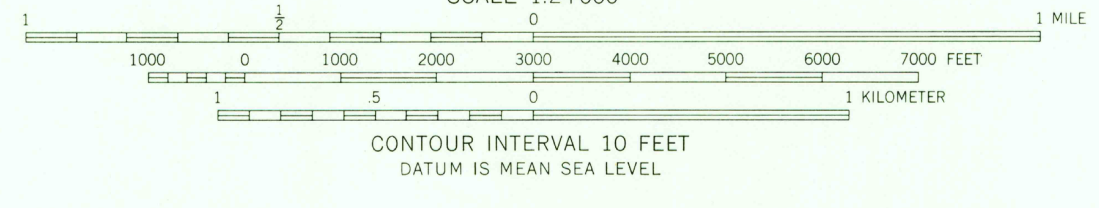
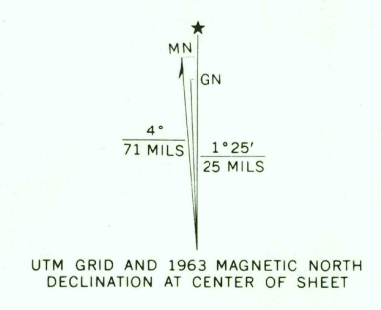
BURNSIDE QUADRANGLE
MICHIGAN-LAPEER CO.
7.5 MINUTE SERIES (TOPOGRAPHIC)

43°07'30" N
83°07'30" W



USGS AND HISTORICAL
MAP ARCHIVES
NOV 22 1995
REC'D FILE COPY

Mapped, edited, and published by the Geological Survey
Control by USGS and USC&GS
Topography by photogrammetric methods from aerial
photographs taken 1958-59 and planetable surveys 1963
Polyconic projection, 1927 North American datum
10,000-foot grid based on Michigan coordinate system, east zone
1000-meter Universal Transverse Mercator grid ticks,
zone 17, shown in blue
Fine red dashed lines indicate selected fence and field lines where
generally visible on aerial photographs. This information is unchecked



THIS MAP COMPLIES WITH NATIONAL MAP ACCURACY STANDARDS
FOR SALE BY U. S. GEOLOGICAL SURVEY, WASHINGTON 25, D. C.
A FOLDER DESCRIBING TOPOGRAPHIC MAPS AND SYMBOLS IS AVAILABLE ON REQUEST

BURNSIDE, MICH.
N4307.5-W8300/7.5
1963
AMS 4370 II NE-SERIES V862

659571-109000
9 78067125637