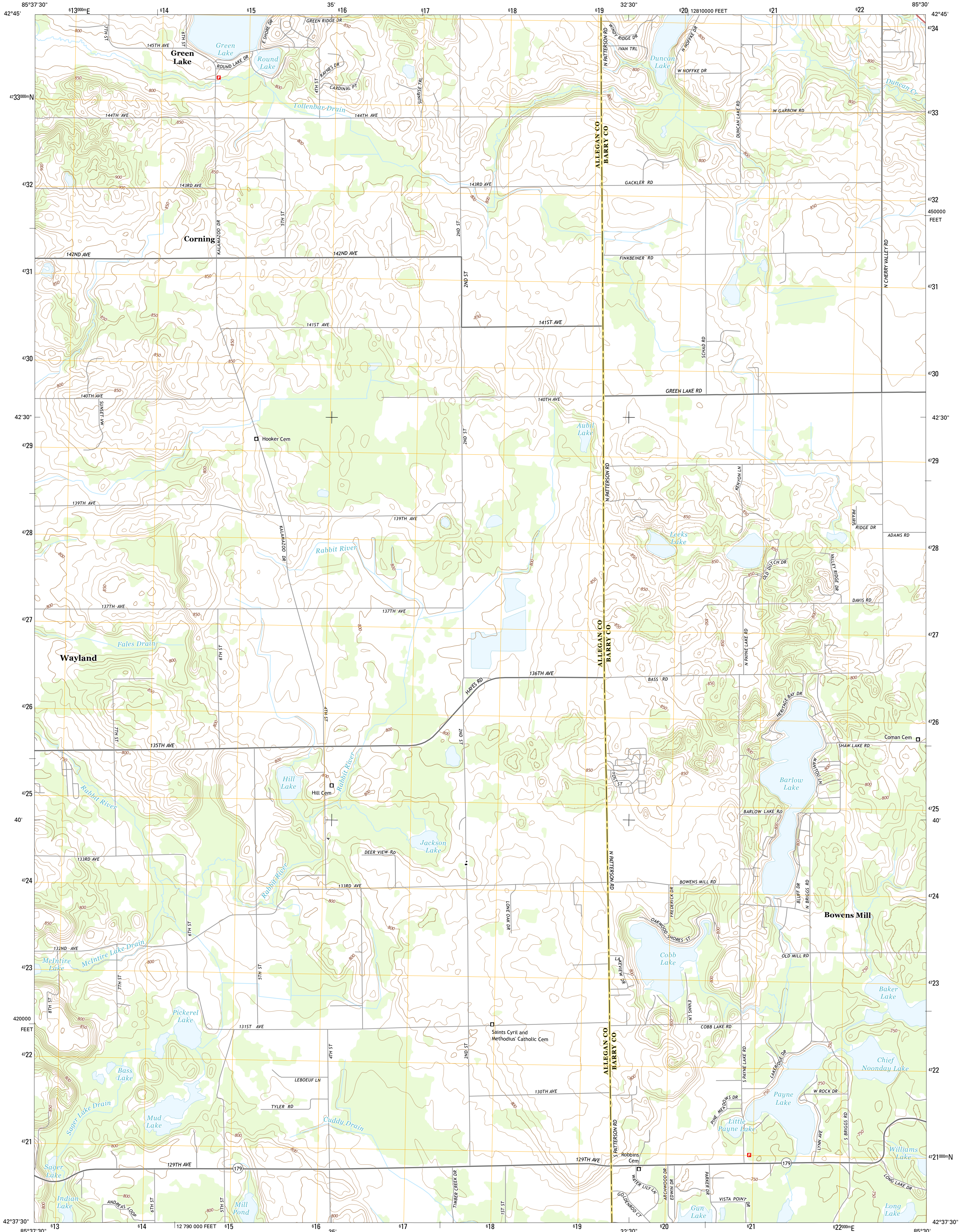




U.S. DEPARTMENT OF THE INTERIOR  
U.S. GEOLOGICAL SURVEY



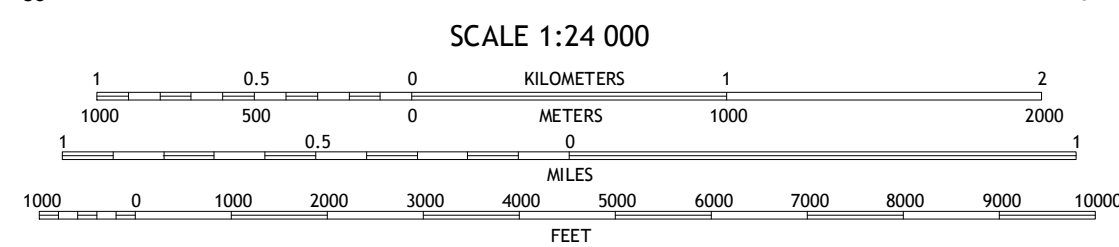
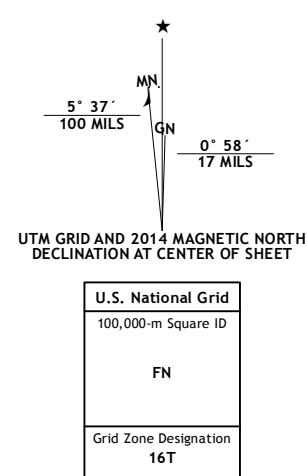
BOWENS MILL QUADRANGLE  
MICHIGAN  
7.5-MINUTE SERIES



Produced by the United States Geological Survey  
North American Datum of 1983 (NAD83)  
World Geodetic System of 1984 (WGS84), Projection and  
1000-meter grid: Universal Transverse Mercator, Zone 16T  
10 000-foot ticks: Michigan Coordinate System of 1983 (south zone)

This map is not a legal document. Boundaries may be generalized for this map scale. Private lands within government reservations may not be shown. Obtain permission before entering private lands.

Imagery: NAIP, June 2012  
Roads: HERE, ©2013  
Names: GNS, 2013  
Hydrography: National Hydrography Dataset, 2012  
Contours: National Elevation Dataset, 1999  
Boundaries: Multiple sources; see metadata file 1972 - 2013  
Public Land Survey System: BLM, 2011

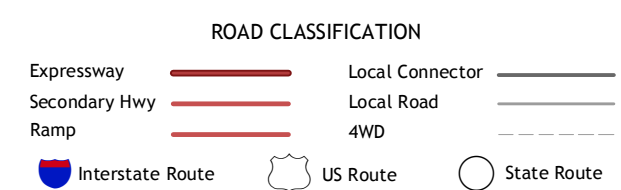


CONTOUR INTERVAL 10 FEET  
NORTH AMERICAN VERTICAL DATUM OF 1988

This map was produced to conform with the National Geospatial Program US Topo Product Standard, 2011. A metadata file associated with this product is draft version 0.6.16.



QUADRANGLE LOCATION



1	2	3
4	5	6
7	8	

1 Cutleville  
2 Caledonia  
3 Alto  
4 Wayland  
5 Middleville  
6 Martin  
7 Orangethville  
8 Cloverdale

BOWENS MILL, MI  
2014

