

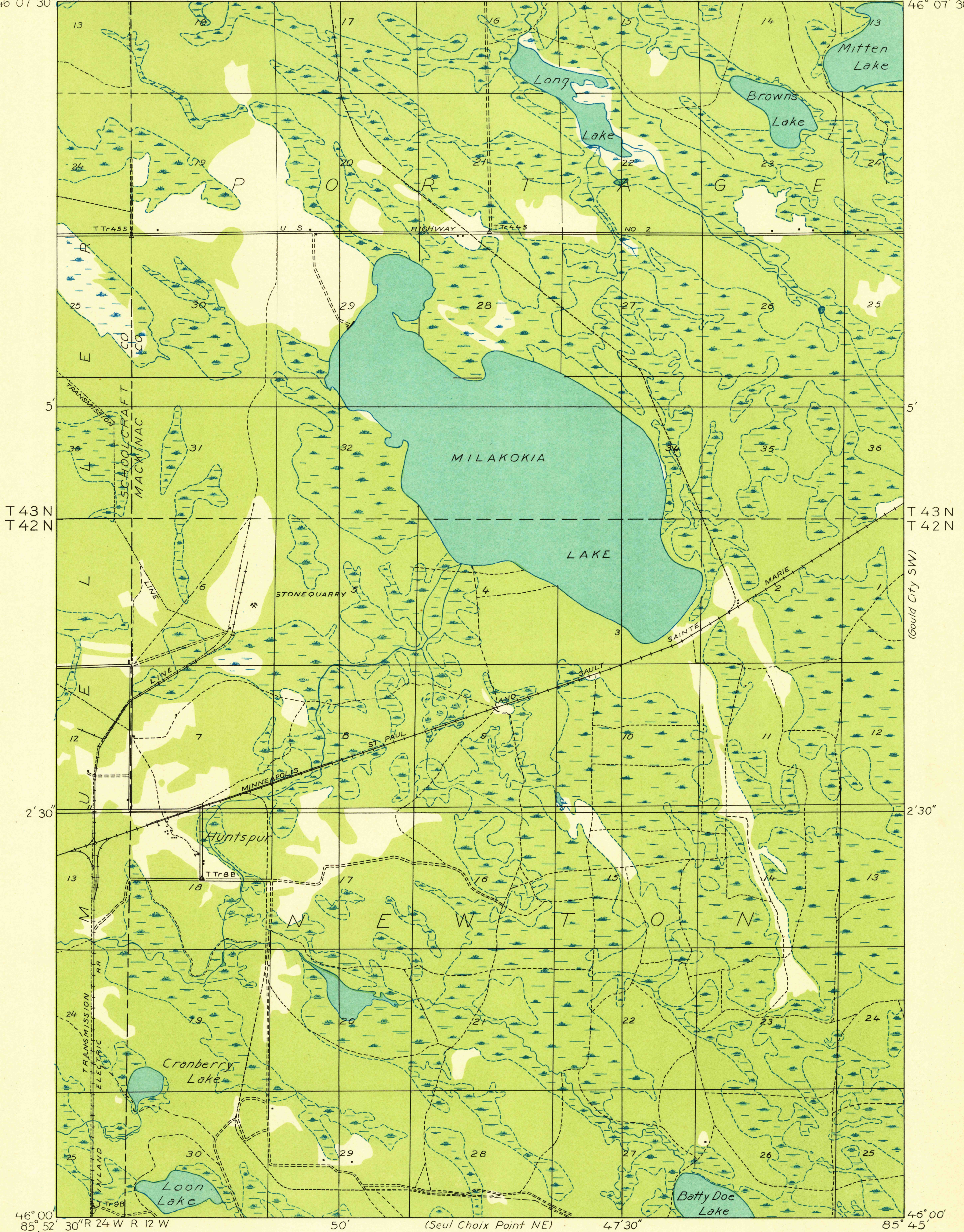
Advance sheet
Subject to correction

85° 52' 30" R 24 W R 12 W
46° 07' 30"

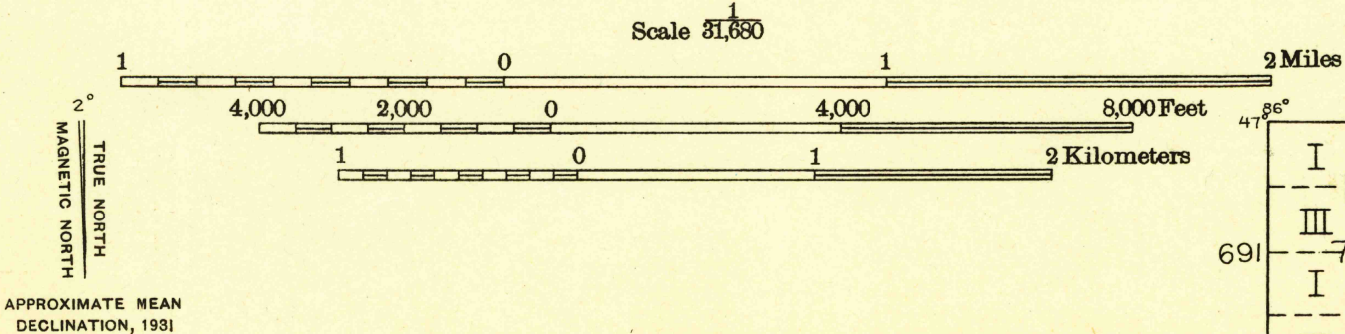
50'

47' 30"

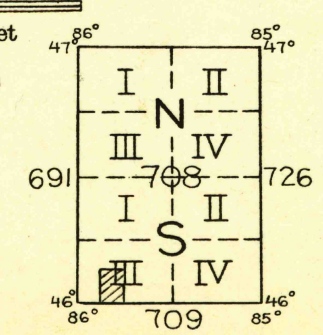
85° 45' 46° 07' 30"



Glenn S. Smith, Division Engineer
Compiled in part from aerial photographs
taken by Air Corps, U. S. Army
Control by U. S. Geological Survey
Surveyed in 1931



Polyconic projection. North American datum



USGS
Historical File
Topographic Division

BLANEY, MICH
S E

(Seul Choix Point NW)

(Seul Choix Point SW)