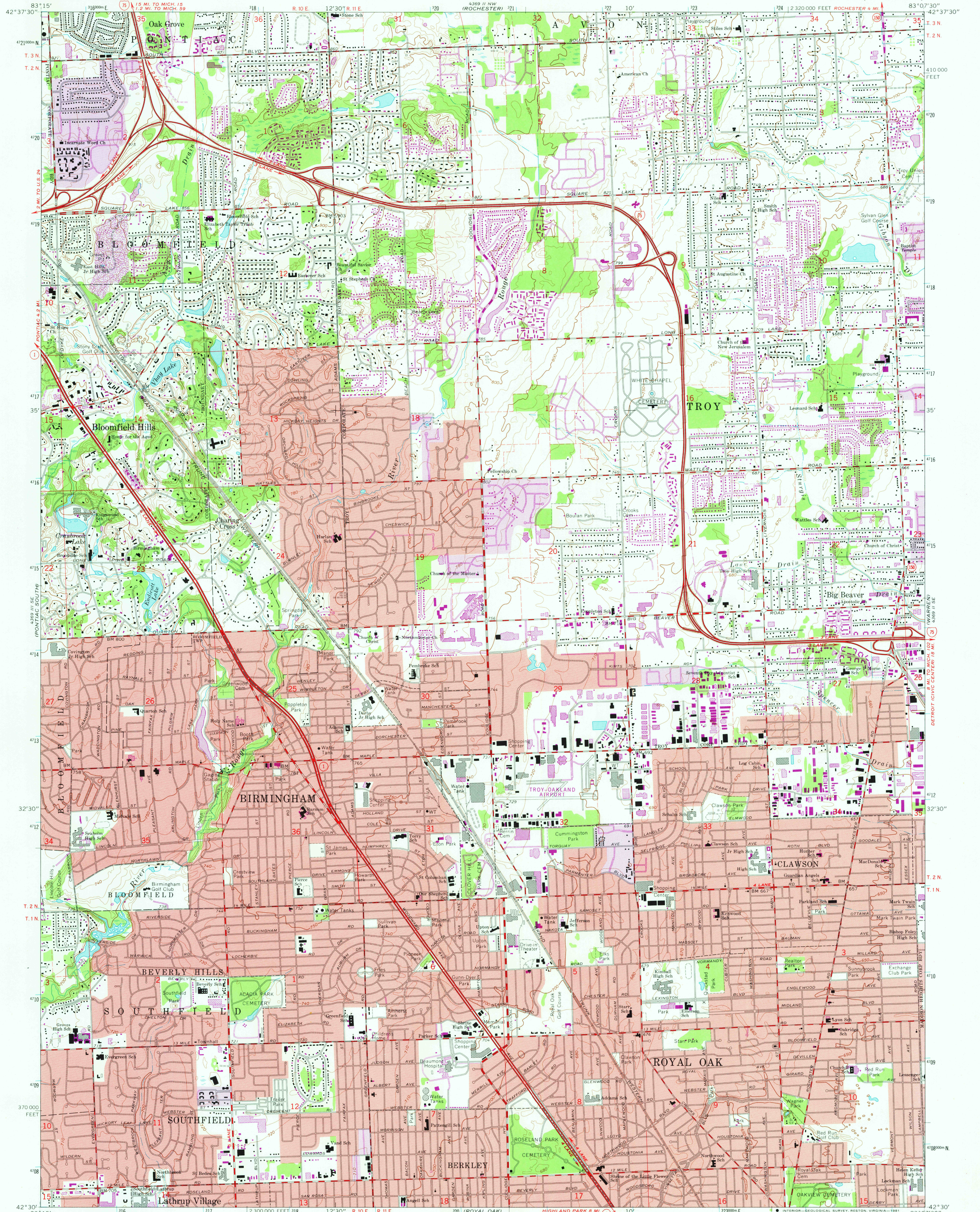
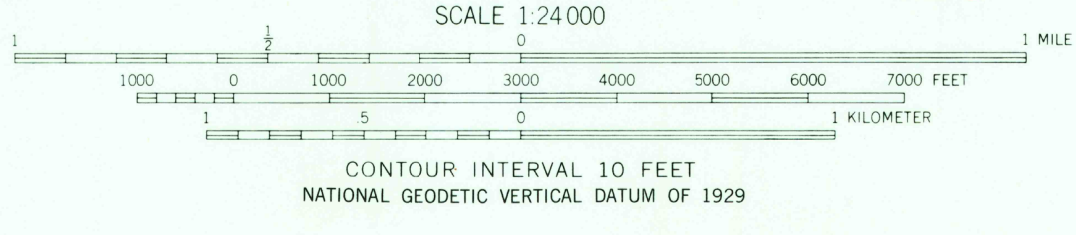


UNITED STATES
DEPARTMENT OF THE INTERIOR
GEOLOGICAL SURVEY

BIRMINGHAM QUADRANGLE
MICHIGAN—OAKLAND CO.
7.5 MINUTE SERIES (TOPOGRAPHIC)



Mapped, edited, and published by the Geological Survey in cooperation with State of Michigan agencies
Control by USGS and USC&GS
Planimetry by photogrammetric methods from aerial photographs
Topography by planetable surveys 1942-1943
Revised from aerial photographs taken 1967. Field checked 1968
Polyconic projection. 1927 North American datum
10,000-foot grid based on Michigan coordinate system, south zone
1000-meter Universal Transverse Mercator grid ticks, zone 17, shown in blue
Red tint indicates areas in which only landmark buildings are shown
To place on the predicted North American Datum 1983
move the projection lines 7 meters west as shown by dashed corner ticks



ROAD CLASSIFICATION

Primary highway, all weather, hard surface	Light-duty road, all weather, improved surface
Secondary highway, all weather, hard surface	Unimproved road, fair or dry weather
Interstate Route	U. S. Route
	State Route

THIS MAP COMPLIES WITH NATIONAL MAP ACCURACY STANDARDS FOR SALE BY U. S. GEOLOGICAL SURVEY, RESTON, VIRGINIA 22092 AND BY THE GEOLOGICAL SURVEY DIVISION MICHIGAN DEPARTMENT OF NATURAL RESOURCES, LANSING, MICHIGAN 48909 A FOLDER DESCRIBING TOPOGRAPHIC MAPS AND SYMBOLS IS AVAILABLE ON REQUEST

Revisions shown in purple compiled from aerial photographs taken 1973 and 1981. Map edited 1981
This information not field checked
Purple tint indicates extension of urban area

BIRMINGHAM, MICH.
N4230—W8307.5/7.5
1968
PHOTOREVISED 1981
DMA 4369 II SW—SERIES V862

