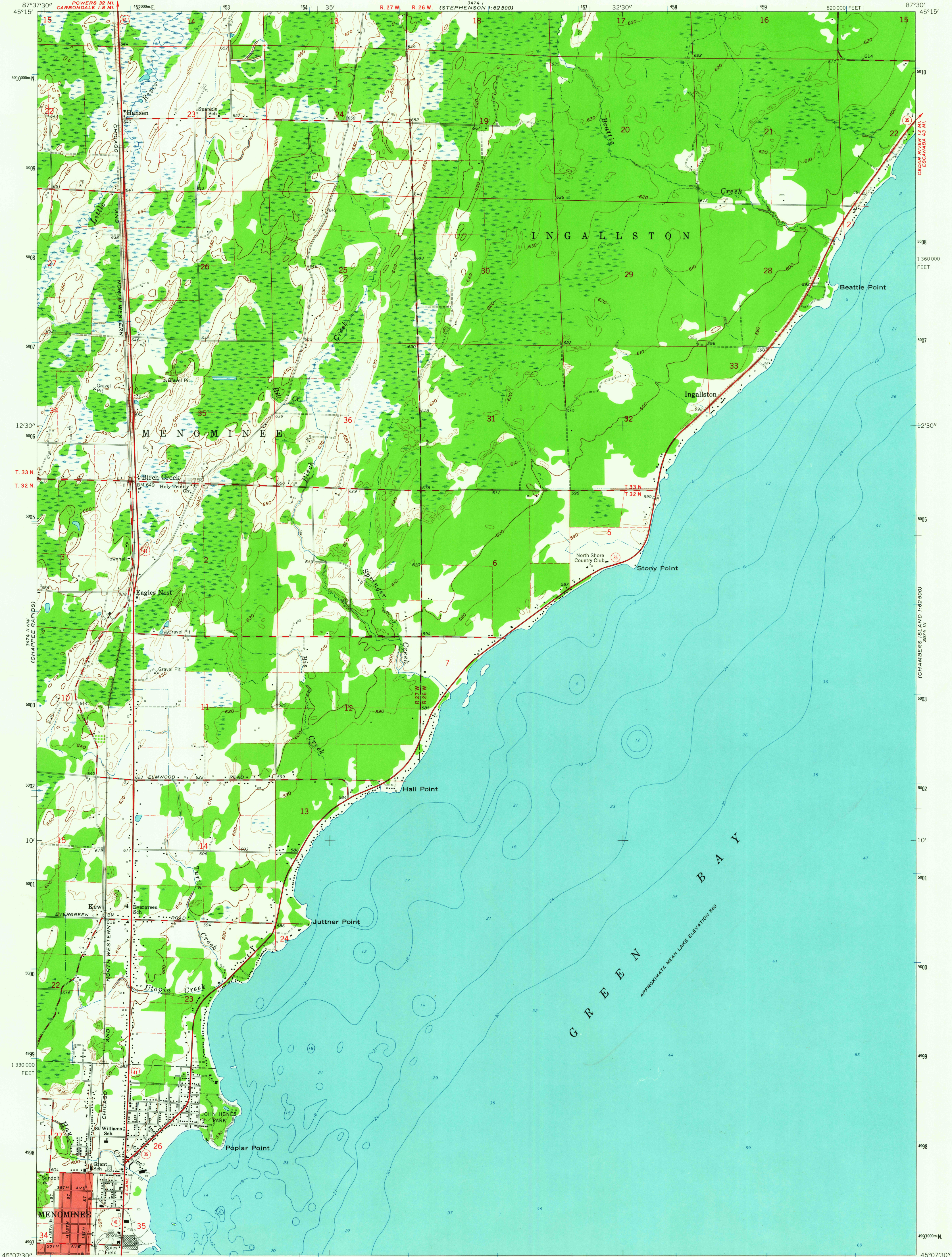


UNITED STATES  
DEPARTMENT OF THE INTERIOR  
GEOLOGICAL SURVEY

BIRCH CREEK QUADRANGLE  
MICHIGAN—MENOMINEE CO.  
7.5 MINUTE SERIES (TOPOGRAPHIC)  
NE/4 MARINETTE 15' QUADRANGLE

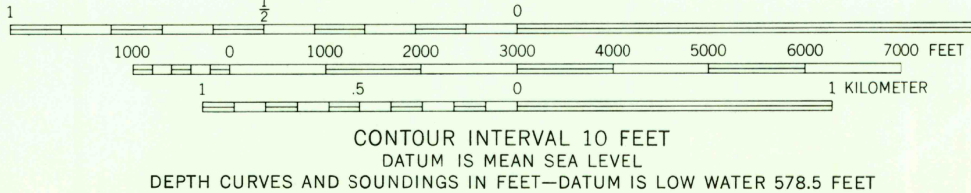
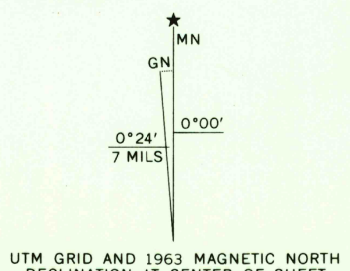


Mapped, edited, and published by the Geological Survey  
Control by USGS and USC&GS

Topography by photogrammetric methods from aerial photographs taken 1954. Field checked 1963  
Selected hydrographic data compiled from U. S. Lake Survey Charts 702 and 723 (1960). This information is not intended for navigational purposes

Polyconic projection. 1927 North American datum  
10,000-foot grid based on Michigan coordinate system, west zone  
1000-meter Universal Transverse Mercator grid ticks, zone 16, shown in blue

Red tint indicates area in which only landmark buildings are shown  
Fine red dashed lines indicate selected fence and field lines where generally visible on aerial photographs. This information is unchecked



CONTOUR INTERVAL 10 FEET  
DATUM IS MEAN SEA LEVEL  
DEPTH CURVES AND SOUNDINGS IN FEET—DATUM IS LOW WATER 578.5 FEET

THIS MAP COMPLIES WITH NATIONAL MAP ACCURACY STANDARDS  
FOR SALE BY U. S. GEOLOGICAL SURVEY, WASHINGTON 25, D. C.  
A FOLDER DESCRIBING TOPOGRAPHIC MAPS AND SYMBOLS IS AVAILABLE ON REQUEST

Historical File  
Topographic Division



ROAD CLASSIFICATION

Heavy-duty	Light-duty
Medium-duty	Unimproved dirt
U. S. Route	State Route

BIRCH CREEK, MICH.  
NE/4 MARINETTE 15' QUADRANGLE  
N4507.5—W8730/7.5  
1963  
AMS 3474 II NE—SERIES V862

SEP 2 1 1964 2685  
U.S.G.S.  
FILE COPY  
TOPOGRAPHIC DIVISION