

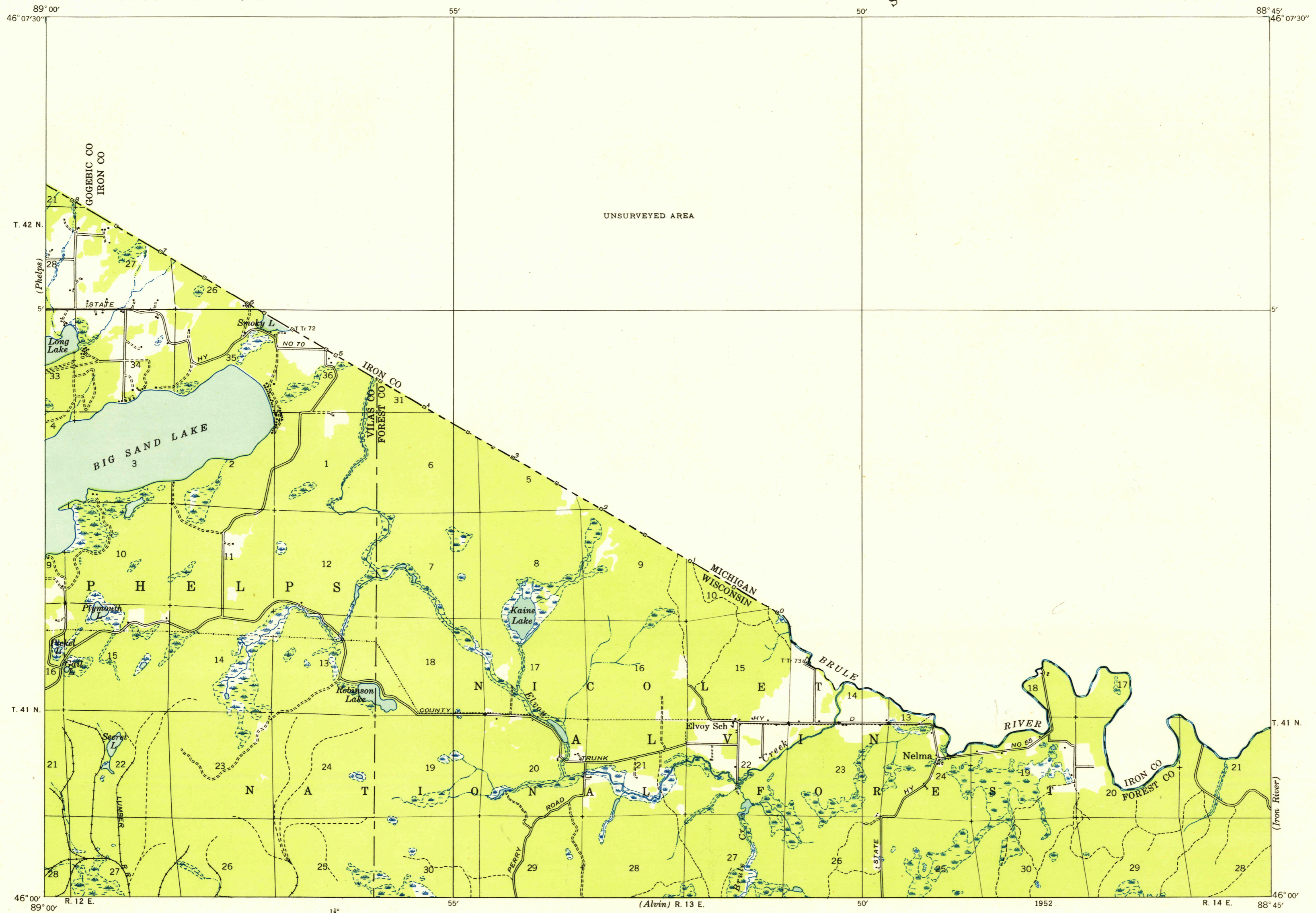
U. S. G. S.
FILE COPY
Inspection and Editing.

UNITED STATES
DEPARTMENT OF THE INTERIOR
GEOLOGICAL SURVEY

STATE OF WISCONSIN

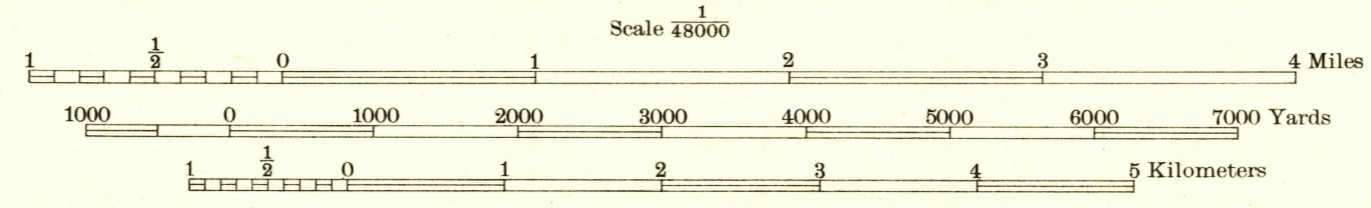
MICHIGAN-WISCONSIN
BEECHWOOD QUADRANGLE
15-MINUTE SERIES

Advance sheet
Subject to correction



(Three Lakes)
Glenn S. Smith, Division Engineer
Compiled by Geological Survey
from aerial photographs
Field examination in 1938

TRUE NORTH
MAGNETIC NORTH
14°
APPROXIMATE MEAN
DECLINATION, 1938



USGS
Historical File
Topographic Division

Polyconic projection. 1927 North American datum (Long Lake)

BEECHWOOD, MICH.-WIS.
1938
N 4600-W 8845/7.5X15

FOR SALE BY U. S. GEOLOGICAL SURVEY, WASHINGTON 25, D. C.
A FOLDER DESCRIBING TOPOGRAPHIC MAPS AND SYMBOLS IS AVAILABLE ON REQUEST

U. S. G. S.
FILE COPY
Inspection and Editing.