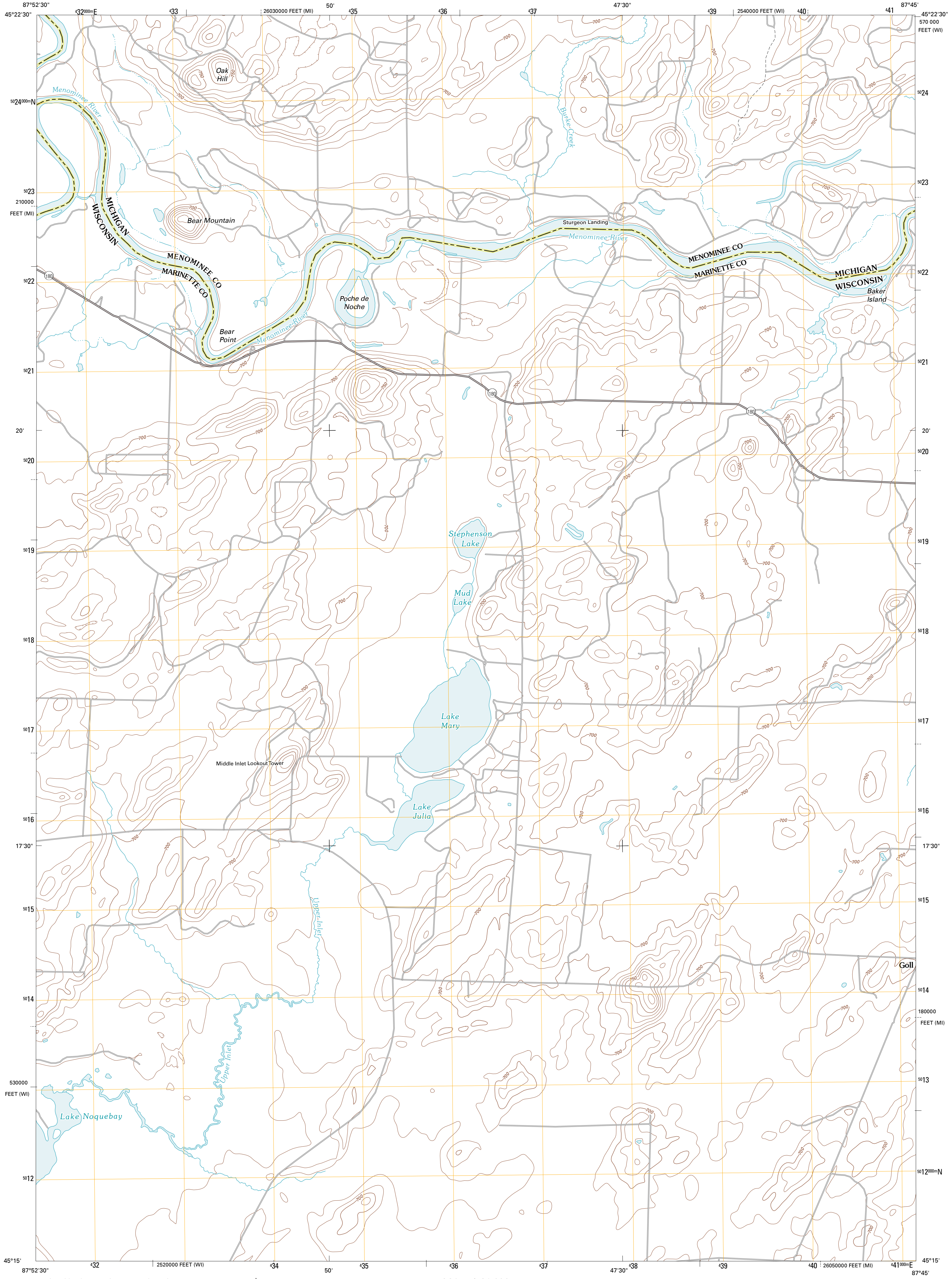




U.S. DEPARTMENT OF THE INTERIOR
U. S. GEOLOGICAL SURVEY

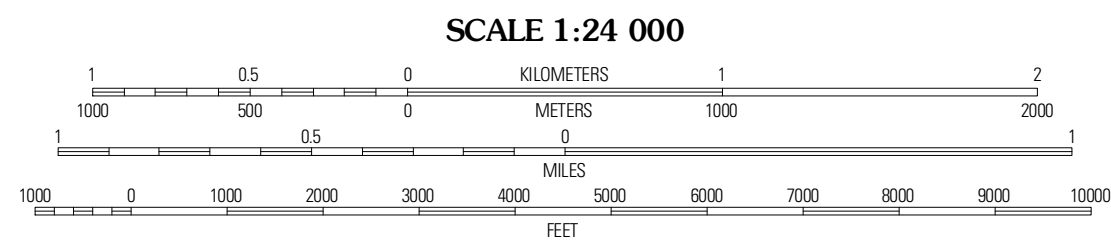
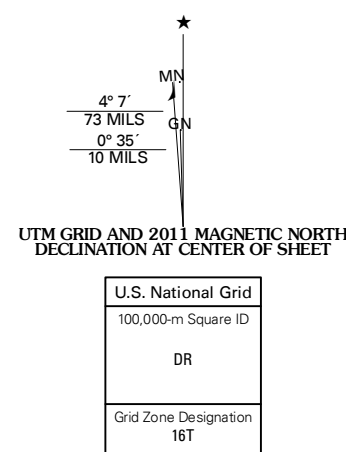


BEAR POINT QUADRANGLE
MICHIGAN-WISCONSIN
7.5-MINUTE SERIES



Produced by the United States Geological Survey
North American Datum of 1983 (NAD83)
World Geodetic System of 1984 (WGS84). Projection and
1 000 meter grid: Universal Transverse Mercator, Zone 16T
10 000-foot ticks: Wisconsin Coordinate System of 1983
(central zone), Michigan Coordinate System of 1983 (north
zone)

Imagery.....NAIP, July 2008
Roads.....©2006-2010 Tele Atlas
Names.....National Hydrography Dataset, 2010
Hydrography.....National Hydrography Dataset, 2008
Contours.....National Elevation Dataset, 1998
Boundaries.....Census, IBWC, IBC, USGS, 1972 - 2010



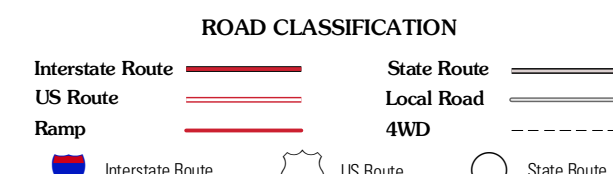
CONTOUR INTERVAL 10 FEET
NORTH AMERICAN VERTICAL DATUM OF 1988

This map was produced to conform with version 0.5.10
of the USGS US Topo Product Standard.
A metadata file associated with this product is draft version 0.5.16



QUADRANGLE LOCATION

Wausaukee North	Resort Lake	Swanson
Wausaukee South	Bear Point	McAllister
Loomis	Porterfield	Chappes Rapids



BEAR POINT, MI-WI
2011