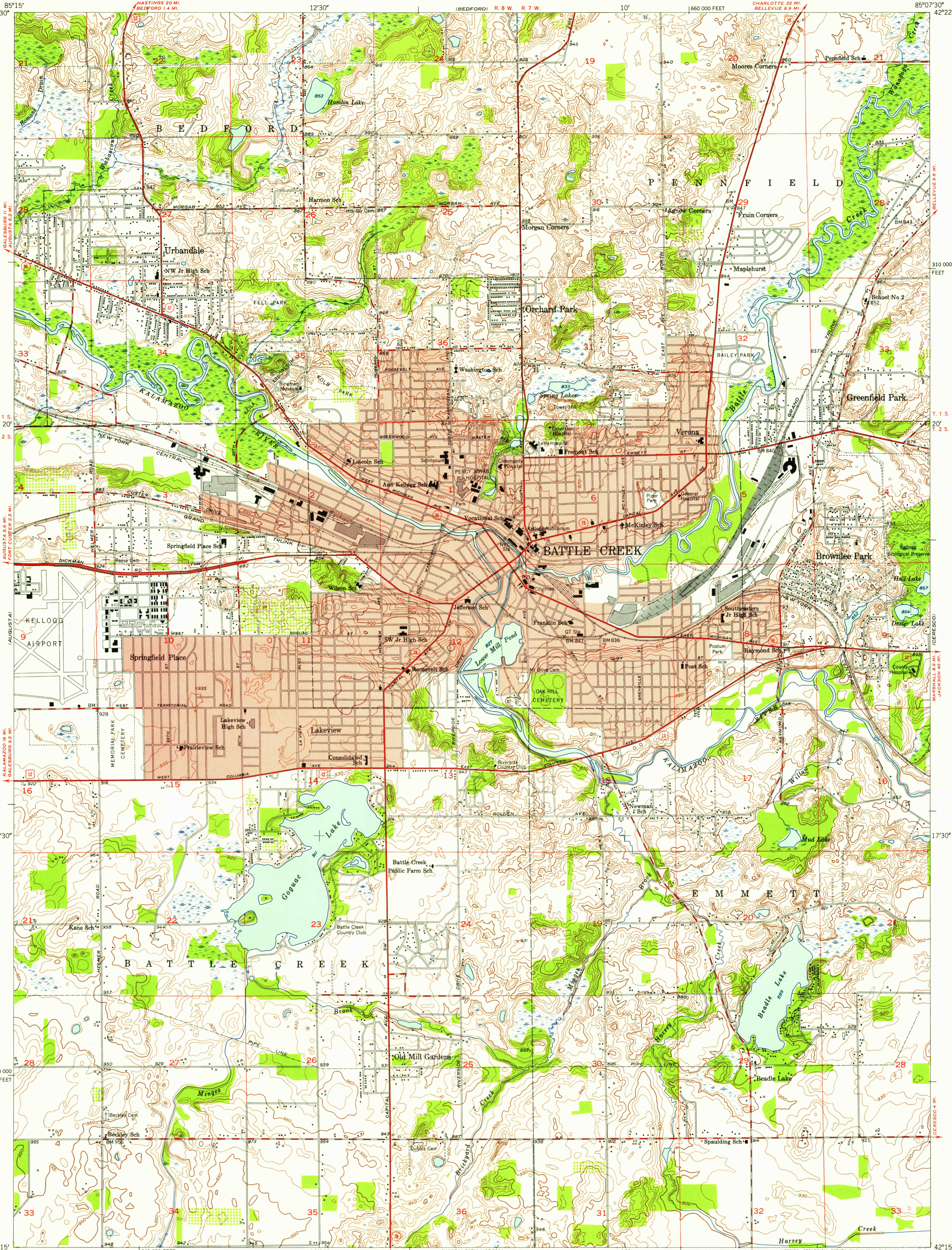


U.S.G.S.
FILE COPY
TOPOGRAPHIC DIVISION

U.S.G.S.
FILE COPY
TOPOGRAPHIC DIVISION



Mapped, edited, and published by the Geological Survey

Control by USGS and USC&GS

Culture and drainage in part compiled from aerial photographs taken 1946. Topography by plane-table surveys 1947

Polyconic projection. 1927 North American datum 10,000-foot grid based on Michigan coordinate system, central zone

Red tint indicates areas in which only landmark buildings are shown

APPROXIMATE MEAN DECLINATION, 1947



SCALE 1:24,000



CONTOUR INTERVAL 10 FEET
DATUM IS MEAN SEA LEVEL

USGS
Historical File
Topographic Division

ROAD CLASSIFICATION	
Heavy-duty	4 LANE 6 LANE
Medium-duty	2 LANE 4 LANE
Light-duty	Unimproved dirt
U.S. Route	State Route



BATTLE CREEK, MICH.
SW/4 BATTLE CREEK 15' QUADRANGLE
N4215-W8507.5/7.5

1947

THIS MAP COMPLIES WITH NATIONAL MAP ACCURACY STANDARDS
FOR SALE BY U. S. GEOLOGICAL SURVEY, WASHINGTON 25, D. C.
A FOLDER DESCRIBING TOPOGRAPHIC MAPS AND SYMBOLS IS AVAILABLE ON REQUEST