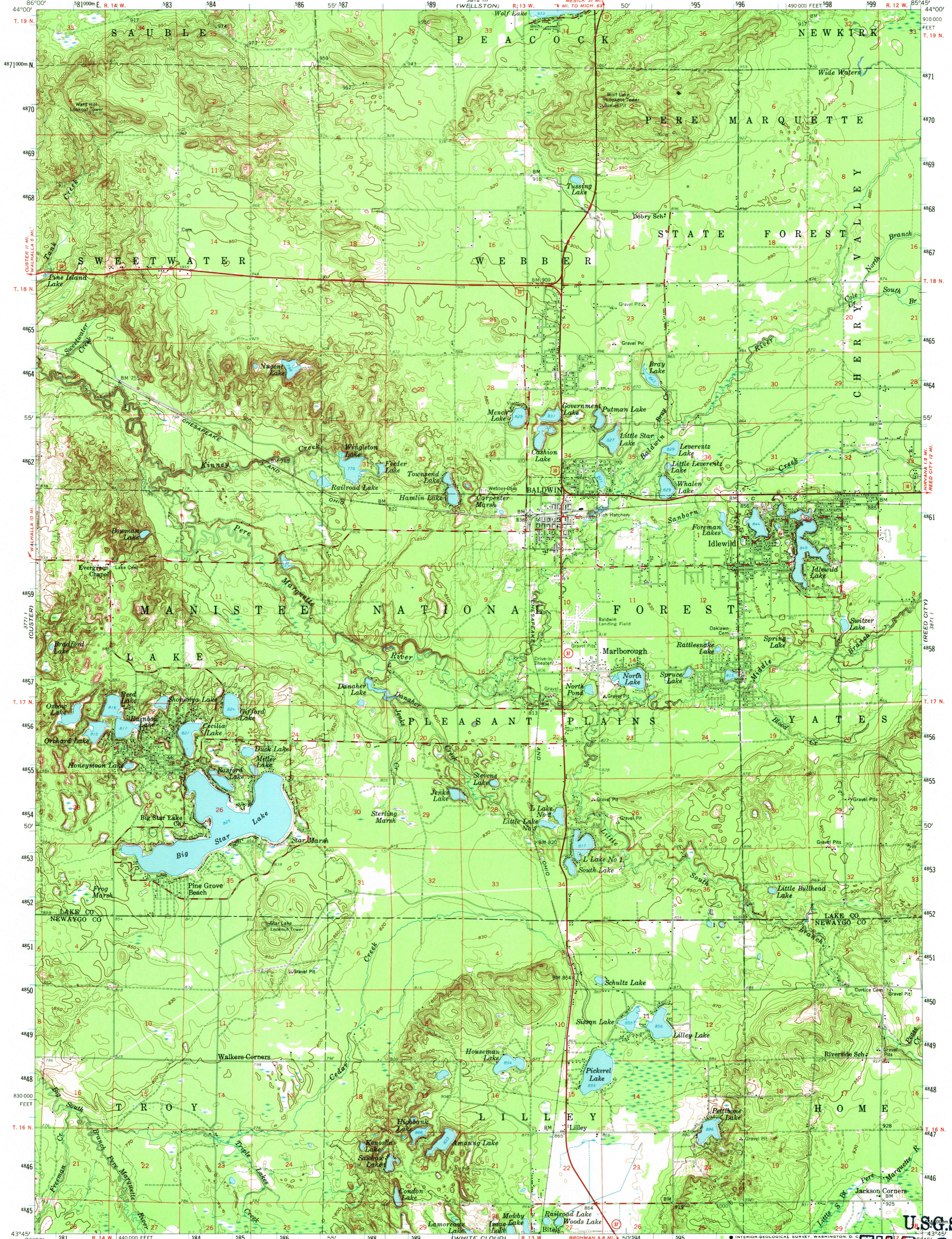


3772 II (FREESOLA)

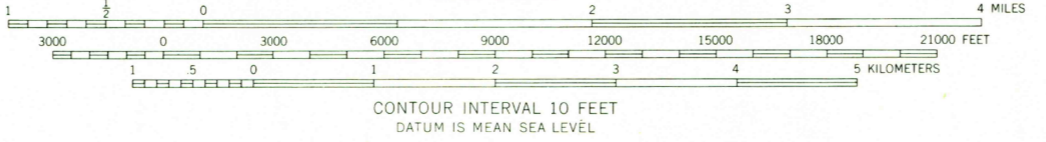
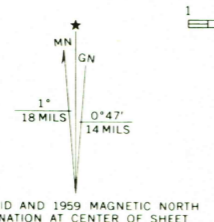
UNITED STATES  
DEPARTMENT OF THE INTERIOR  
GEOLOGICAL SURVEY

BALDWIN QUADRANGLE  
MICHIGAN  
15 MINUTE SERIES (TOPOGRAPHIC)

3872 II (LUTHER)



Mapped, edited, and published by the Geological Survey  
Control by USGS and USC&GS  
Topography from aerial photographs by photogrammetric methods  
Aerial photographs taken 1954-1955. Field check 1959  
Polyconic projection. 1927 North American datum  
10,000-foot grid based on Michigan coordinate system, central zone  
1000-meter Universal Transverse Mercator grid ticks,  
zone 16, shown in blue



USGS  
Historical File  
Topographic Division  
ROAD CLASSIFICATION  
Heavy-duty  
Medium-duty  
Light  
Unimproved dirt  
U.S. Route  
State Route



THIS MAP COMPLIES WITH NATIONAL MAP ACCURACY STANDARDS  
FOR SALE BY U.S. GEOLOGICAL SURVEY, WASHINGTON, D. C. 20242  
A FOLDER DESCRIBING TOPOGRAPHIC MAPS AND SYMBOLS IS AVAILABLE ON REQUEST

BALDWIN, MICH.  
N 4345-W 8545/15

1959

AMS 3871 IV-SERIES V762

USGS  
5015 COPY  
TOPOGRAPHIC DIVISION

3085  
JAN 19 1971