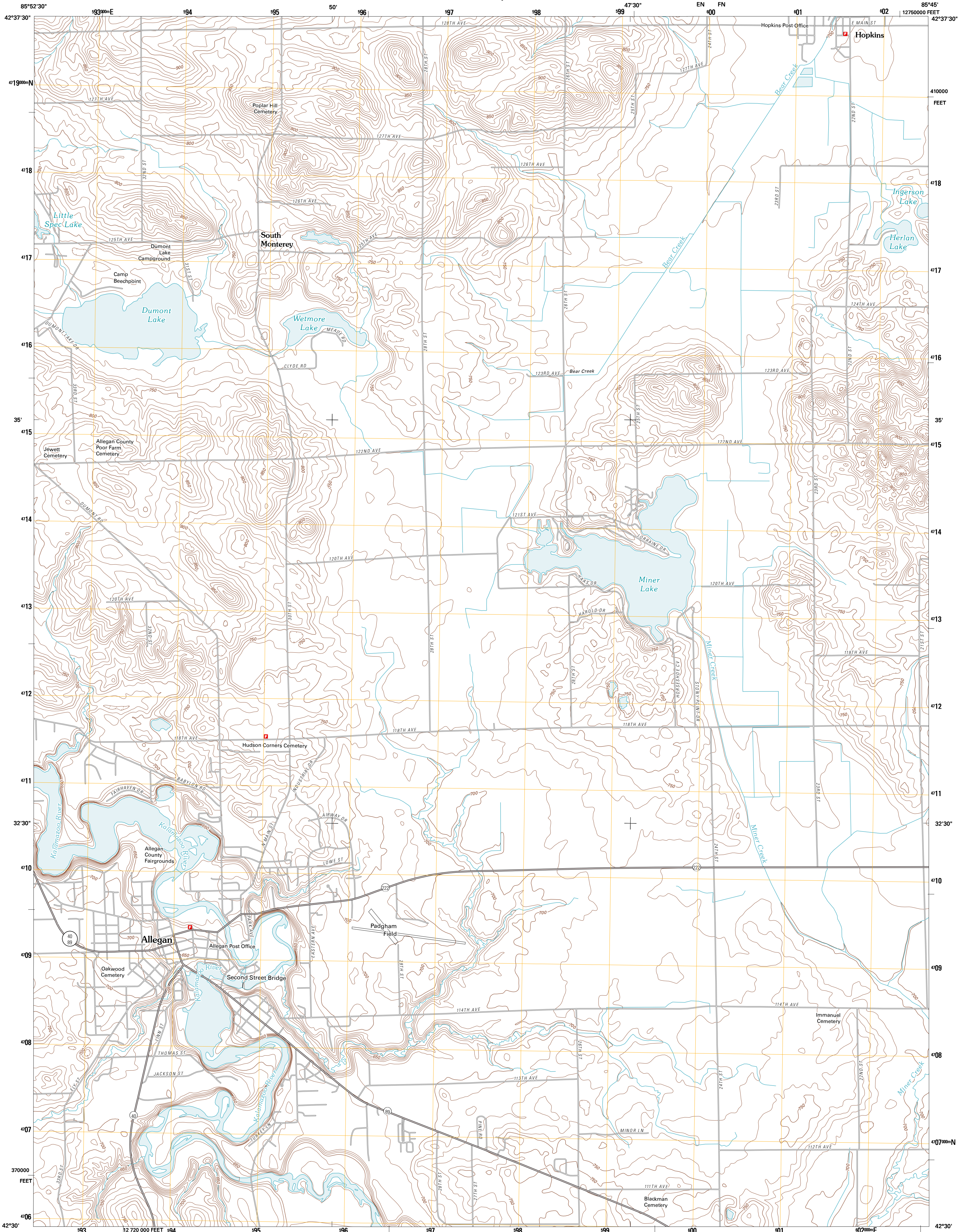




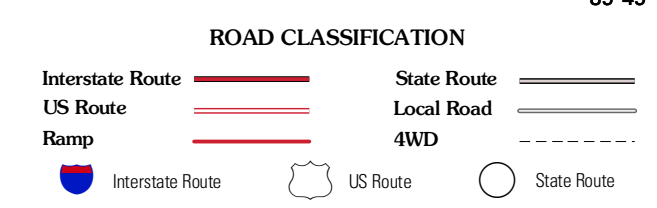
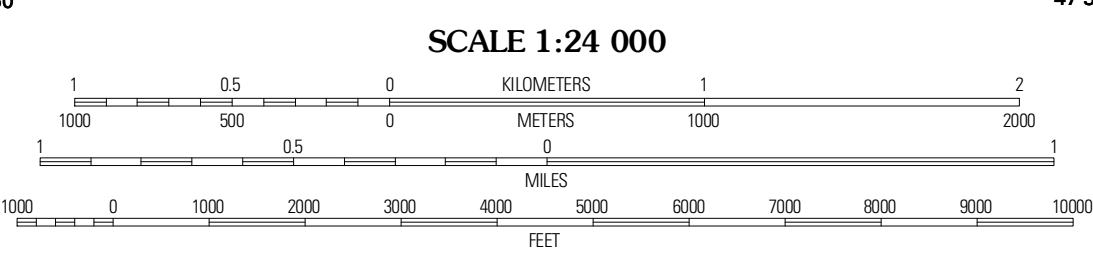
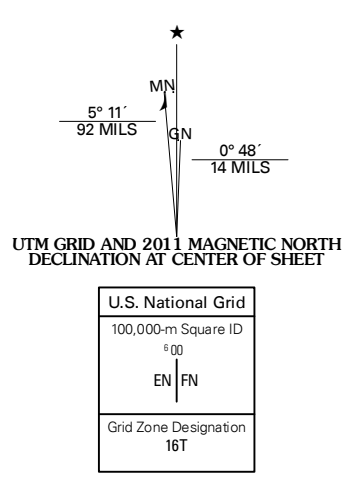
U.S. DEPARTMENT OF THE INTERIOR
U. S. GEOLOGICAL SURVEY



ALLEGAN QUADRANGLE
MICHIGAN-ALLEGAN CO.
7.5-MINUTE SERIES



Produced by the United States Geological Survey
North American Datum of 1983 (NAD83)
World Geodetic System of 1984 (WGS84). Projection and
1 000-meter grid: Universal Transverse Mercator, Zone 16T
10 000-foot ticks: Michigan Coordinate System of 1983
(south zone)



Imagery.....NAP, July 2009
Roads.....©2006-2010 Tele Atlas
Names.....©NSI, 2010
Hydrography.....National Hydrography Dataset, 2009
Contours.....National Elevation Dataset, 1999
Boundaries.....Census, IBWC, IBC, USGS, 1972 - 2010

CONTOUR INTERVAL 10 FEET
NORTH AMERICAN VERTICAL DATUM OF 1988

This map was produced to conform with version 0.5.10
of the USGS US Topo Product Standard.
A metadata file associated with this product is draft version 0.5.16

Hamletts East	Burrups	Wistland
Milgrove	Allegan	Martin
Bloomfield	Merson	Onsago

ADJOINING 7.5 QUADRANGLES

ALLEGAN, MI
2011