

AERIAL PHOTOGRAPHY PROJECT INDEX MAP
FOR MN DNR PHOTOS FLOWN AT 1: 31,680
THEN CROPPED AND RESIZED TO 1: 15,840

Washington
County

MINNESOTA

Printed Map Scale: 1 inch = 1 miles

Photo Scale: 1 : 15,840

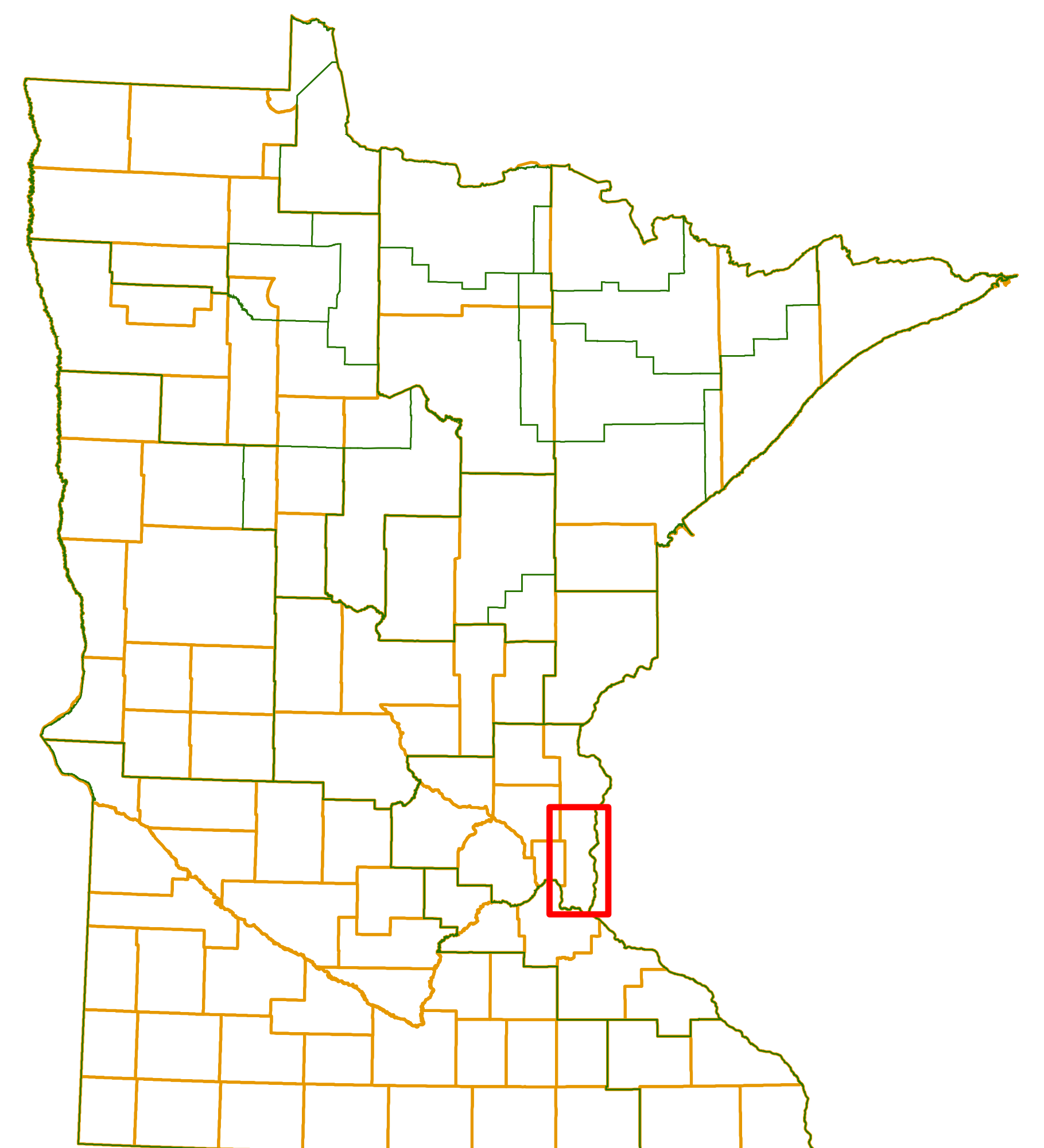
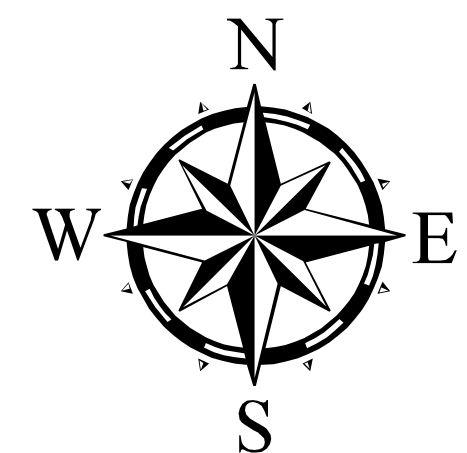
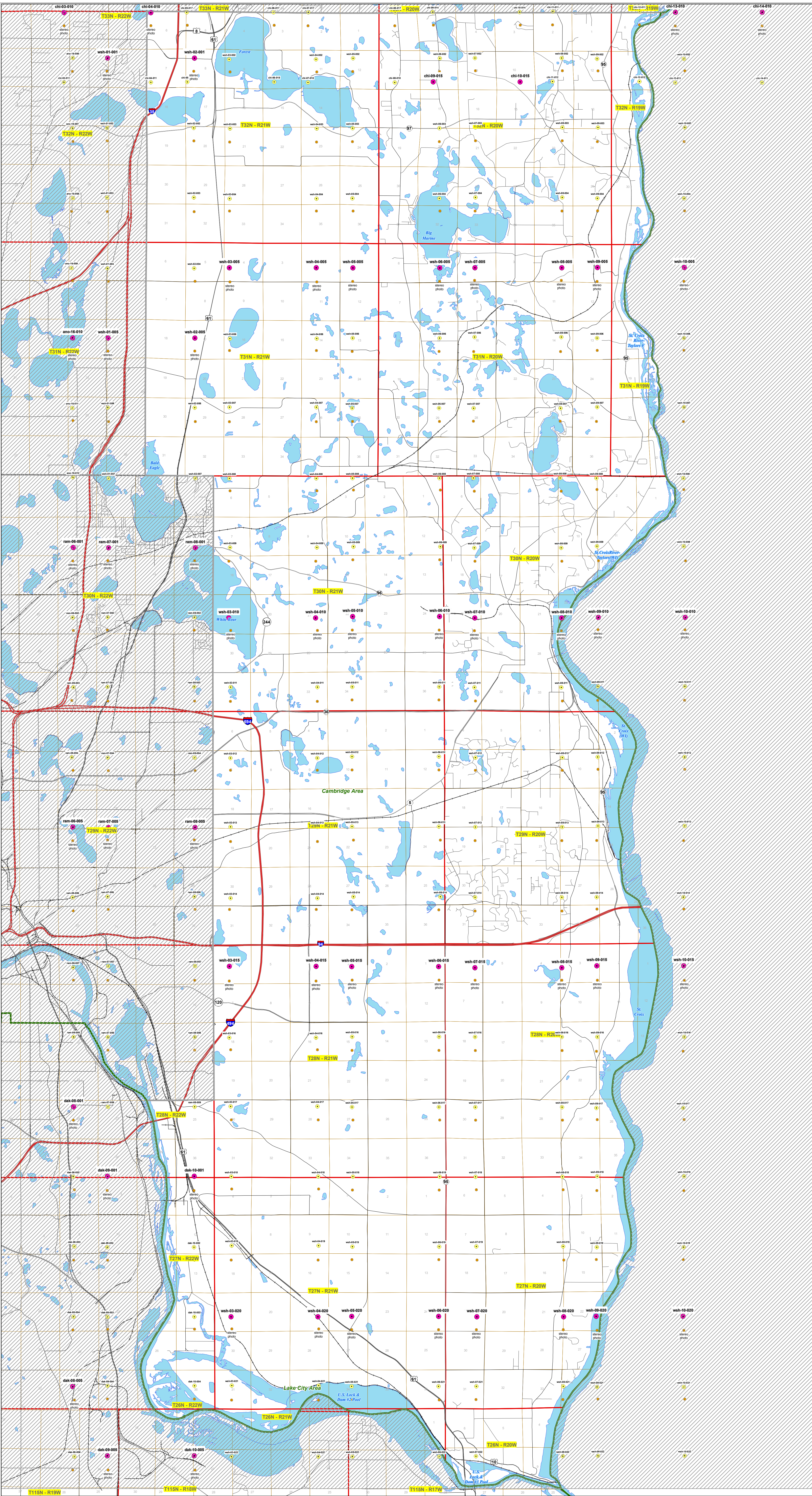
Flight Altitude 15,840' Above Terrain Datum

Contractor:
Williams Aerial Mapping

Dates Flown:
10/10 - 10/15/05

Photographs Flown for:

State of Minnesota
Department of Natural Resources
Division of Forestry



0 0.5 1 2 3 4
Miles