

**AERIAL PHOTOGRAPHY PROJECT INDEX MAP
FOR MN DNR PHOTOS FLOWN AT 1: 31,680
THEN CROPPED AND RESIZED TO 1: 15,840**

**Scott
County**

MINNESOTA

Printed Map Scale: 1 inch = 1.1 miles

Photo Scale: 1 : 15,840

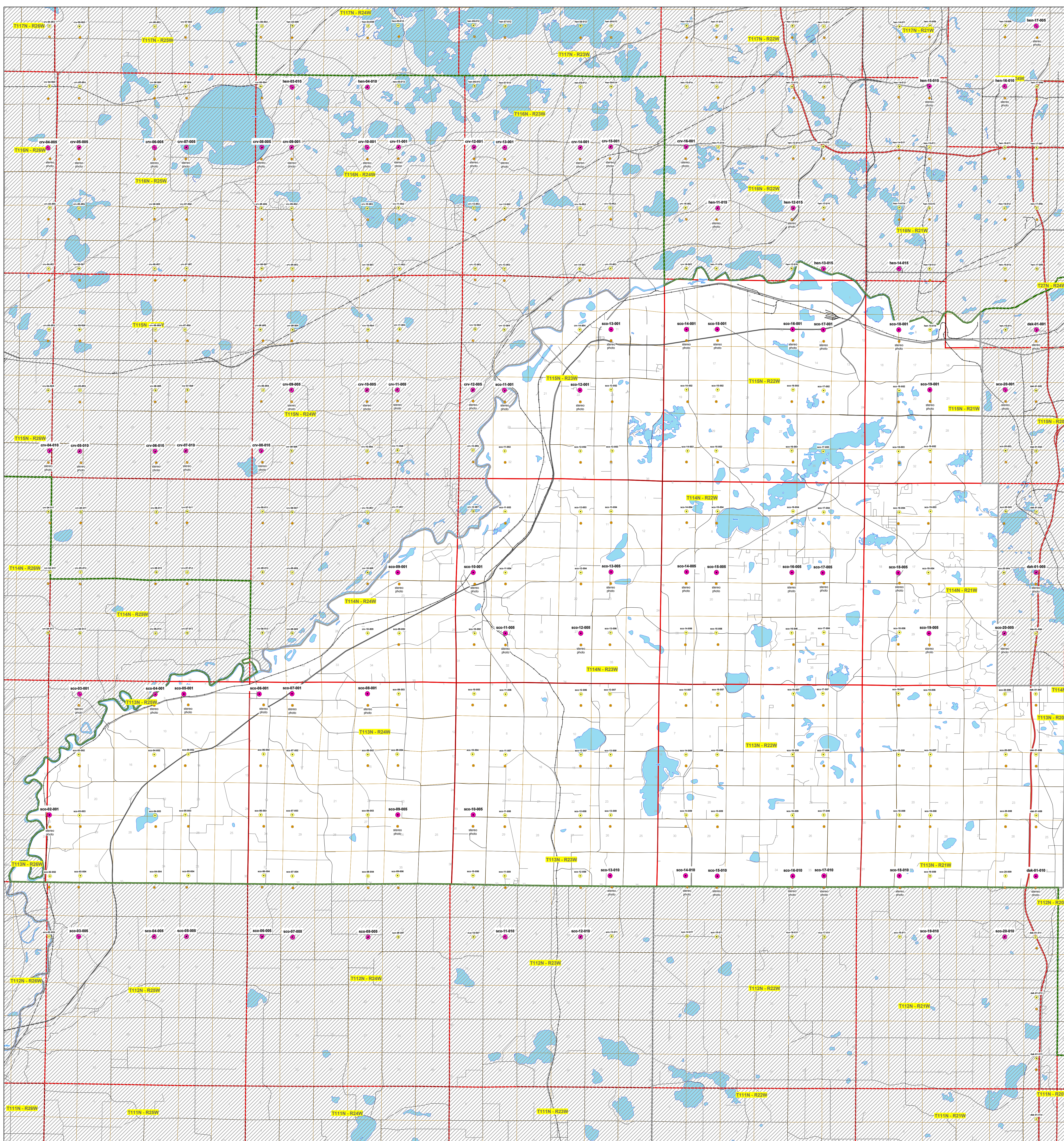
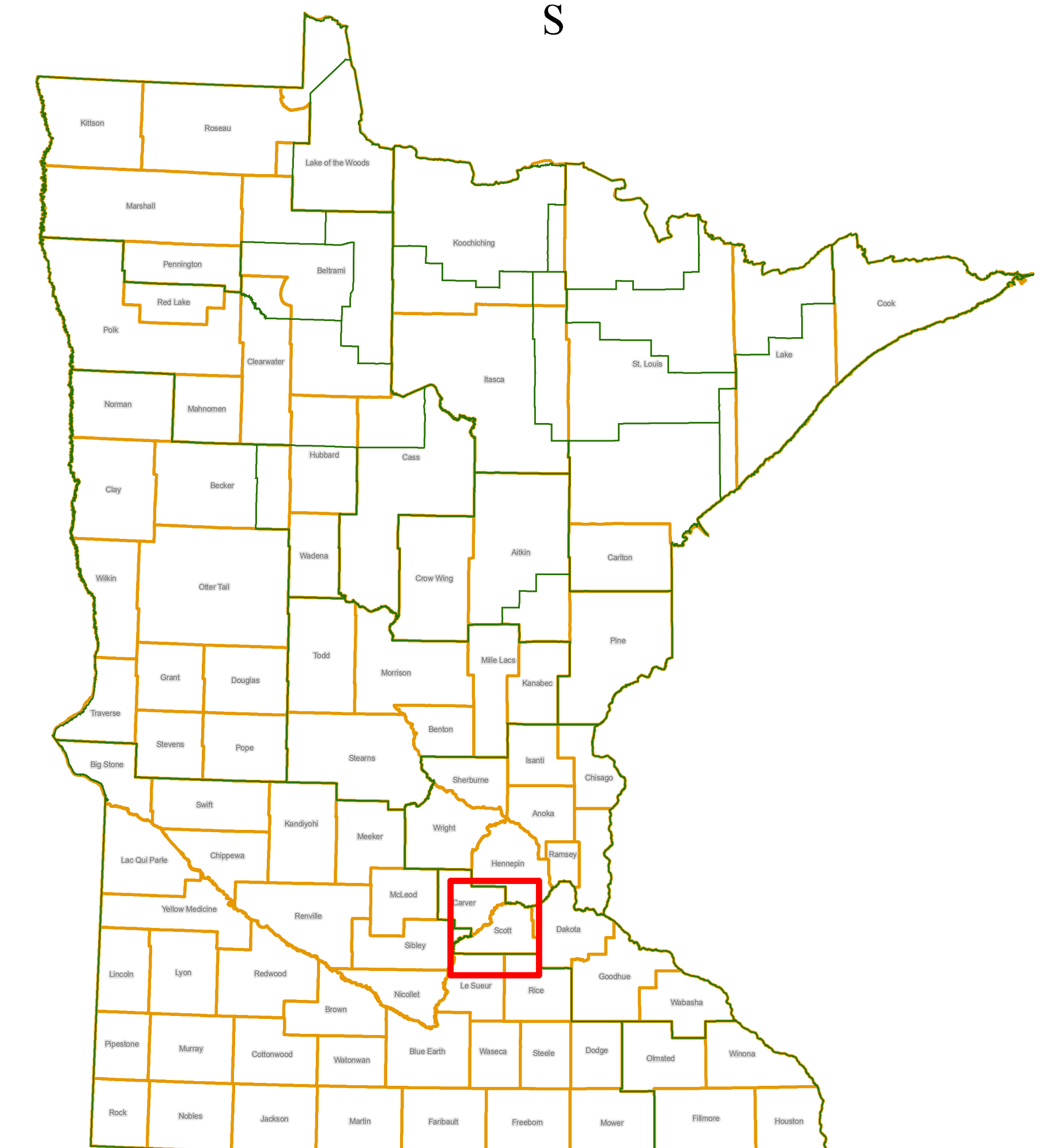
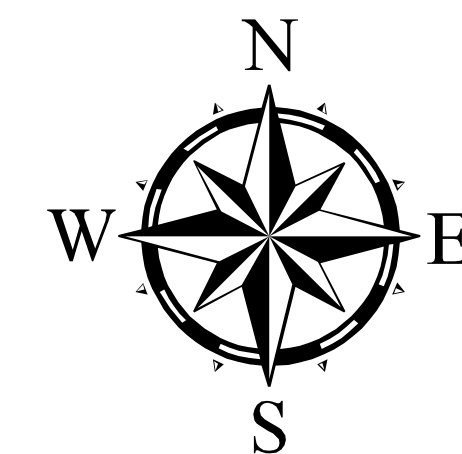
Flight Altitude 15,840' Above Terrain Datum

Contractor:
Williams Aerial Mapping

Dates Flown:
10/08 - 10/10/05

Photographs Flown for:

State of Minnesota
Department of Natural Resources
Division of Forestry



0 0.3 0.6 1.2 1.8 2.4
Miles